



DAMEN STAN PONTOON[®] 5213

"DYNAMO"

GENERAL

YARD NUMBER	523711
DELIVERY DATE	April 2016
TYPICAL APPLICATIONS	Deck Cargo, RoRo Cargo
TYPICAL AREA OF OPERATION	Deep sea, Coastal waters, Harbours, Inland waters
CLASSIFICATION	Bureau Veritas I +Hull, Pontoon, Unrestricted navigation, Inwatersurvey, Strengthbottom
FLAG	St. Vincent
OWNER	Damen Shiprepair Dunkerque

DIMENSIONS

LENGTH MOULDED	52,20 m
BEAM MOULDED	13,00 m
DEPTH MOULDED	3,00 m
DRAUGHT MAX	2,26 m
DEADWEIGHT	1160 ton

CAPACITIES

DECK LOAD	10 ton/m ²
VOID SPACES	12 pcs.: 1.885 m ³
DECK THICKNESS	12 mm heavy deck

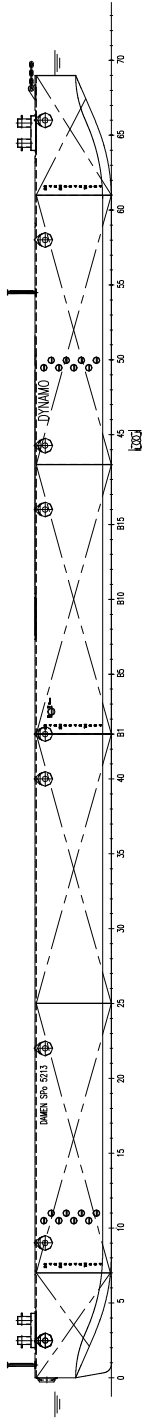
DESIGN CONDITIONS

SEA WATER TEMPERATURE	0° to +35° C
OUTSIDE AIR TEMPERATURE	-5° to +45° C

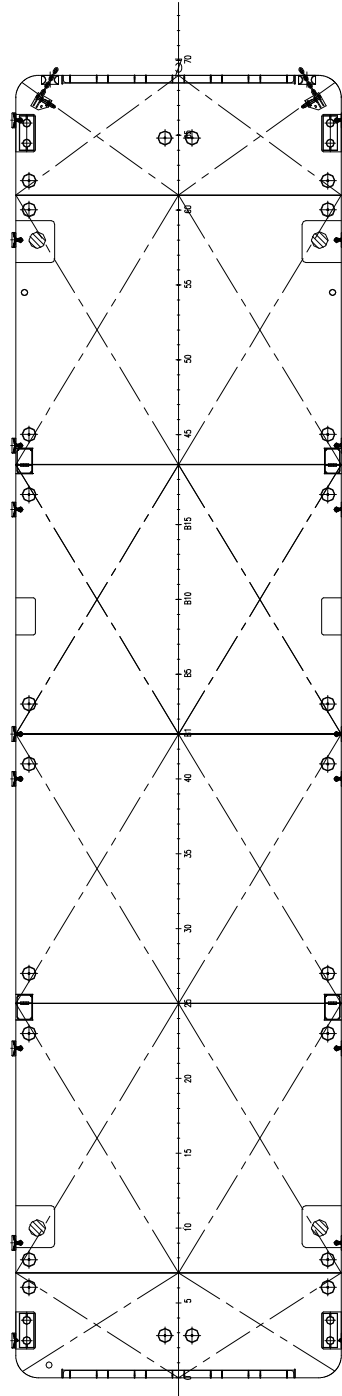
EXECUTION

TOWING BRACKETS	One on PS and one on SB at foredeck
BOLLARDS	4 pcs.
DRAUGHT MARKS	At fore mid and aft on PS and SB every 20 cm
BOARDING LADDERS	2 on SB and 2 on PS in recesses of the hull
CATHODIC PROTECTION	Zinc anodes on underwater part of the hull
MANHOLES	Flush bolted round type manholes
EMERGENCY TOWING PIN	Flush mounted towing pin in the bow.
RAMP RECESS	RoRo ramp recess at bow (6 x 1.5m) and stern (6 x 1.5m)
SPUD POLE FOUNDATIONS	Four spud pole foundations in the hull covered with steel plate
LIFTING EYES	Four lifting eyes flush with main deck and covered with bolted steel plates
FENDERING	18 Tyre fenders 600 mm
MASTS	3 Light stands for navigation lights (not included)

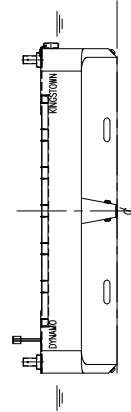
SIDE VIEW



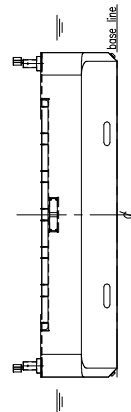
TOP VIEW



AFT VIEW



FRONT VIEW



DAMEN STAN PONTOON® 5213

"DYNAMO"

DAMEN

DAMEN SHIPYARDS GORINCHEM

Member of the DAMEN SHIPYARDS GROUP



Industrieterrein Avelingen West 20
4202 MS Gorinchem

P.O. Box 1
4200 AA Gorinchem
The Netherlands

phone +31 (0)183 63 99 11
fax +31 (0)183 63 21 89

info@damen.com
www.damen.com