



Small Scale LNG FSRU (Floating Storage Unit)

STANDARD

PICTURE OF SIMILAR VESSEL

GENERAL

Basic functions	Small scale stationary platform for STS (side-to-side) mooring to shore and to gas feeder / tanker. Storage, load / offload and treatment of liquefied gasses
Classification	Bureau Veritas I, ✕Hull, • Mach, IWS, Barge / Liquefied Gas Storage, Interval docking 20 years

DIMENSIONS

Length overall	85.50 m
Beam moulded	35.50 m
Depth moulded	9.00 m
Draft design	4.25 m
Deadweight	8,000 t

TANK CAPACITIES

Ballast water	3,500 m ³
Fuel oil (Solas - MGO)	5 m ³
Potable water	2 m ³
Sewage	2 m ³
Lubrication oil	1 m ³

LNG STORAGE TANKS

Volume	2 x 6,500 m ³ (geometric. fill)
Design Pressure	4.5 Bar
Material	9% Ni (as per Class)
Insulation (GRP covered)	300 mm PUR
BOR (Boil Off Rate)	appr. 0.25 % day

LOADING / OFF - LOADING

Loading	500 m ³ / hr
Off - Loading	500 m ³ / hr
Vapor	500 m ³ / hr
Hoses feeder - platform & platform - feeder, owners delivery	

MOORING SYSTEM

Shore side	Sliding guidance brackets for pillars (pillar design and delivery owner supply)
Ship side	4x Q.R.H.C. (Quick Release Hooks and integrated Capstan), each hook SWL 150 kN, pull capstan 80 kN
Fenders	4x Yokohama fenders

ELECTRICAL EQUIPMENT

Generator set(s)	1x 280 kWe (L)NG driven Main generator 1x 280 kWe (L)NG driven stand - by generator 1x 120 kWe MGO driven Solas - / emergency generator 1x 150 kWe
Shore supply	
CCTV system	Covering cargo load / offload operations

DECK LAY-OUT

Towing gear	4x Smit bracket SWL 1,000kN
Cranes	2x Electric-hydraulic hose handling - / maintenance cranes covering manifold(s) and tank dome(s), SWL 999kg @ 2.5 - 20m
Access	2x Gangway provided with fence / gate
Life saving	Life buoys and - jackets

SECONDARY SHIP SYSTEMS

Fuel system	BOG and evaporation system for LNG to NG for (L)NG driven generators
Compressor(s)	2x Working air
Separator(s)	1x Bilge water acc. Marpol
Pump(s)	2x Sprinkler / emerg. sprinkler 2x General Service / emerg. firefighting
Fire fighting	Dry powder system

ACCOMMODATION

Cargo office and day accommodation with change room and sanitary facilities for 6 persons with heating, ventilation and air-conditioning

NAUTICAL AND COMMUNICATION EQUIPMENT

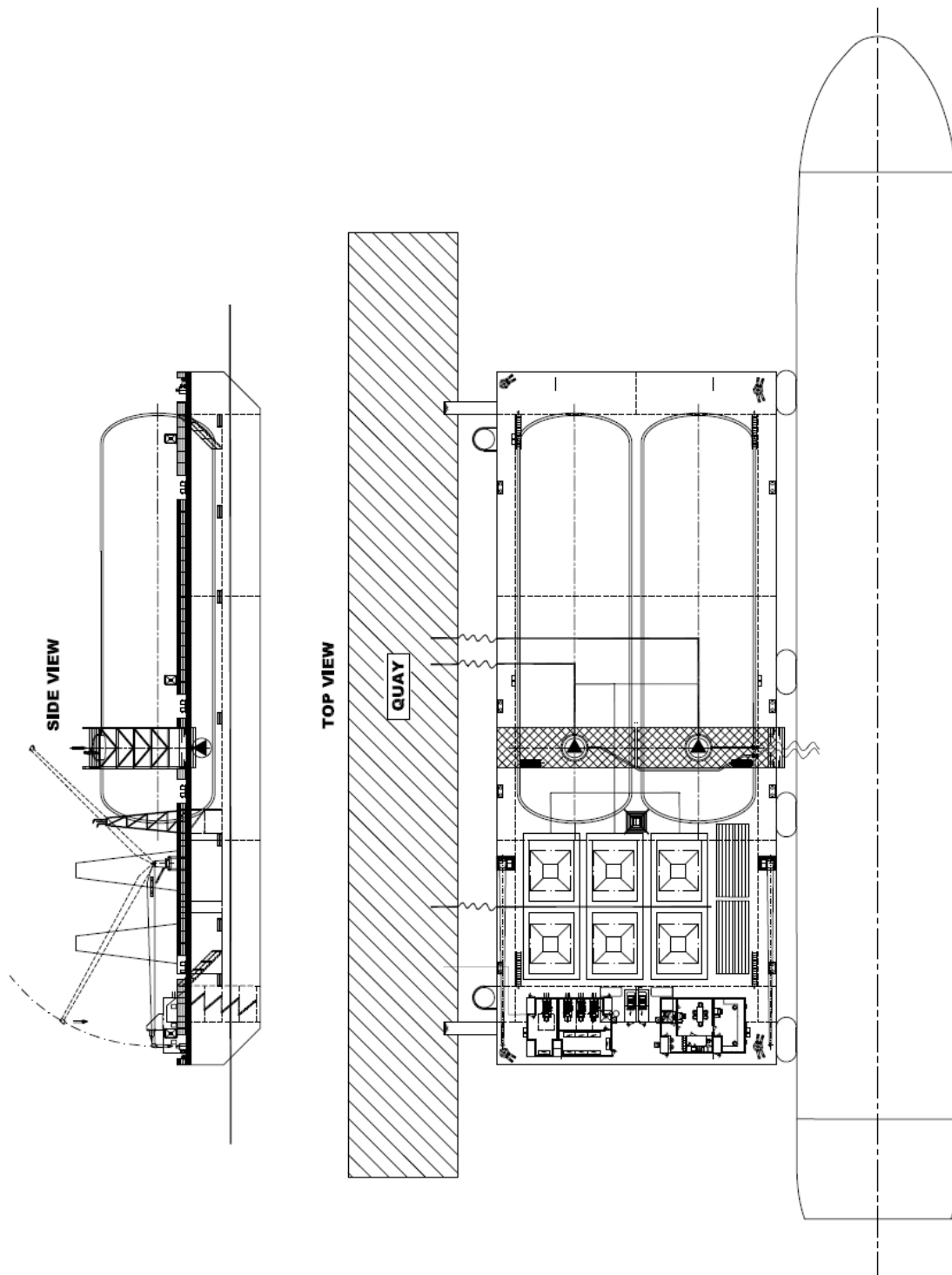
VHF radio telephone set	Communication platform - feeder
VHF 3x hand held	Communication on - board

SPECIAL EQUIPMENT - OPTIONS

LEG or LPG (note LEG - LPG; gas driven gen.sets replaced by MGO driven gen.sets)
FSO (Floating Storage Offloading)
FSRU (Floating Storage Re-gasification Unit)
Increase storage volume (by lengthening tanks and barge)
Semi - permanent mooring open see (anchors and winches)
Tandem mooring
Day / night accommodation module including facilities
Boat Landing
Re-liquefaction
Bunker platform (i.c.w. custody transfer system)
Self-propulsion

Small Scale LNG FSU (Floating Storage Unit)

STANDARD



DAMEN

DAMEN SHIPYARDS GROUP

Avelingen-West 20
4202 MS Gorinchem
The Netherlands

P.O. Box 1
4200 AA Gorinchem
The Netherlands

phone +31 (0)183 63 99 22
fax +31 (0)183 63 21 89

info@damen.com
www.damen.com

© No part of the leaflet may be reproduced in any form, by print, photo print, microfilm, or any other means, without written permission from Damen Shipyards Group