

HOPPER BARGE RANGE B13

"UNRESTRICTED NAVIGATION"

GENERAL

Typical applications	Dry cargo in hold.
Typical area of operation	Coastal waters, Harbours and Inland waters.
Classification	Lloyd's Register #100 AT, Barge, *IWS, Strengthened for Loading and Unloading bottom aground.
Flag	St. Vincent and the Grenadines.

DIMENSIONS

	HoBa 4813	HoBa 6013	HoBa 7113	
Length moulded	47,60	59,50	71,40	m
Beam moulded	13,00	13,00	13,00	m
Depth moulded	4,00	4,00	4,00	m
Draught max.	3,28	3,20	3,06	m
Deadweight max.	1515	1870	2140	ton
Volume Cargo Hold	1856	2506	3156	m ³

DESIGN CONDITIONS

Sea water temperature	0 to + 35 °C
Outside air temperature	-5 to + 45 °C

STANDARD EXECUTION

Towing brackets	One on PS and one on SB at foredeck
Double bollards	4 pcs. standard, insert plates at every section
Mooring lines	2 pcs. polypropylene mooring lines
Draught marks	At fore, mid and aft on PS and SB every 20 cm
Boarding ladders	2 on PS and 2 on SB in recesses of the hull
Hopper ladders	One on the fore and one on the aft of the hopper
Cathodic protection	Anodes on underwater part of the hull
Manholes	Flush bolted manholes
Emergency towing	Flush mounted towing connection in the bow
Lifting eyes	Four lifting eyes to lift the empty barge
Anti-slip	Anti-slip painting all around at sides, rear and peak
Cargo hold thickness	Class requirement plus extra wear&tear
Mast	Mast and Light stands

OPTIONAL EQUIPMENT

Fendering	Tyre fenders and/or Half round steel fender pipe
Navigation lights	Solar powered navigation lights
Anti-Fouling	Anti-fouling paint system
Railing	Railing along the barge side
Anchor/ Mooring system	Anchor/ mooring/ coupling winches equipped with warping head, mooring lines, anchors and steel cables.
Coupling bollards	Coupling bollards for convoy and pusher configuration
Hatch covers	Manual operated aluminum cargo covers
Hopper shaped cargo hold	Hopper shaped cargo hold

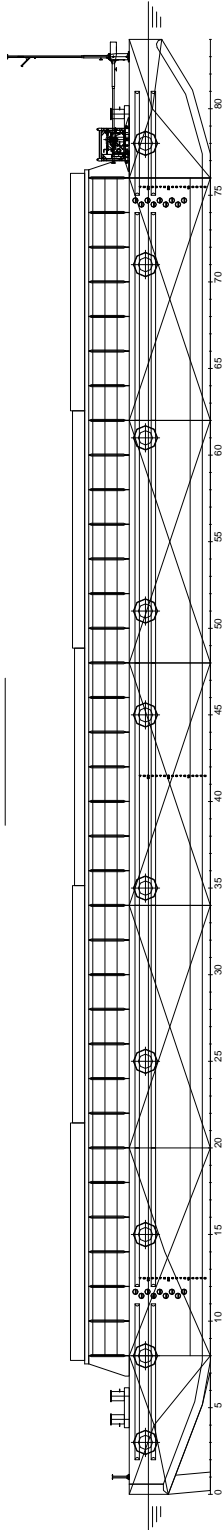
* Mentioned deadweight and volumes are calculated with standard hopper shape

* Picture shows an Artist Impression with optional equipment, for reference only

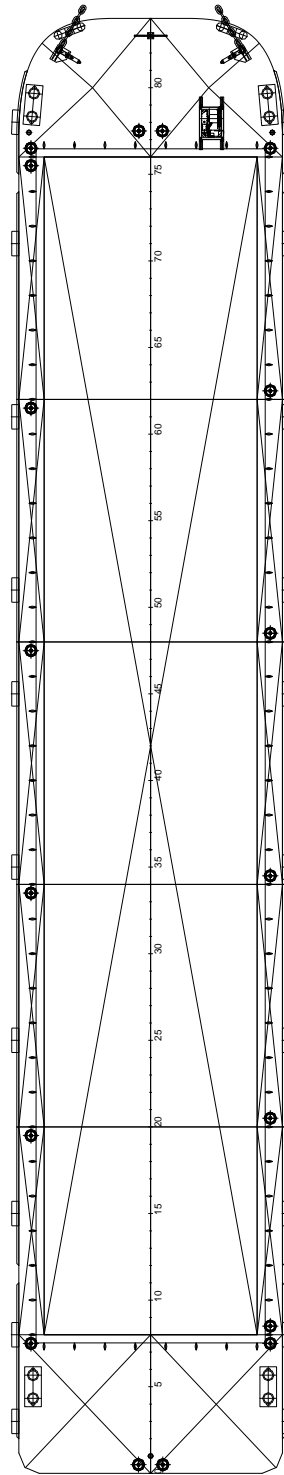
HOPPER BARGE RANGE B13

“UNRESTRICTED NAVIGATION”

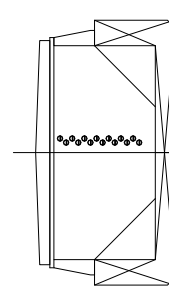
SIDE VIEW



TOP VIEW



CROSS SECTION



DAMEN

DAMEN SHIPYARDS GROUP

Avelingen-West 20
4202 MS Gorinchem
The Netherlands

P.O. Box 1
4200 AA Gorinchem
The Netherlands

phone +31 (0)183 63 99 22
fax +31 (0)183 63 21 89

info@damen.com
www.damen.com