

# HOPPER BARGE RANGE B11

"INLAND"

## GENERAL

Typical applications	Dry cargo in hold.
Typical area of operation	Inland water and Coastal area's.
Classification	Lloyd's Register * AT I.W.W.
	Bulk Carrier Barge
Flag	St. Vincent and the Grenadines.

## DIMENSIONS

	<u>HoBa 4611</u>	<u>HoBa 5811</u>	<u>HoBa 6911</u>	
Length moulded	46,00	57,50	69,00	m
Beam moulded	11,40	11,40	11,40	m
Depth moulded	3,00	3,00	3,00	m
Draught max.	2,65	2,65	2,65	m
Deadweight max.	1065	1355	1645	ton
Volume Cargo Hold	1378	1782	2187	m <sup>3</sup>

## DESIGN CONDITIONS

Sea water temperature	0 to + 35 °C
Outside air temperature	-5 to + 45 °C

## STANDARD EXECUTION

Towing brackets	One on PS and one on SB at foredeck
Double bollards	4 pcs. standard, insert plates at every section
Mooring lines	2 pcs. polypropylene mooring lines
Draught marks	At fore, mid and aft on PS and SB every 20 cm
Boarding ladders	2 on PS and 2 on SB in recesses of the hull
Hopper ladders	One on the fore and one on the aft of the hopper
Cathodic protection	Anodes on underwater part of the hull
Manholes	Flush bolted manholes
Emergency towing	Flush mounted towing connection in the bow
Lifting eyes	Four lifting eyes to lift the empty barge
Anti-slip	Anti-slip painting all around at sides, rear and peak
Cargo hold thickness	Class requirement plus extra wear&tear
Mast	Mast and Light stands

## OPTIONAL EQUIPMENT

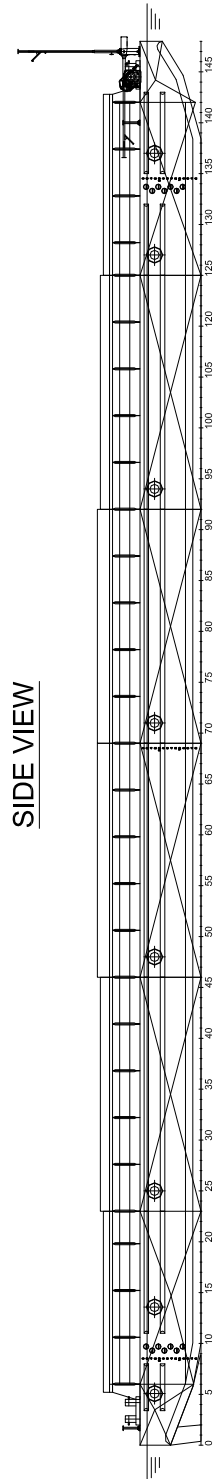
Fendering	Tyre fenders and/or Half round steel fender pipe
Navigation lights	Solar powered navigation lights
Anti-Fouling	Anti-fouling paint system
Railing	Railing along the barge side
Anchor/ Mooring system	Anchor/ mooring/ coupling winches equipped with warping head, mooring lines, anchors and steel cables.
Coupling bollards	Coupling bollards for convoy and pusher configuration
Coupling system	Manual operated coupling winches
Hatch covers	Manual operated aluminum cargo covers
Hopper shaped cargo hold	Hopper shaped cargo hold

\* Mentioned deadweight and volumes are calculated with standard hopper shape

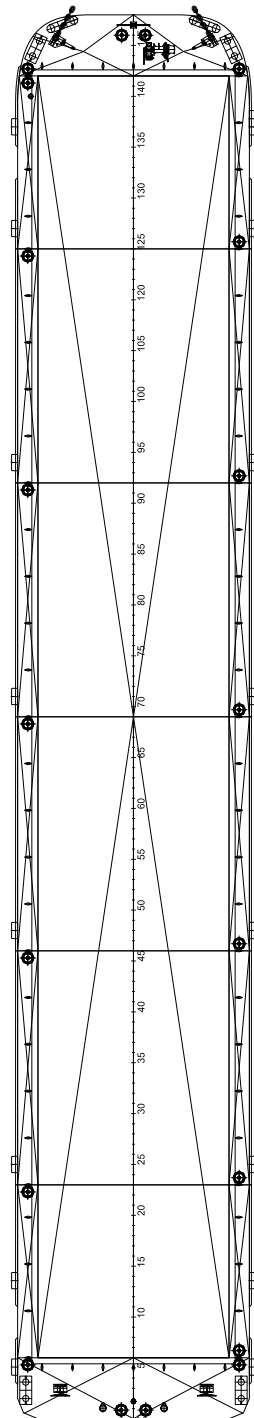
\* Picture shows an Artist Impression with optional equipment, for reference only

# HOPPER BARGE RANGE B11

“INLAND”

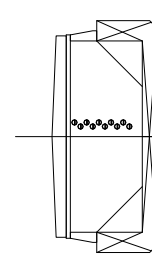


SIDE VIEW



TOP VIEW

CROSS SECTION



DAMEN SHIPYARDS GROUP

Avelingen-West 20  
4202 MS Gorinchem  
The Netherlands

P.O. Box 1  
4200 AA Gorinchem  
The Netherlands

phone +31 (0)183 63 99 22  
fax +31 (0)183 63 21 89

info@damen.com  
[www.damen.com](http://www.damen.com)