

DAMEN BUNKER BARGE 6316 - INLAND

GENERAL

Typical applications	Transport of liquid cargoes
Typical area of operation	Harbours, Inland waters
Classification	Lloyd's Register *100AT I.W.W. Barge, Type N Open, Double hull, S.G. 1.025, LS™, Zone 2, Carriage of oils with a F.P. exceeding 60°C

DIMENSIONS

Length mld.	63,00	m
Beam mld.	16,50	m
Depth mld.	3,00	m
Draught max.	2,00	m
Deadweight max.	1500	tons

CAPACITIES

Ballast tank volume	828	m3
Cargo volume (97%)	1515	m3

DESIGN CONDITIONS

Sea water temperature	0° to +35° C
Outside air temperature	-5° to +45° C

STANDARD EXECUTION

Manifold	Maximum loading / unloading capacity 2x 250 m3/h
Drip trays	Underneath cargo shore connections
Valves	Manual operated on deck
Ventilation	De-aerators with flame arrestors
Sounding	By opening of the manholes
Alarm	High and low level alarm
Flow meters	2x 3-beam inline ultrasonic flowmeter

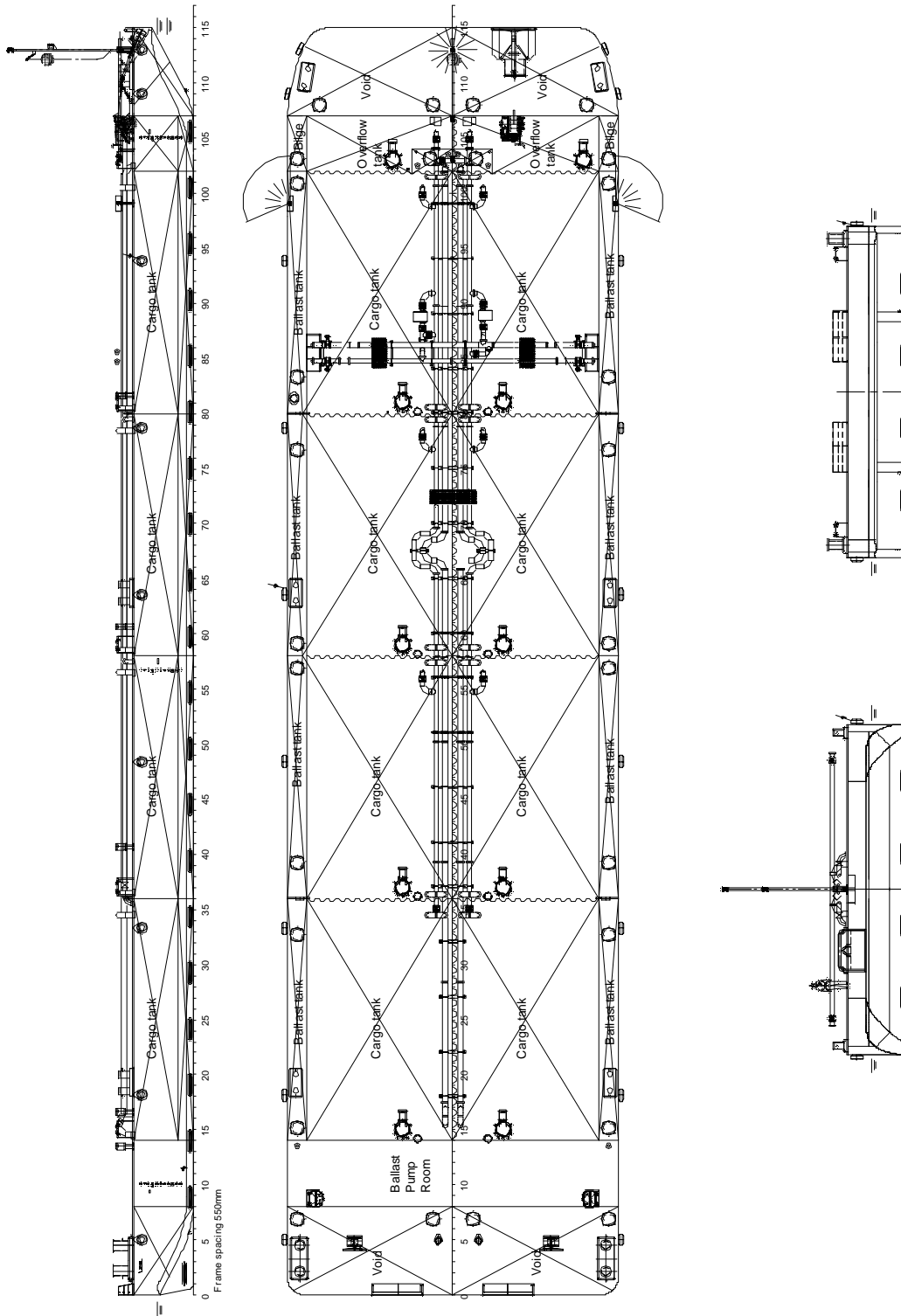
DECK EQUIPMENT

Push frame	Reinforcement at the stern to absorb forces of the pusher
Towing brackets	One on PS and one on SB at foredeck
Bollards	6 double bollards and 4 cap bollards
Mooring	Three mooring ropes
Draught marks	At fore, mid and aft on PS and SB every 20 cm
Cathodic protection	Anodes underwater part of the hull
Manholes	Flush bolted manholes
Anchor winch	One electrical driven anchor winch at the bow
Anchor	One anchor and steel wire in a recess at the bow
Navigation lighting	Navigation lights for inland navigation

OPTIONAL EQUIPMENT

Cargo pumps	2x 250 m3/h @ 2,5 bar
Coupling	2x coupling winches at the stern
Fendering	Tyre fender system

DAMEN BUNKER BARGE 6316 - INLAND



DAMEN SHIPYARDS GROUP

Avelingen-West 20
4202 MS Gorinchem
The Netherlands

P.O. Box 1
4200 AA Gorinchem
The Netherlands

phone +31 (0)183 63 99 22
fax +31 (0)183 63 21 89

info@damen.com
www.damen.com