

DAMEN BUNKER BARGE B20 RANGE

GENERAL

Typical applications	Liquid bulk cargo, fuel oil
Typical area of operation	Coastal waters, Harbours, Inland waters
Classification	Lloyd's Register +100AT Barge, IWS Carriage of oils with a F.P. exceeding 60°C

DIMENSIONS

	BuBa	BuBa	BuBa	BuBa	
	8320	9320	10320	11220	
Length mld.	82,84	92,72	102,60	112,48	m
Beam mld.	20,00	20,00	20,00	20,00	m
Depth mld.	5,60	5,60	5,60	5,60	m
Draught max.	4,20	4,20	4,20	4,20	m
Deadweight max.	4750	5475	6210	6960	tons

CAPACITIES

Tanks	7	8	9	10	
Cargo volume (97%)	4855	5560	6260	6965	m3

DESIGN CONDITIONS

Sea water temperature	0° to +35° C
Outside air temperature	-5° to +45° C

STANDARD EXECUTION

De-aeration	De-aeration of cargo tanks to overflow tank and de-aeration cap with ball valves and flame arrestor on overflow tank One on PS and one on SB, at fore deck At the foreside of the towing brackets 1 pc. flush mounted in the bow Double bollards for mooring and/or coupling At fore, mid and aft on PS and SB every 20 cm 2 on SB and 2 on PS built into the hull Anodes on underwater part of the hull Flush bolted manholes
Towing brackets	
Fair leads	
Emergency towing pin	
Bollards	
Draught marks	
Boarding ladders	
Cathodic protection	
Manholes	
Anti-slip	Anti-slip painting on walkways at sides, bow and stern
Cargo system	Manifold, valves, pressure gauges, screens high-level alarm and flowmeters With counter weight for easy opening For both 10 and 20 ft containers to be used for optional containerized equipment e.g. fuel blender, stores etc. Located in the aft void space connected to drip trays at the cargo manifold
Hatches	
Container fittings	
Bilge tank	
Bilge pump	Electrically driven 10 m3/h capacity

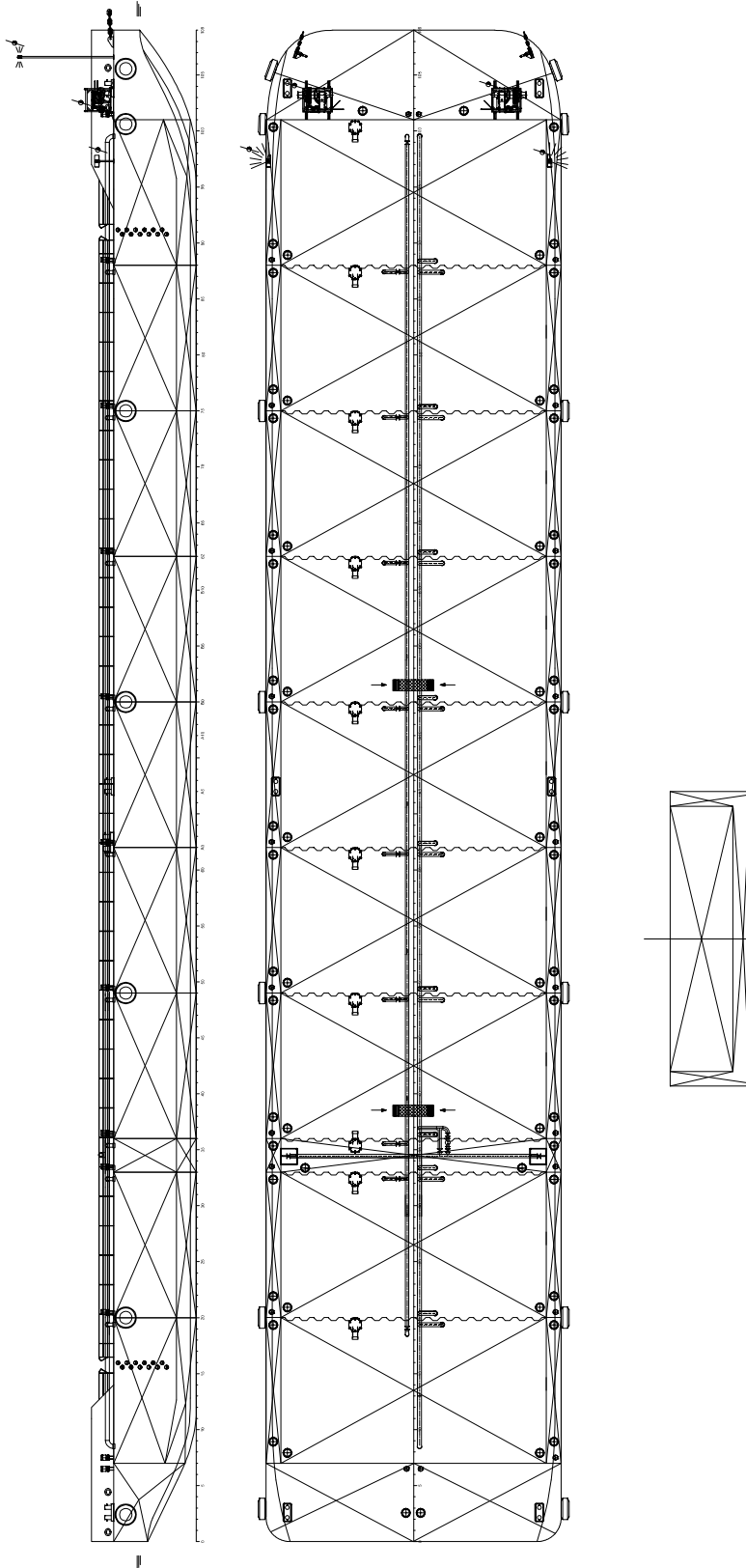
OPTIONAL EQUIPMENT

Cargo pumps	300 m3/h capacity
Generator set	CAT C4.4 generator set
Accommodation	Day accommodation including pantry and sanitary space
Winches	Anchor / Mooring / Coupling winches
Anchor	Anchor and wire
Fendering	Tyre fenders around the perimeter of the barge
Towing bridle	Towing bridle
Navigation lighting	Navigation lights
Anti-fouling	Anti-fouling paint system
Crane	Hose handling crane

* Mentioned deadweights are estimated and excl. optional equipment

** Image shown with optional equipment

DAMEN BUNKER BARGE B20 RANGE



DAMEN

DAMEN SHIPYARDS GROUP

Avelingen-West 20
4202 MS Gorinchem
The Netherlands

P.O. Box 1
4200 AA Gorinchem
The Netherlands

phone +31 (0)183 63 99 22
fax +31 (0)183 63 21 89

info@damen.com
www.damen.com