

DAMEN BUNKER BARGE B13 RANGE

GENERAL

Typical applications	Liquid bulk cargo, fuel oil
Typical area of operation	Harbours, Inland waters
Classification	Lloyd's Register *100AT I.W.W. Barge, Type N Open, Double hull, S.G. 1.025, LS™, Zone 2, Carriage of oils with a F.P. exceeding 60°C,

DIMENSIONS

	BuBa 5113	BuBa 6113	BuBa 7113	BuBa 8113	
Length mld.	51,00	61,00	71,00	81,00	m
Beam mld.	13,00	13,00	13,00	13,00	m
Depth mld.	3,00	3,00	3,00	3,00	m
Draught max.	2,05	2,10	2,15	2,18	m
Deadweight max.	905	1140	1395	1630	tons

CAPACITIES

Tanks	4	5	6	7	
Cargo volume (97%)	1000	1250	1500	1750	m3

DESIGN CONDITIONS

Sea water temperature	0° to +35° C
Outside air temperature	-5° to +45° C

STANDARD EXECUTION

De-aeration	De-aeration of cargo tanks to overflow tank and de-aeration cap with ball valves and flame arrestor on overflow tank
Bollards	Double bollards for mooring and/or coupling
Draught marks	At fore, mid and aft on PS and SB every 20 cm
Boarding ladders	2 on SB and 2 on PS built into the hull
Cathodic protection	Anodes on underwater part of the hull
Cargo system	Manifold, valves, pressure gauges, screens high-level alarm and flowmeters
Hatches	With counter weight for easy opening
Container fittings	For both 10 and 20 ft containers to be used for optional containerized equipment e.g. fuel blender, stores etc.
Bilge tank	Located in the aft void space connected to drip trays at the cargo manifold
Bilge pump	Electrically driven 10 m3/h capacity
Navigation lighting	Navigation lights

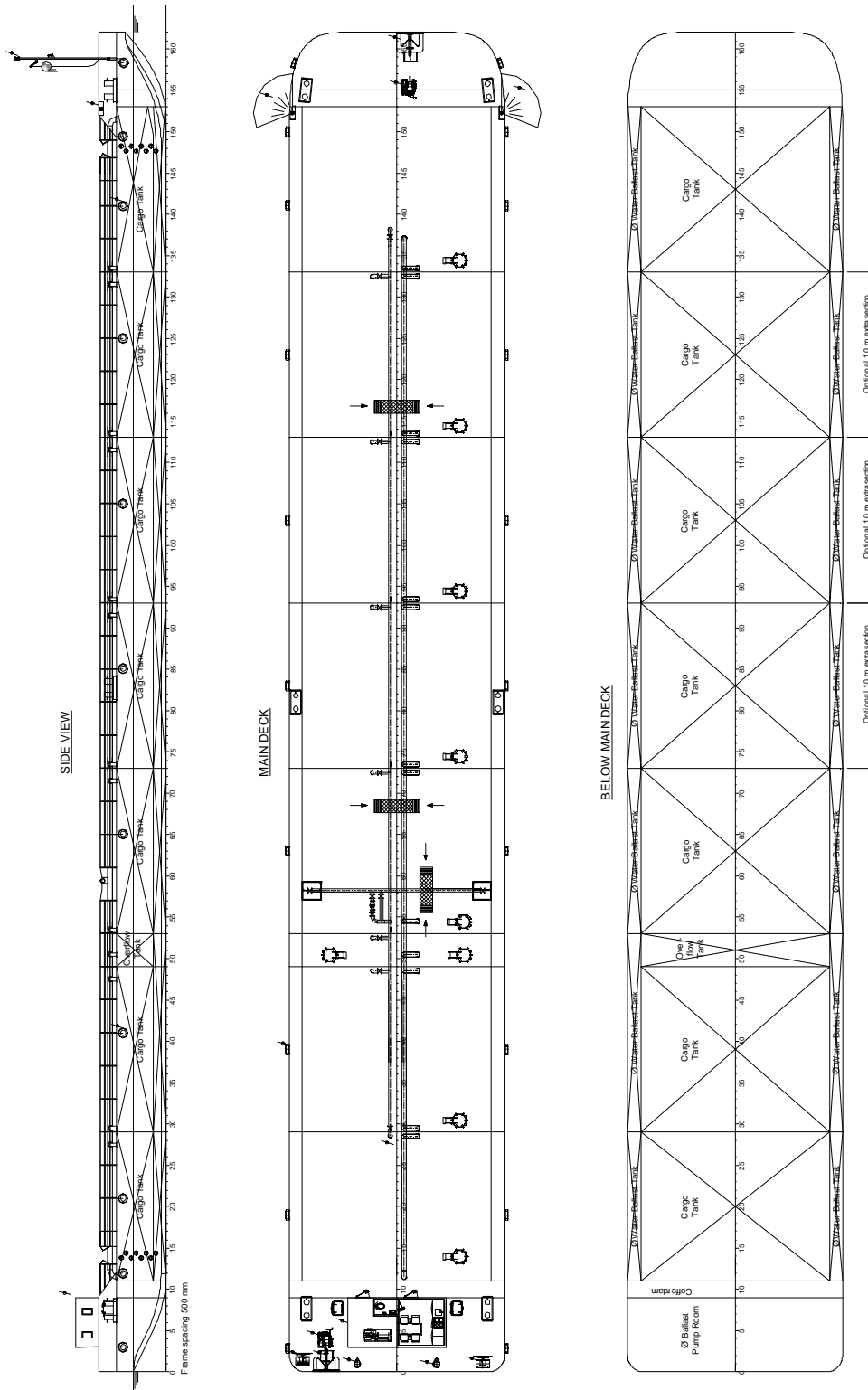
OPTIONAL EQUIPMENT

Cargo pumps	100 m3/h capacity
Generator set	CAT C4.4 generator set
Accommodation	Day accommodation including pantry and sanitary space
Winches	Anchor / Mooring / Coupling winches
Anchor	Anchor and wire
Fendering	Tyre fenders around the perimeter of the barge
Anti-fouling	Anti-fouling paint system
Crane	Hose handling crane

* Mentioned deadweights are estimated and excl. optional equipment.

** Image shown with optional equipment.

DAMEN BUNKER BARGE B13 RANGE



DAMEN SHIPYARDS GROUP

Avelingen-West 20
4202 MS Gorinchem
The Netherlands

P.O. Box 1
4200 AA Gorinchem
The Netherlands

phone +31 (0)183 63 99 22
fax +31 (0)183 63 21 89

info@damen.com
www.damen.com