

# DAMEN BUNKER BARGE B11 RANGE

## GENERAL

Typical applications Liquid bulk cargo, fuel oil  
 Typical area of operation Harbours, Inland waters  
 Classification Lloyd's Register \*100AT I.W.W. Barge, Type N Open, Double hull, S.G. 1.025, LS™, Zone 2, Carriage of oils with a F.P. exceeding 60°C

## DIMENSIONS

	BuBa 4211	BuBa 5211	BuBa 6211	
Length mld.	41,50	51,50	61,50	m
Beam mld.	11,40	11,40	11,40	m
Depth mld.	3,00	3,00	3,00	m
Draught max.	1,90	1,90	1,90	m
Deadweight max.	600	800	1000	tons

## CAPACITIES

	3	4	5	
Tanks				
Cargo volume (97%)	630	840	1050	m3

## DESIGN CONDITIONS

Sea water temperature	0° to +35° C
Outside air temperature	-5° to +45° C

## STANDARD EXECUTION

De-aeration De-aeration of cargo tanks to overflow tank and de-aeration cap with ball valves and flame arrestor on overflow tank  
 Fair leads At the foreside of the towing brackets  
 Bollards Double bollards for mooring and/or coupling  
 Draught marks At fore, mid and aft on PS and SB every 20 cm  
 Boarding ladders 2 on SB and 2 on PS built into the hull  
 Cathodic protection Anodes on underwater part of the hull  
 Cargo system Manifold, valves, pressure gauges, screens high-level alarm and flowmeters  
 Hatches With counter weight for easy opening  
 Container fittings For both 10 and 20 ft containers to be used for optional containerized equipment e.g. fuel blender, stores etc.  
 Bilge tank Located in the aft void space connected to drip trays at the cargo manifold  
 Bilge pump Electrically driven 10 m3/h capacity  
 Navigation lighting Navigation lights

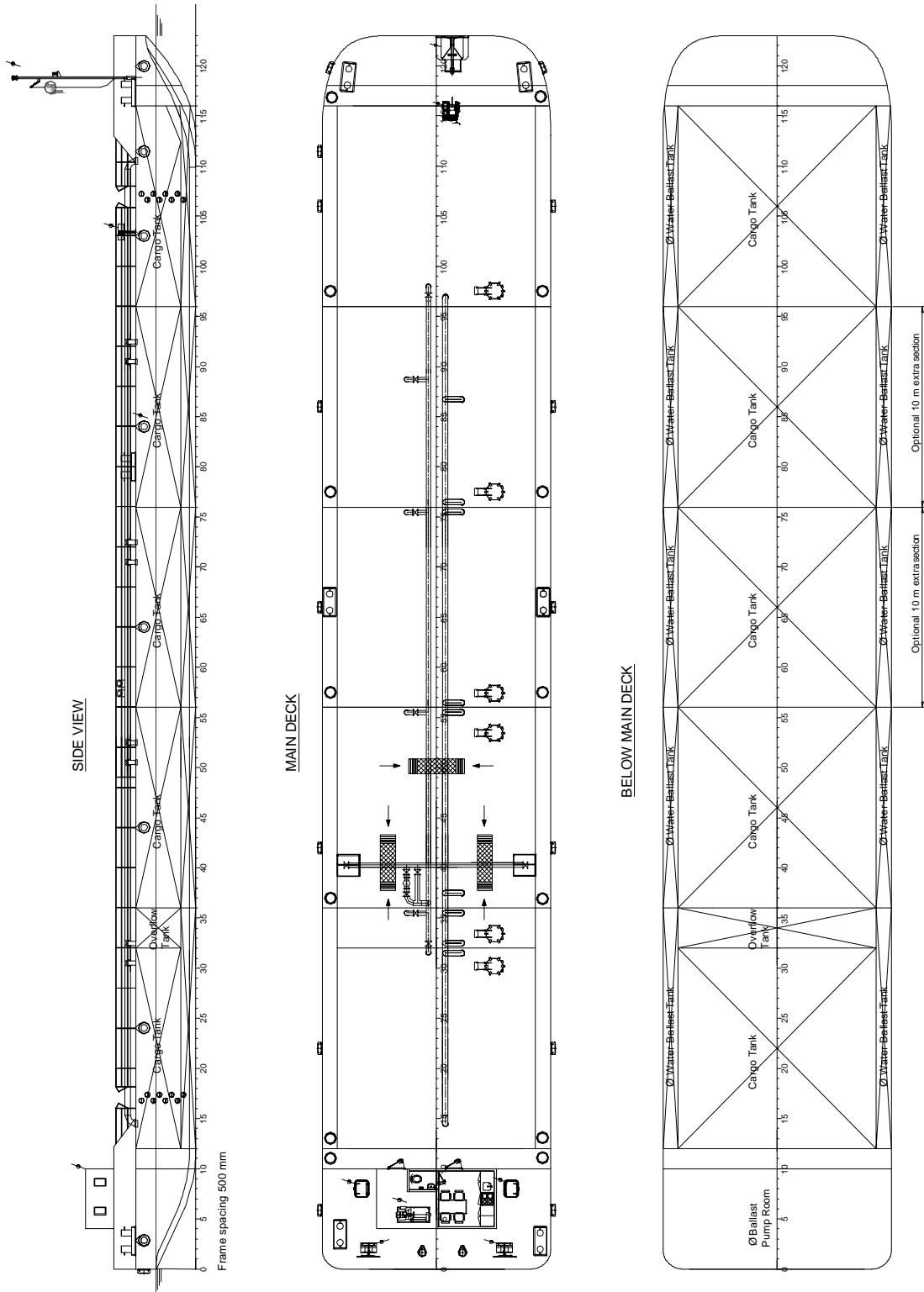
## OPTIONAL EQUIPMENT

Cargo pumps 100 m3/h capacity  
 Generator set CAT C4.4 generator set  
 Accommodation Day accommodation including pantry and sanitary space  
 Winches Anchor / Mooring / Coupling winches  
 Anchor Anchor and wire  
 Fendering Tyre fenders around the perimeter of the barge  
 Anti-fouling Anti-fouling paint system  
 Crane Hose handling crane

\* Mentioned deadweights are estimated and excl. optional equipment.

\*\* Image shown with optional equipment.

# DAMEN BUNKER BARGE B11 RANGE



DAMEN SHIPYARDS GROUP

Avelingen-West 20  
4202 MS Gorinchem  
The Netherlands

P.O. Box 1  
4200 AA Gorinchem  
The Netherlands

phone +31 (0)183 63 99 22  
fax +31 (0)183 63 21 89

info@damen.com  
[www.damen.com](http://www.damen.com)