

# DAMEN BUNKER BARGE B09 RANGE

## GENERAL

|                           |  |
|---------------------------|--|
| Typical applications      | Liquid bulk cargo, fuel oil  |
| Typical area of operation | Harbours, Inland waters  |
| Classification            | Lloyd's Register *100AT I.W.W. Barge, Type N Open, Double hull, S.G. 1.025, LS™, Zone 2, Carriage of oils with a F.P. exceeding 60°C |

## DIMENSIONS

|                 | BuBa  | BuBa  | BuBa  |      |
|-----------------|-------|-------|-------|------|
|                 | 3109  | 4109  | 5109  |      |
| Length mld.     | 31,00 | 41,00 | 51,60 | m    |
| Beam mld.       | 8,72  | 8,72  | 8,72  | m    |
| Depth mld.      | 3,00  | 3,00  | 3,00  | m    |
| Draught max.    | 1,94  | 1,97  | 2,00  | m    |
| Deadweight max. | 305   | 440   | 575   | tons |

## CAPACITIES

|                    |     |     |     |    |
|--------------------|-----|-----|-----|----|
| Tanks              | 2   | 3   | 4   |    |
| Cargo volume (97%) | 305 | 455 | 610 | m3 |

## DESIGN CONDITIONS

|                         |               |
|-------------------------|---------------|
| Sea water temperature   | 0° to +35° C  |
| Outside air temperature | -5° to +45° C |

## STANDARD EXECUTION

|                     |  |
|---------------------|--|
| De-aeration         | De-aeration of cargo tanks to overflow tank and de-aeration cap with ball valves and flame arrestor on overflow tank |
| Bollards            | Double bollards for mooring and/or coupling  |
| Draught marks       | At fore, mid and aft on PS and SB every 20 cm  |
| Boarding ladders    | 2 on SB and 2 on PS built into the hull  |
| Cathodic protection | Anodes on underwater part of the hull  |
| Cargo system        | Manifold, valves, pressure gauges, screens high-level alarm and flowmeters   |
| Tank hatches        | With counter weight for easy opening   |
| Container fittings  | For both 10 and 20 ft containers to be used for optional containerized equipment e.g. fuel blender, stores etc.      |
| Bilge tank          | Located in the aft void space connected to drip trays at the cargo manifold  |
| Bilge pump          | Electrically driven 10 m3/h capacity   |
| Navigation lighting | Navigation lights  |

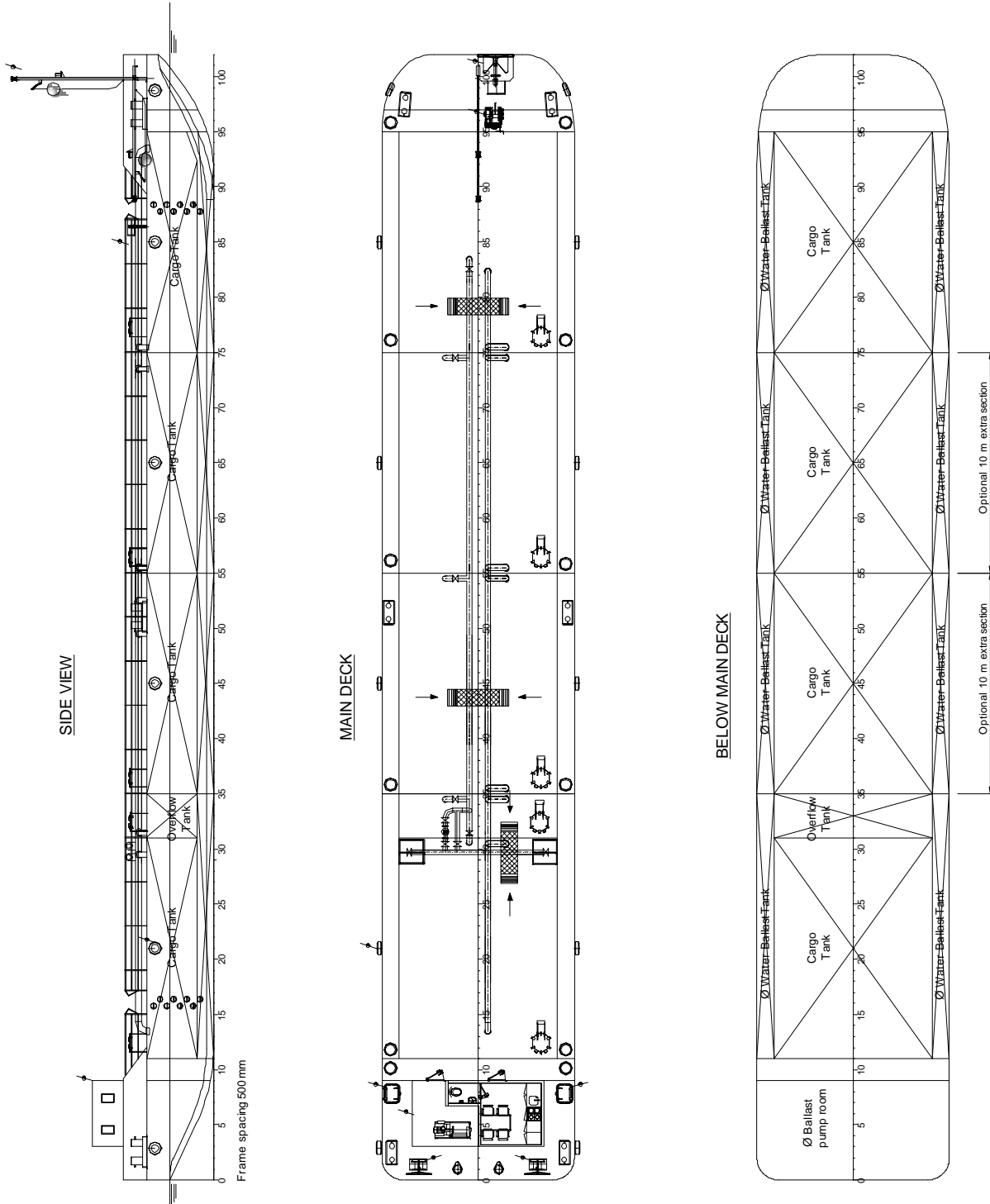
## OPTIONAL EQUIPMENT

|               |   |
|---------------|---|
| Cargo pumps   | 100 m3/h capacity                                     |
| Generator set | CAT C4.4 generator set                                |
| Accommodation | Day accommodation including pantry and sanitary space |
| Winches       | Anchor / Mooring / Coupling winches                   |
| Anchor        | Anchor and wire                                       |
| Fendering     | Tyre fenders around the perimeter of the barge        |
| Anti-fouling  | Anti-fouling paint system                             |

\* Mentioned deadweights are estimated and excl. optional equipment

\*\* Image shown with optional equipment

# DAMEN BUNKER BARGE B09 RANGE



DAMEN SHIPYARDS GROUP

Avelingen-West 20  
4202 MS Gorinchem  
The Netherlands

P.O. Box 1  
4200 AA Gorinchem  
The Netherlands

phone +31 (0)183 63 99 22  
fax +31 (0)183 63 21 89

info@damen.com  
[www.damen.com](http://www.damen.com)