



# SERVICE OPERATIONS VESSEL 8417

## GENERAL

All data are preliminary and subject to change.

Basic functions To provide stepless access onto Offshore Wind Farm assets for technicians, tools and parts by access system, crane and daughter craft, mainly in Service Operations.

Classification ✕Hull ✕Mach, Wind Farms Service Ship L2, SP(90)  
Unrestricted Navigation,  
+ AUT-UMS / Inwatersurvey / SDS  
+ Dynapos AM/AT -R / Comf-Noise 2  
Green Passport EU, Protected FO tanks,  
Electric Hybrid (PB)

## DIMENSIONS

Length overall	84.0 m
Beam moulded	17.0 m
Depth moulded	6.4 m
Service draught base / keel	4.3 m

## CAPACITIES

Fuel oil	Approx. 260 m <sup>3</sup>
Fr. water, potable	Approx. 90 m <sup>3</sup>
Deadweight (depending on options selected)	Approx. 900 t at max dr. 4.40m,
Cargo weather deck area	Approx. 320 m <sup>2</sup> (6 x 20ft cont.)
Covered warehouse areas	Approx. 480 m <sup>2</sup> maindeck 200 m shelf length, 2 levels charterer's workshop
Max. weatherdeck load	90 t at 1m above deck
Dangerous Goods	Packaged DG in paint / IMDG store. DG container on weatherdeck t.b.d.

## PERFORMANCES

Speed @ summer draught	12.0 / 10.0 kn max / eco
Endurance	30 days
Station keeping in Central North Sea	<ul style="list-style-type: none"> <li>DP2 up to and incl. 6Bf wind, 2.9m Hs, 1.5kn current, from 0-360 deg.</li> <li>DP2 up to and incl. 7Bf wind, 3.5m Hs, 1.5kn current, from +/-30 deg ahead or astern.</li> </ul>

## PROPULSION SYSTEM

Main propulsion	Diesel-electric, battery supported hybrid, 440 V, 60 Hz
Stern thrusters	2x azi thruster (ducted, FP)
Bow thrusters	2x azi thruster (ducted, FP)

## ELECTRICAL SYSTEM

Networks	440 V and 230 V – 60Hz
Main generator power	total installed appr.4.3 eMW
Main switchboard arr.	Closed-bus DP2 operations, Battery-hybrid

## DECK LAY-OUT

Helicopter winch area  
CTV landing facilities

Daughter craft

Facilities

## ACCOMMODATION

Cabins  
Charterer's personnel

Crew

Facilities

On foreship for helicopter D-size up to approx. 15m

1 fixed landing at vessel stern with height adjustable platform for stepless personnel transfer

Space reserved for optional 15m windfarm service boat and LARS. Separate SOLAS rescue boat, or optional FRC and LARS.

- knuckle boom crane to lift up to 1t cargo on/off CTV foredeck
- refueling of DC in stowed position and of CTV at CTV landing.

total 85 cabins for max. 90 persons on board.

typically 65 to 70 charterer's personnel in single. Cabins have direct daylight, ensuite bath room, desk, lounge chair and telephone.

Optional facilities include WiFi, LAN, and audio/video entertainment. typically 30 to 25 crew, accommodated in single / double cabins

Multiple client offices with large windows and client meeting / conference rooms.

Restaurant / lunch cafe, game room, cinema, smoking lounge, reception and waiting area, hospital, multiple changing areas with drying room, gym.

## NAUTICAL AND COMMUNICATION EQUIPMENT

Nautical

Radar X-band + S-band, ECDIS, Conning, GMDSS Area 1, 2 and 3, Personnel tracking system.

DP-system

DP-2 with 3 pos.ref.systems: laser and 2xDGPS. With wind farm route planning and high-speed autotrack mode.

## MISSION EQUIPMENT

Integrated lift and access system

Lift offering stepless and continuous access for personnel and trolleys between warehouse, weather deck, helideck and gangway. Gangway operates to PS only. Optionally gangway may operate both PS and SB side.

Offshore crane

either 3D motion compensated of AHC. Arranged for load cases:

- 2t active heave-comp. onto TP at >10m safe distance

- 4t at 6m distance onto quay (PS) in harbour mode.

Daughter craft

Up to 1x 15m daughter craft and LARS, choice of leading OEM. Capacity: up to 10 SP + 2crew; cargo 3x europallets up to 1.0t total weight

## OPTIONS

Helicopter deck

The winch area can be fitted as a landing area with a D-value of 17m

Monitoring facilities

Vessel motion monitoring and reporting, wave monitoring and reporting, POB / mustering system . VSAT, WiFi, LAN, 4g signal coverage, DECT portable telephones, video conference system.

Network and communication

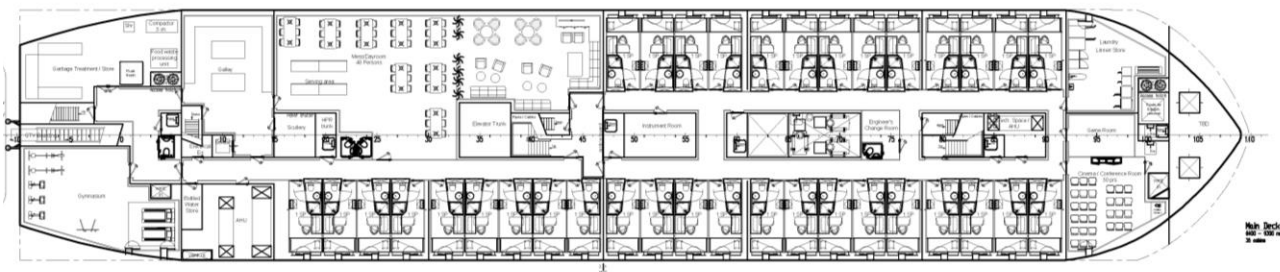
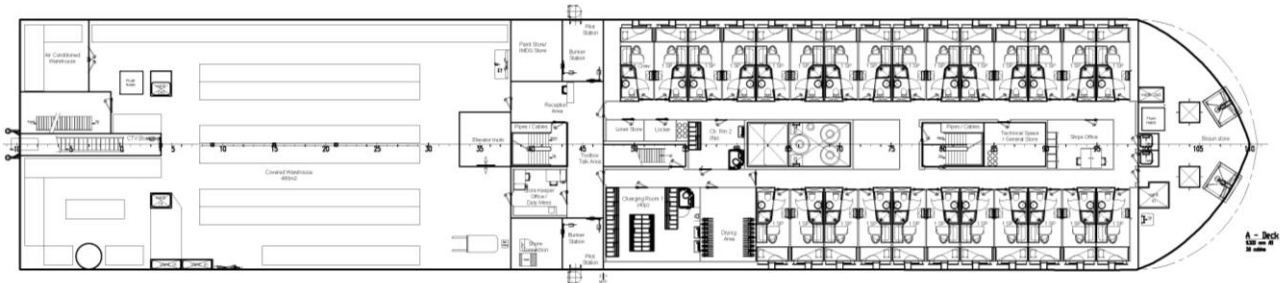
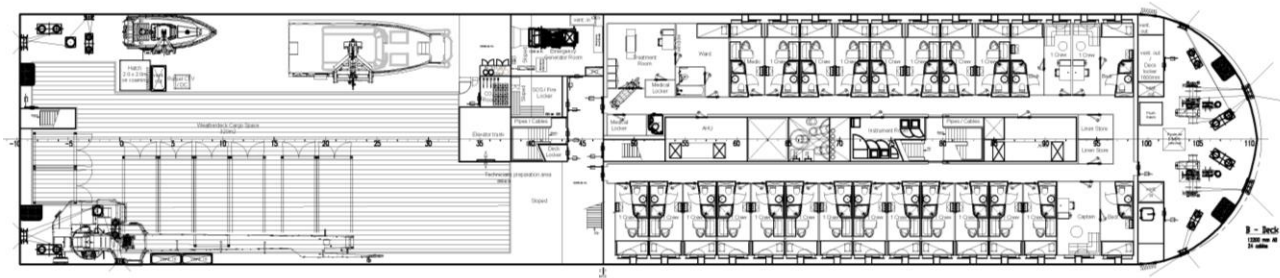
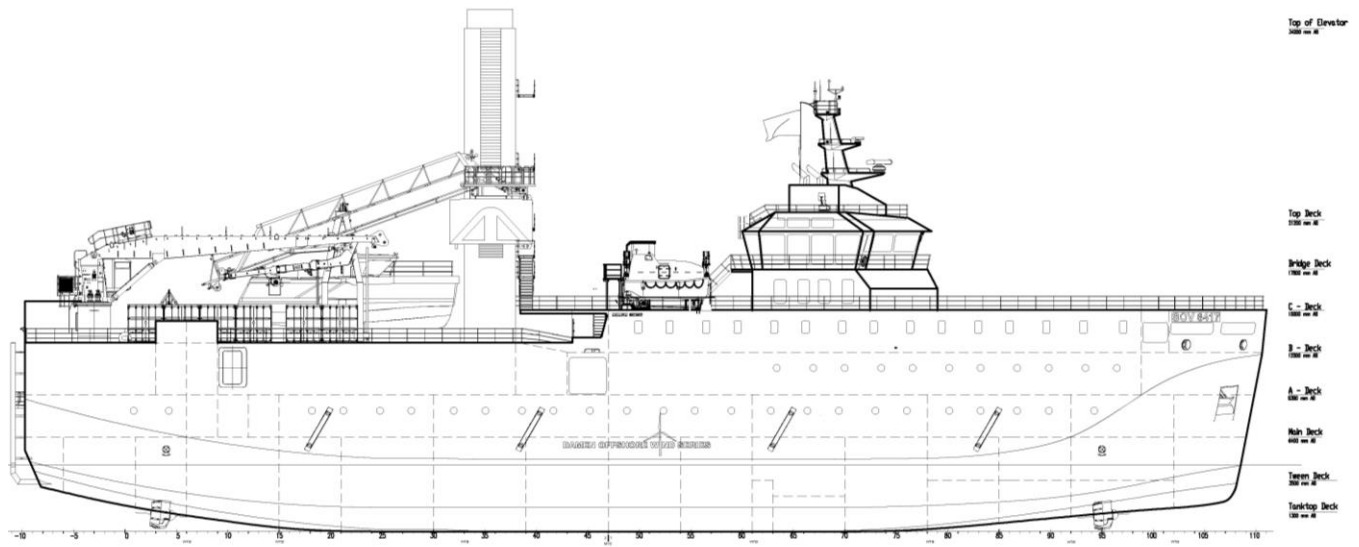
Entertainment

Audio and video (Video-on-demand and sat. TV).

DP position reference system

RangeGuard MonoPole ; Scenescan MonoPole

# SERVICE OPERATIONS VESSEL 8417



DAMEN SHIPYARDS GROUP

Avelingen-West 20  
4202 MS Gorinchem  
The Netherlands

P.O. Box 1  
4200 AA Gorinchem  
The Netherlands

phone +31 (0)183 63 99 22  
fax +31 (0)183 63 21 89

info@damen.com  
[www.damen.com](http://www.damen.com)

© No part of the leaflet may be reproduced in any form, by print, photo print, microfilm, or any other means, without written permission from Damen Shipyards Group