



## DAMEN SAFETY STANDBY VESSEL 4711

### VOS TRACKER, VOS TRADER, VOS TRAPPER & VOS TRAVELLER

#### GENERAL

YARD NUMBER	553004, 553005, 553006 & 553007
DELIVERY DATE	September 2007, December 2007, March 2008, May 2008
BASIC FUNCTIONS	Standby and rescue operations near offshore installations
CLASSIFICATION	Lloyd's Register *100A1, *LMC, UMS Descriptive note: Safety Standby Vessel
SSV REGULATIONS	UKOOA, NMD, DMA, Nogepa
FLAG	Dutch
OWNER	Vroon Offshore Services B.V. The Netherlands

#### DIMENSIONS

LENGTH O.A.	48.20 m
LENGTH B.P.P.	44.40 m
BEAM MLD.	11.00 m
DEPTH MLD.	5.50 m
DRAUGHT SUMMER	4.25 m
DEADWEIGHT (SUMMER)	425 t

#### TANK CAPACITIES

BALLAST WATER	165 m <sup>3</sup>
FUEL OIL	230 m <sup>3</sup>
POTABLE WATER	150 m <sup>3</sup>

#### PERFORMANCES (TRIALS)

SPEED (AT 4.25 M DRAUGHT)	13.8 kn
SPEED (AT BOW THRUSTER)	6.7 kn

#### PROPULSION SYSTEM

MAIN ENGINE	1x ABC 6DZC
PROPULSION POWER	1x 1325 kW at 1000 rpm
PROPELLER	1x 2650 mm, FPP
RETRACTABLE BOW THRUSTER	1x 300 ekW, 1100 mm, FPP

#### AUXILIARY EQUIPMENT

GENERATOR SETS	2x CAT C18, 440 ekW at 1800 rpm, 440 V, 60 Hz
EMERG. / HARBOUR GEN. SET	1x CAT C4.4, 76 ekW at 1800 rpm, 440 V, 60 Hz

#### DECK LAY-OUT

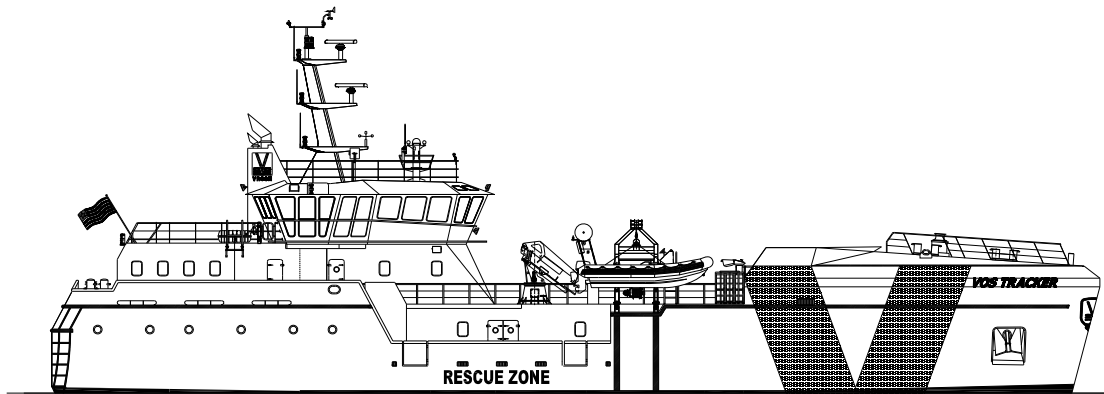
ANCHOR MOORING WINCH	1x Hydraulic
CAPSTANS	2x Electric, each 5 t pull
DECK CRANE	1x Electric-hydraulic, knuckle boom, 2.7 t at 12.85 m (harbour)
FAST RESCUE CRAFT	2x 6.5 m, 15 persons
OTHER RESCUE EQUIPMENT	2x Climbing nets 1x Dacon Scoop

#### ACCOMMODATION

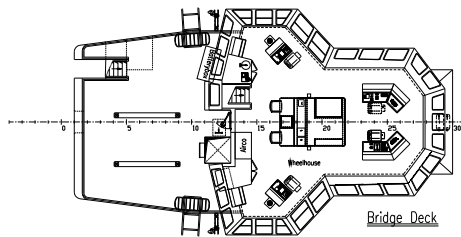
CREW	14 persons
PASSENGER	4 persons
SURVIVORS	125 persons

#### NAUTICAL AND COMMUNICATION EQUIPMENT

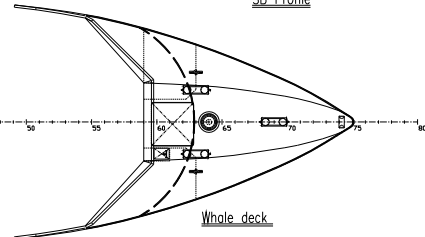
RADAR SYSTEM	2x X-band
GMDSS	Area A3



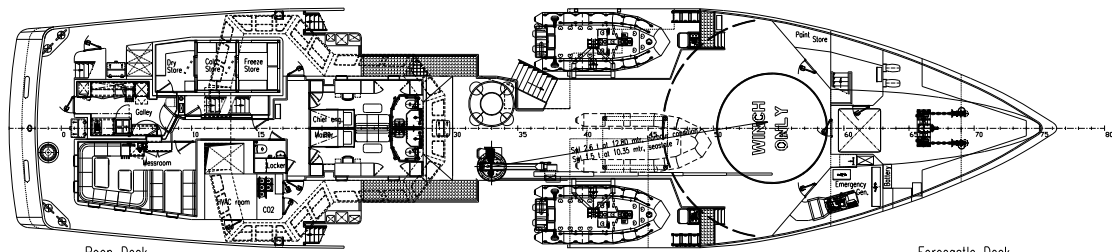
SB Profile



Bridge Deck

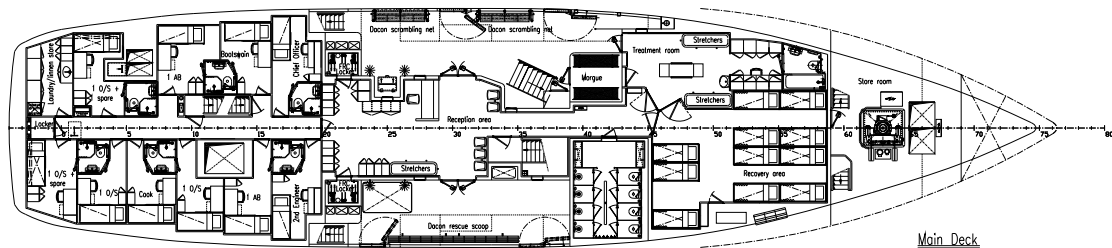


Whale deck

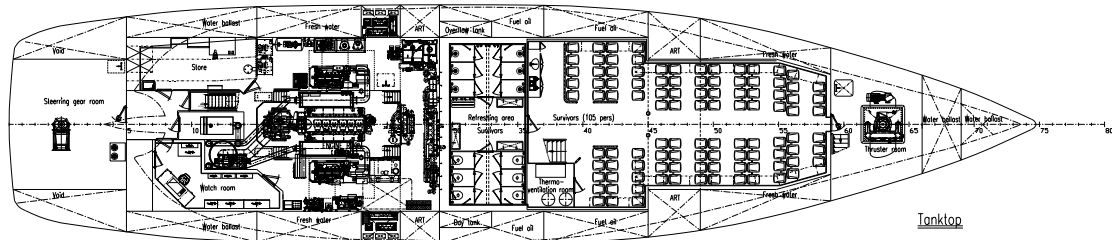


Poop Deck

Forecastle Deck



Main Deck



Tanktop

# DAMEN SAFETY STANDBY VESSEL 4711

VOS TRACKER, VOS TRADER, VOS TRAPPER & VOS TRAVELLER



DAMEN SHIPYARDS GORINCHEM

Member of the DAMEN SHIPYARDS GROUP



Industrieterrein Avelingen West 20  
4202 MS Gorinchem

P.O. Box 1  
4200 AA Gorinchem  
The Netherlands

phone +31 (0)183 63 99 11  
fax +31 (0)183 63 21 89

info@damen.nl  
www.damen.nl