



## DAMEN HYDROGRAPHIC SURVEY VESSEL 6613

### TRAN DAI NGHIA

#### GENERAL

YARD NUMBER	556053
DELIVERY DATE	December 2010
BASIC FUNCTIONS	Multi purpose vessel for hydrographic and oceanographic survey, training, buoy laying mine counter measure
CLASSIFICATION	Lloyd's Register ⚓ 100 A1 ⚓ LMC UMS
FLAG	Vietnamese
OWNER	Vietnamese Navy

#### DIMENSIONS

LENGTH O.A.	66.35 m
LENGTH B.P.P.	60.25 m
BEAM MLD.	13.20 m
DEPTH MLD.	6.50 m
DRAUGHT SUMMER	3.10 m
DEADWEIGHT (SUMMER)	565 ton

#### TANK CAPACITIES

BALLAST WATER	338 m <sup>3</sup>
FUEL OIL	255 m <sup>3</sup>
FRESH WATER	162 m <sup>3</sup>

#### PERFORMANCES (TRIALS)

SPEED (AT 2.90 M DRAUGHT)	12.6 kn
---------------------------	---------

#### PROPULSION SYSTEM

MAIN ENGINES	Diesel-Electric, 400 V, 50 Hz
PROPULSION POWER	2x 600 kW at 1200 rpm
PROPELLERS	2x 1600 mm, FPP, Azimuth
BOW THRUSTERS	1x 140 kW, 840 mm, FPP

#### AUXILIARY EQUIPMENT

MAIN GENERATOR SETS	4x CAT 3412C TA, each 500 kW at 1500 rpm
EMERG./HARBOUR GEN. SET	1x CAT 3406C TA, 215 kW at 1500 rpm

#### DECK LAY-OUT

BOAT HANDLING CRANE	1x electric-hydraulic, 5 t at 10 m (sea state 2)
DECK CRANE	1x electric-hydraulic, 3.2 t at 10 m (harbour)
A-FRAMES	1x for towed side sonar winch and 2x general purpose winches
BOATS	1x for shallow water CTD winch 1x for deep water CTD winch 2x survey boats 8.0 m 1x RIB 4.0 m

#### ACCOMMODATION

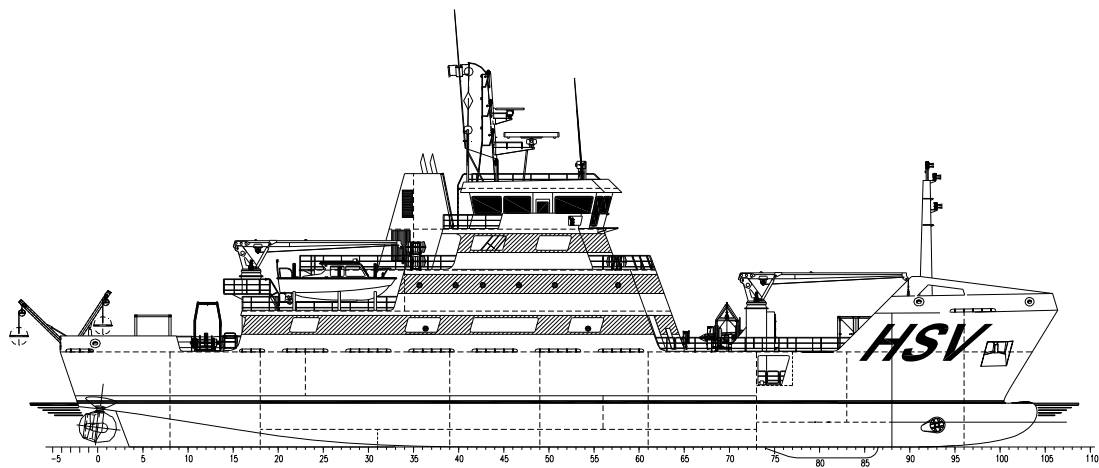
CREW	19 persons
ADDITIONAL	27 persons

#### NAUTICAL AND COMMUNICATION EQUIPMENT

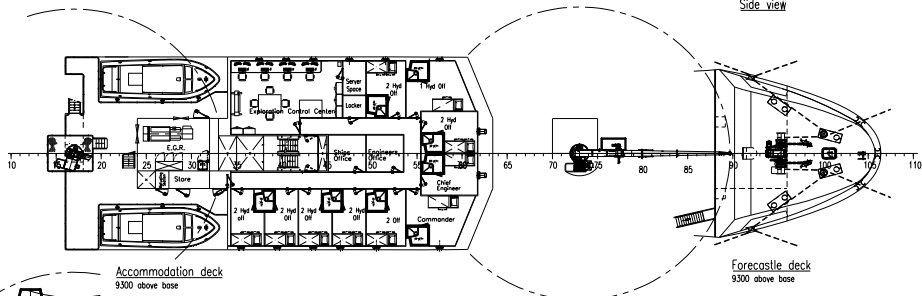
RADAR SYSTEM	1x X-band + S-band
GMDSS	Area A3

#### SURVEY EQUIPMENT

EXTENSIVE HYDROGRAPHIC / OCEANOGRAPHIC EQUIPMENT SUCH AS:	Multi Beam Echo Sounder Single Beam Echo Sounder Towed Side Scan Sonar Ultra Short Base Line CTD System
---	---

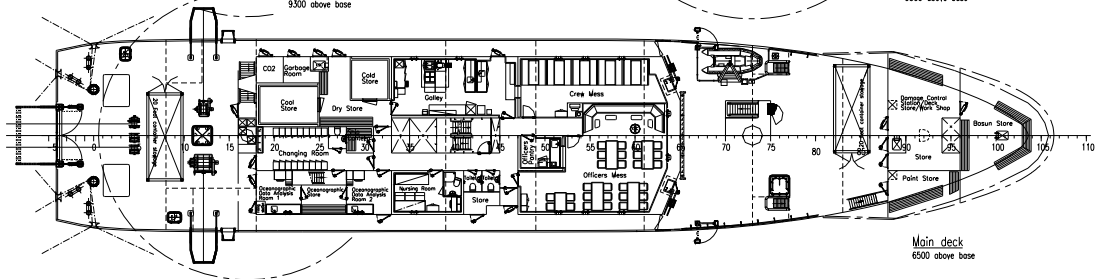


Side view

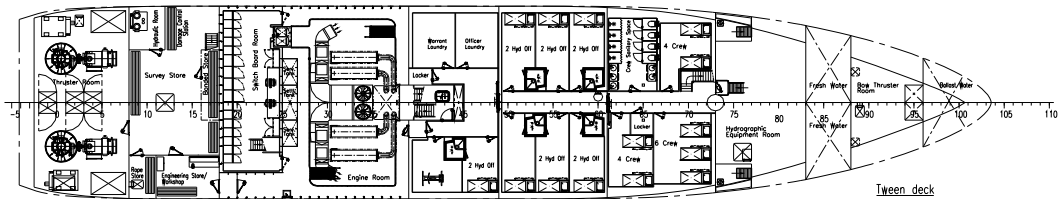


Accommodation deck  
9300 above base

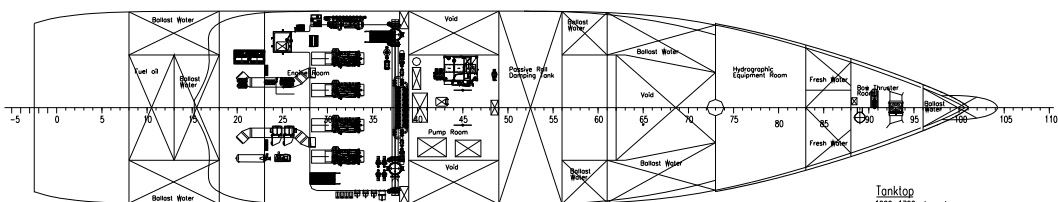
Forecastle deck  
9300 above base



Main deck  
6500 above base



Tween deck  
3500 above base



Tanktop  
1200-1700 above base

# DAMEN HYDROGRAPHIC SURVEY VESSEL 6613

## TRAN DAI NGHIA



DAMEN SHIPYARDS GORINCHEM

Member of the DAMEN SHIPYARDS GROUP



Industrieterrein Avelingen West 20  
4202 MS Gorinchem

P.O. Box 1  
4200 AA Gorinchem  
The Netherlands

phone +31 (0)183 63 99 11  
fax +31 (0)183 63 21 89

info@damen.nl  
www.damen.nl