



DAMEN CONSTRUCTION SUPPORT VESSEL 8019

GENERAL

Basic Functions	Light Offshore Construction Works by means of Offshore rated knuckle boom crane and ROV support on a stable DP-2 platform
Classification	Lloyds Register * 100A1, ECO, WDL(5 T/M2), * LMC, UMS, *IWS, DP(AA), CAC(3), Helicopter Landing Area

DIMENSIONS

Length o.a.	84.20 m
Beam mld.	19.00 m
Depth mld.	8.00 m
Draught summer	6.00 m
Deadweight (summer)	3200 t
Deck area	550 m ²
Deck load (VCG at 1 m above deck)	1000 t

TANK CAPACITIES

Ballast water	1600 m ³
Fuel oil (service)	850 m ³
Potable water	980 m ³
Fuel oil cargo	730 m ³

PERFORMANCES (APPROX.)

Speed (at 5.00 m draught)	13.5 kn
---------------------------	---------

PROPULSION SYSTEM

Main engines	Diesel-electric, 690 V, 60 Hz
Propulsion power	2x electric motors of 2200 kW each
Azimuthing thrusters	2x 2800 mm FP propellers in nozzles
Bow thrusters	3x 900 kW, 2000 mm, FP

AUXILIARY EQUIPMENT

Networks	690 V, 440 V and 230 V - 60 Hz
Main generator sets	4x 1880 ekW at 900 rpm
Emerg./Harbour generator set	1x 430 ekW at 1800 rpm
Shore Supply	1x 400A

DECK LAY-OUT

Anchor mooring winch	1x electric-hydraulic, with rope drum and two warping heads
Capstans	2x electric, each 5 t pull
Store crane	1x knuckle boom 3 t at 16 m (harbour)

CARGO HANDLING SYSTEM

Offshore crane	1x offshore knuckle boom crane, max 100 t at 10 m. Active heave compensated winch with 3000 m wire
Tugger winch	2x electric-hydraulic, 10 t pull

ROV SUPPORT

Launch and recovery	1x hydraulic operated A-frame, 12 t
Operational	1x ROV control station 1x ROV workshop

HELICOPTER FACILITIES

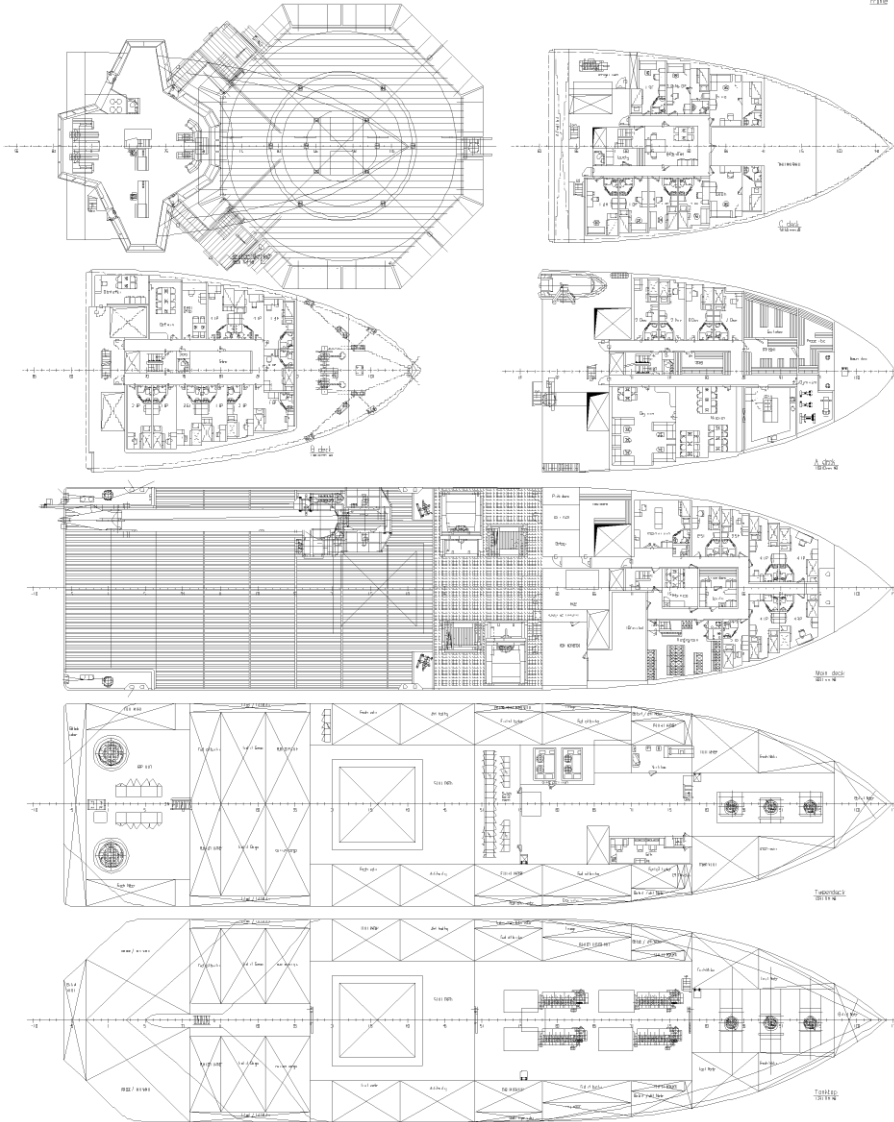
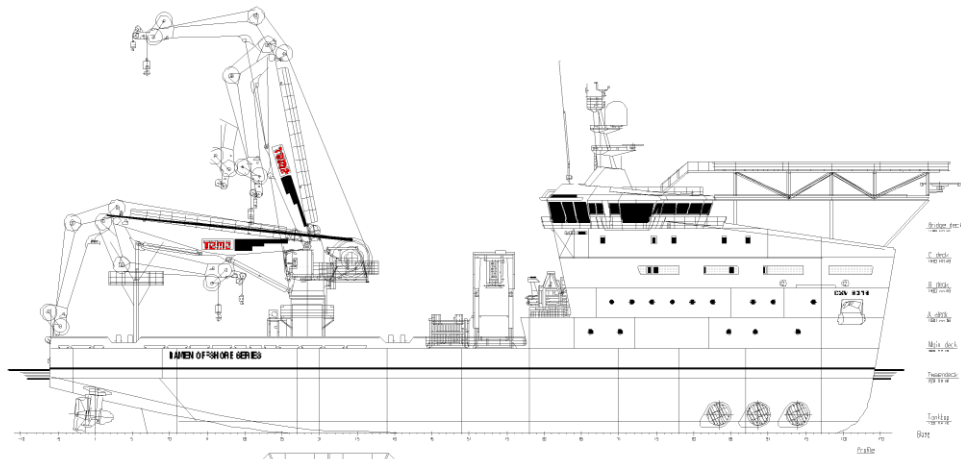
Helicopter deck capacity	D-factor 21 m, take-off weight 12 ton
--------------------------	---------------------------------------

ACCOMMODATION

Single berth cabins	10x
Double berth cabins	14x
4 berth cabins	4x
	Offices, conference room, recreation rooms all cabins provided with internet, telephone and satellite tv.

NAUTICAL AND COMMUNICATION EQUIPMENT

Nautical	radar X-band + S-band, ECDIS, Conning
DP-system	DP-2 with Hydro-Acoustic and Laser reference systems
GMDSS	Area A3



DAMEN CONSTRUCTION SUPPORT VESSEL 8019

DAMEN

DAMEN SHIPYARDS GORINCHEM

Industrieterrein Avelingen West 20
4202 MS Gorinchem

P.O. Box 1
4200 AA Gorinchem
The Netherlands

phone +31 (0)183 63 99 11
fax +31 (0)183 63 21 89

info@damen.nl
www.damen.nl



Member of the DAMEN SHIPYARDS GROUP