



DAMEN MULTI-PURPOSE VESSEL 6014

GENERAL

BASIC FUNCTIONS

The vessel is suitable for a.o. anchor handling, diving support, buoy-laying, supply for water, fuel and general cargo to remote areas / offshore platforms, fire-fighting, evacuation of sick personnel
 Lloyd's Register
 ⓧ100A1 Tug, Fire-Fighting Ship 1 (2400 m³/h) with water spray, WDL(+), ⓧ LMC, UMS, DP(AA), CAC(3), EP

CLASSIFICATION

DIMENSIONS

LENGTH O.A.	60.30 m
LENGTH B.P.P.	55.00 m
BEAM MLD.	14.00 m
DEPTH MLD.	6.00 m
DRAUGHT SUMMER	4.50 m
DEADWEIGHT (SUMMER)	1100 t
DECK AREA	300 m ²
DECK STRENGTH	5 ton/m

TANK CAPACITIES

BALLAST	580 m ³
FUEL OIL (SERVICE)	340 m ³
POTABLE WATER	480 m ³
FUEL OIL CARGO	550 m ³

PERFORMANCES (APPROX.)

SPEED (AT 5.00 M DRAUGHT)	14.0 kn
BOLLARD PULL	64 ton

PROPULSION SYSTEM

MAIN ENGINES	2x Wartsila 6L26, 2040 bkW at 1000 rpm
PROPELLERS	2x 2400 mm, CPP, Azimuth in nozzle
BOW THRUSTERS	2x 450 kW, 1500 mm, FPP

AUXILIARY EQUIPMENT

MAIN GENERATOR SETS	2x 830 kW at 1800 rpm
EMERG./HARBOUR GEN. SET	1x 200 kW at 1800 rpm

DECK LAY-OUT

ANCHOR MOORING WINCH	1x combined, with 2 warping heads and rope storage drum
CAPSTANS	2x each 5 t pull
ANCHOR HANDLING / TOWING WINCH	Waterfall type, 1 towing drum, 1 AH drum
TOWING PINS	100 t pull, 150 t brake holding power
CHAIN FORK	2x 160 t SWL
DECK CRANE	2x 250 t SWL
TUGGER WINCH	25 t at 7 mtr, 12t at 15 mtr (offshore)
STERN ROLL	2x each 15 t pull
	1x 210 t SWL

CARGO HANDLING SYSTEM

FUEL OIL PUMPS	2x 100 m ³ /hr at 70 m head
FRESH WATER PUMPS	1x 100 m ³ /hr at 70 m head
FIRE FIGHTING	2x diesel driven pumps, 1700 m ³ /hr;
	2x fire monitors; water spray system

DIVING SUPPORT

DECOMPRESSION CHAMBER	3 persons, 5 bar
-----------------------	------------------

ACCOMMODATION

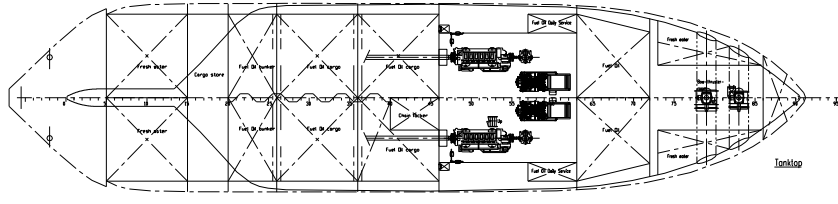
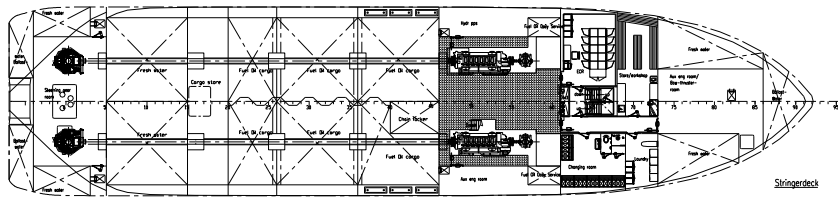
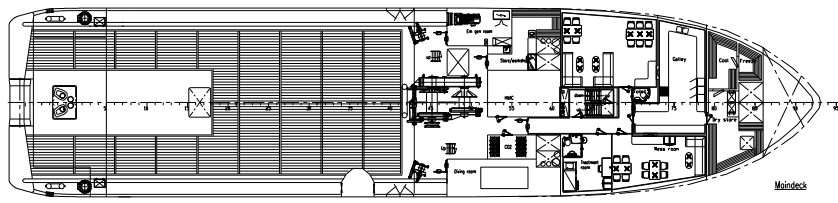
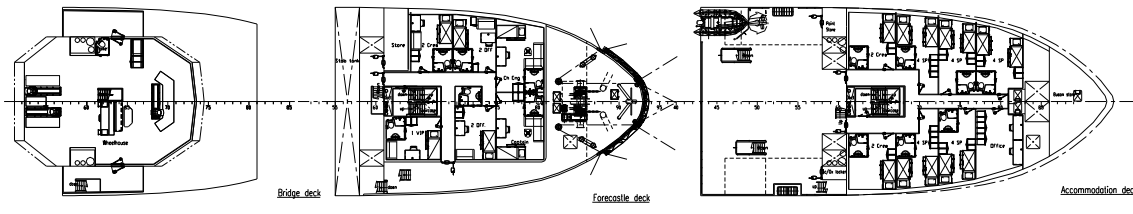
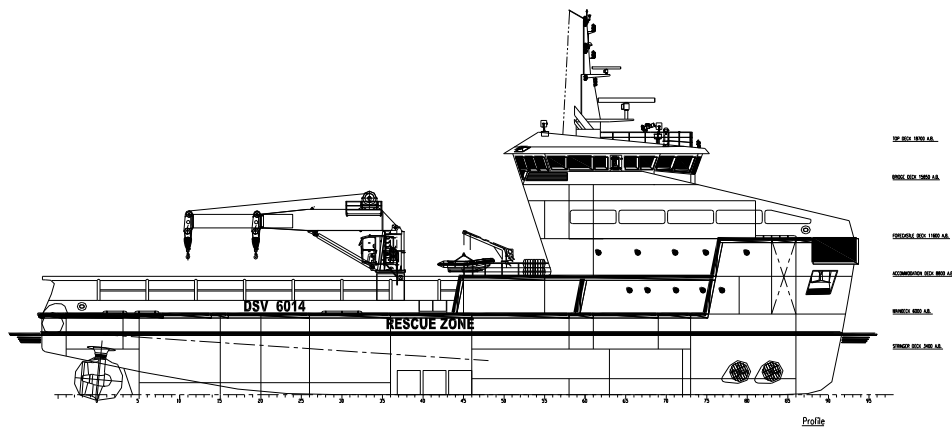
CREW	12 persons
SPECIAL PERSONNEL	26 persons

NAUTICAL AND COMMUNICATION EQUIPMENT

NAVIGATION	a.o. X-band radar, S-band radar, ECDIS
DP- SYSTEM	DP-2

OPTIONS

A.O. HIGHER BOLLARD PULL, HYDROGRAPIC SURVEY EQUIPMENT, DRY BULK CARGO CAPACITY, OIL RECOVERY



DAMEN MULTI-PURPOSE VESSEL 6014



DAMEN SHIPYARDS GORINCHEM

Member of the DAMEN SHIPYARDS GROUP



Industrieterrein Avelingen West 20
4202 MS Gorinchem

P.O. Box 1
4200 AA Gorinchem
The Netherlands

phone +31 (0)183 63 99 11
fax +31 (0)183 63 21 89

info@damen.nl
www.damen.nl