



DAMEN ANCHOR HANDLING TUG SUPPLIER 200

GENERAL

Basic functions	Offshore supply, towing, anchor handling operations and ROV support
Classification	Lloyds Register *100 A1 Anchor Handler, Offshore Supply Ship, Tug, *IWS, ECO, *LMC, UMS, CAC(3), DP (AA)

DIMENSIONS

Length o.a.	89.10 m
Length load line	80.70 m
Beam mld.	22.00 m
Depth mld.	9.10 m
Draught summer (base)	7.00 m
Draught summer (keel)	8.20 m
Deadweight (summer)	3700 t
Deck area	650 m ²
Deck load (at 1 m above deck)	1500 t

TANK CAPACITIES

Ballast water	2100 m ³
Fuel oil (service)	410 m ³
Potable water (service)	145 m ³
Fuel oil (cargo)	1050 m ³
Potable water (cargo)	635 m ³
Liquid mud	625 m ³
Brine	330 m ³
Chain lockers	330 m ³

PERFORMANCES (APPROX.)

Speed (at 6.30 m draught)	16.3 kn
Bollard pull	215 t

PROPULSION SYSTEM

Main engines	4x MAN 9L27/38
Propulsion power	2x 3285 kW at 800 rpm
Propellers	2x 4600 mm, CPP in optima nozzles
Bow thruster	1x 900 kW, 1990 mm, FPP
Stern thruster	2x 900 kW, 1990 mm, FPP

AUXILIARY EQUIPMENT

Shaft generators	2x 1600 ekW at 1800 rpm, 690 V, 60Hz
Generator sets	2x CAT C32, each 715 ekW at 1800 rpm, 690 V, 60 Hz
Emerg./harbour generator set	1x CAT C9, 238 ekW at 1800 rpm, 440 V, 60 Hz

DECK LAY-OUT

Deck crane	1x knuckle boom 5 t at 16 m (harbour)
Anchor handling rail cranes	2x knuckle-telescope 3 t at 15 m
AH/Towing winch	2x electric, double drum, 400 t pull, 500 t brake, 2100 m of 86 mm wire
Special handling drum	1x electric, 400 t pull, 500 t brake, 2700 m of 86 mm wire
Secondary winch	2x electric, 140 t pull, 140 t brake, 1600 m of 208 mm rope
Towing pins	4x SWL, 400 t, hydraulic
Chain fork	2x SWL, 650 t, hydraulic
Stern roller	1x SWL, 500 t, split drum, ø 4,0 x 6 m
Tugger winches	2x electric, each 25 t pull

CARGO HANDLING SYSTEM

Ballast pump	2x 100 m ³ /hr at 3 bar
Fuel oil pump	2x 0-150 m ³ /hr at 6 bar
Fresh water pump	1x 0-150 m ³ /hr at 6 bar
Liquid mud pump	1x 0-75 m ³ /hr at 8 bar
Brine pump	1x 0-75 m ³ /hr at 8 bar

ACCOMMODATION

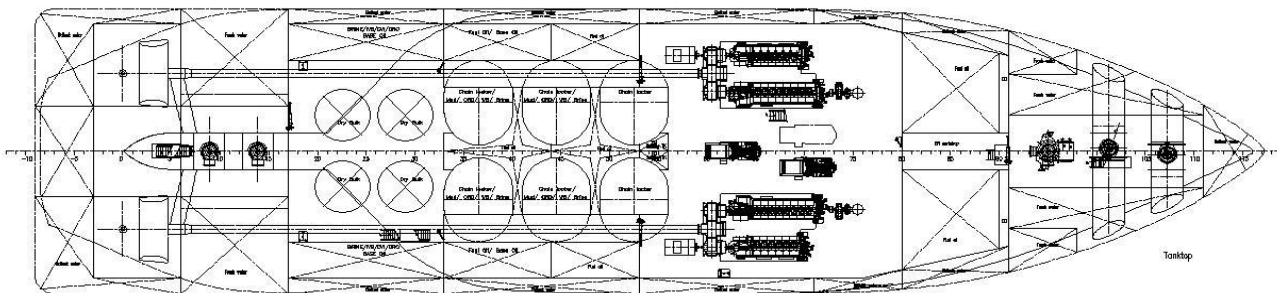
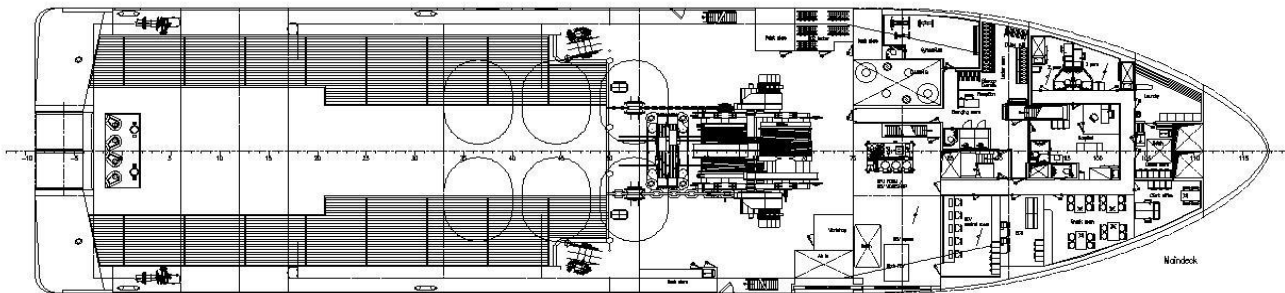
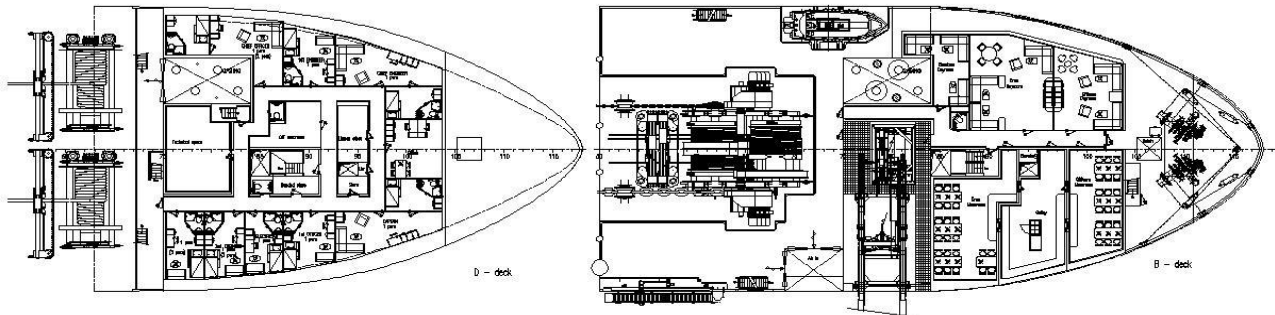
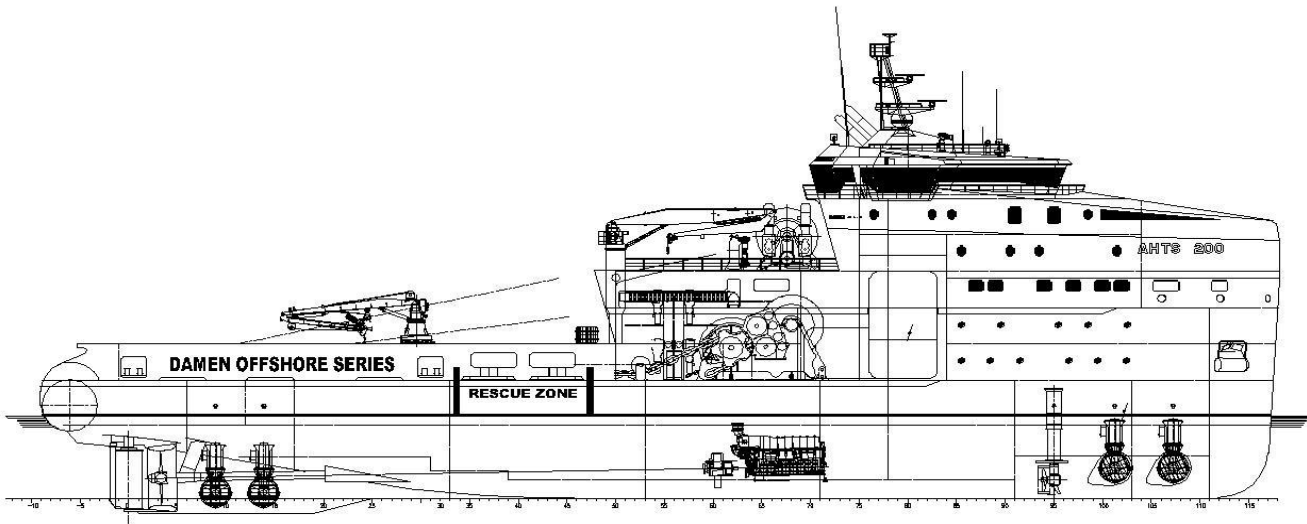
Crew	21
------	----

NAUTICAL AND COMMUNICATION EQUIPMENT

Radar systems	1x X- band + S-band
DP – system	DP-2
GMDSS	Area A3

OPTIONS

Extended accommodation	60 persons
Dry Bulk system	240 m ³
Hybrid propulsion	
Exhaust gas cleaning system	
Travelling cranes	
Launch and Recovery for ROV	
LP Hydraulic AHT Winch	
Extended Side thrusters	3x bow & 2x stern
Fire Fighting	I or II
Oil Recovery	
Petrobras annex V equipment	



DAMEN ANCHOR HANDLING TUG SUPPLIER 200

DAMEN

DAMEN SHIPYARDS GORINCHEM

Member of the DAMEN SHIPYARDS GROUP



Industrieterrein Avelingen West 20
4202 MS Gorinchem

P.O. Box 1
4200 AA Gorinchem
The Netherlands

phone +31 (0)183 63 99 11
fax +31 (0)183 63 21 89

info@damen.com
www.damen.com