



## DAMEN MODULAR PUSHER 1807

”YN 523028”

### GENERAL

Yard number	523028
Basic functions	The Damen Modular Pusher is a vessel for pushboat operations for inland water service series, built in steel to standard design.
Description	The entire hull of the Vessel consists of container sized units. These container sized units are called Damen Modular Barges and can be coupled together in the water with a specially designed coupling system, called the Damen Link. Because of this modular system, the entire Vessel can be transported by ship, truck or train to her final place of destination and assembled locally.

### DIMENSIONS

Length o.a.	20.00	m
Length pontoon	18.00	m
Beam o.a.	7.40	m
Depth at sides	1.80	m
Draught (empty)	0.90	m

### CAPACITIES

Fuel	2x 7.2	m <sup>3</sup>
Fresh water	4.6	m <sup>3</sup>
Ballast water	2x 7.4	m <sup>3</sup>
Max. deck load	6.80	t/m <sup>2</sup>

### PERFORMANCES (approx.)

Speed	6	kn
-------	---	----

### PROPULSION AND STEERING SYSTEM

Main engine	2x diesel driven deck mountable propulsion units.
Total power	446 bkW (600 bhp) at 2200 rpm

### PRIMARY SHIP SYSTEMS

Bilge / deckwash / fiifi pump	2x
-------------------------------	----

### ELECTRICAL SYSTEM

Network	24/230V
Main generator set	1 x 20 kVA

### DECK LAY-OUT

Anchor	360 kg Pool (High Holding Power)
Anchor winch	1x
Bollard (double)	4x
Pushbow with single bollard	2x
Flat bollard	4x
Coupling winch	2x

### LIFE SAVING EQUIPMENT

Life buoy	2x
Life jacket	5x
Fire fighting monitor	2x
Fire extinguisher	4x
First-aid kit	1x

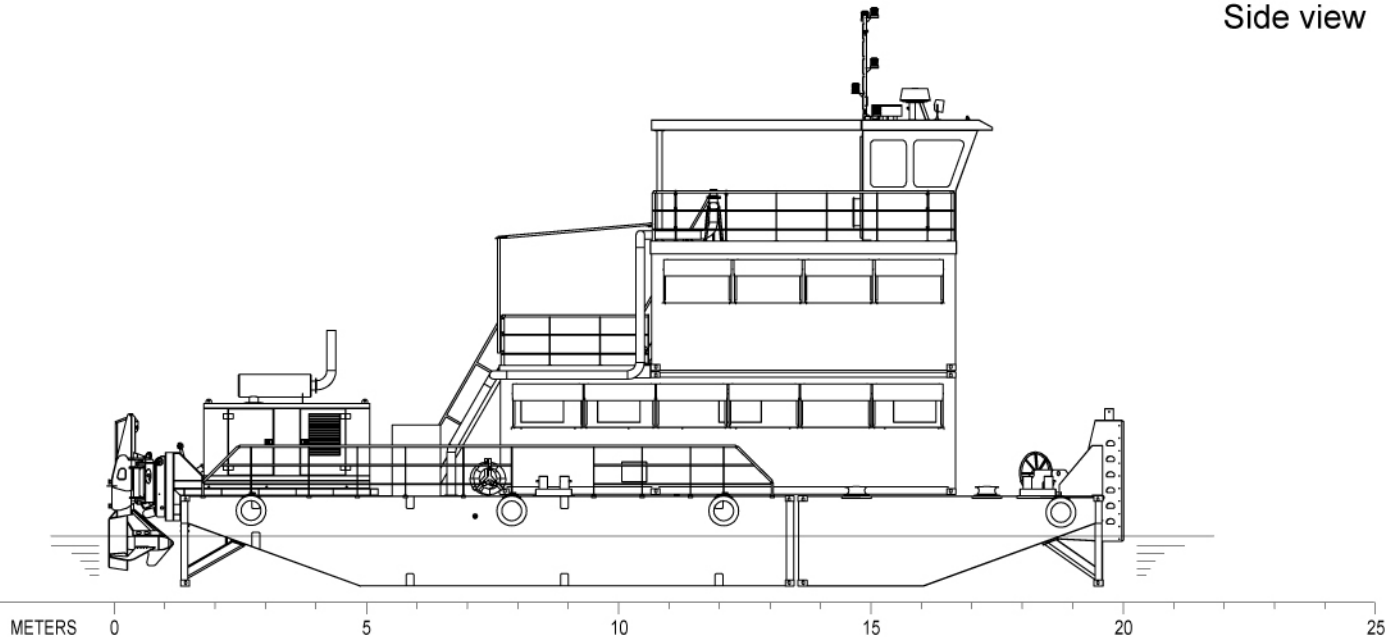
### SUPERSTRUCTURE

Accommodation main deck	1x 2 crew cabin, 1x workshop, 1x pantry and mess, 1x sanitary space
Accommodation upper deck	1x captain's cabin, 1x 2 crew cabin
Wheelhouse	The efficient layout offers an unobstructed view in all directions from bridge deck.

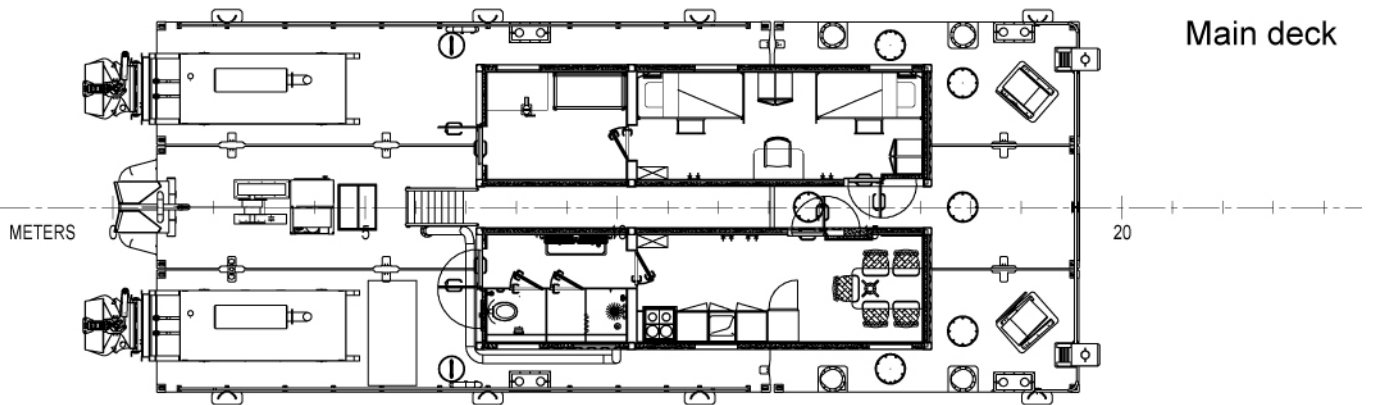
### NAUTICAL AND COMMUNICATION EQUIPMENT

Navigation lights	All necessary navigations lights are installed.
Search light	1x
Horn	1x
Radar system	1x
GPS	1x
Magnetic compass (handheld)	1x
Echosounder	1x
VHF	1x
Barometer	1x
Binoculars	1x

Side view

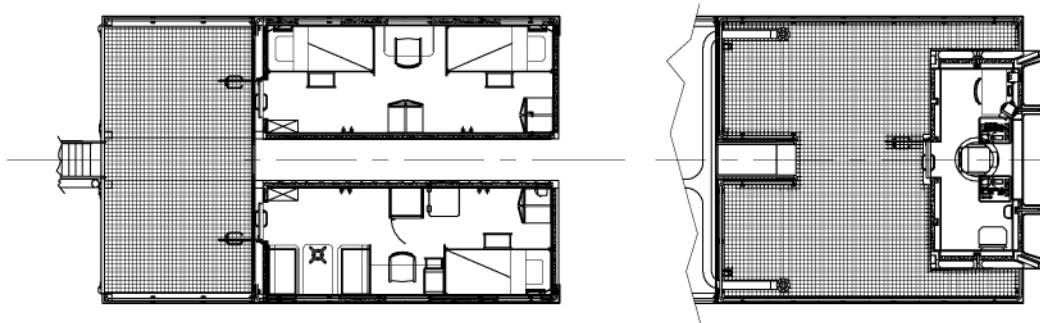


Main deck



First deck

Bridge deck



# DAMEN MODULAR PUSHER 1807

"YN 523028"

## DAMEN

DAMEN SHIPYARDS GORINCHEM

Member of the DAMEN SHIPYARDS GROUP 

Industrieterrein Avelingen West 20  
4202 MS Gorinchem

P.O. Box 1  
4200 AA Gorinchem  
The Netherlands

phone +31 (0)183 63 99 11  
fax +31 (0)183 63 21 89

info@damen.com  
www.damen.com