



MODULAR PONTOON 3015

“COSIDER T.P 1”

GENERAL

Yardnumber	523044
Delivery date	December 2016
Basic functions	The Damen Modular Pontoon (MPo) 3015 is specially designed as a stable work platform for multiple craning operations, such as: drilling, dredging, lifting and the piling of spud poles and sheet piles. The Pontoon is built in steel to standard design.
Classification	Bureau Veritas
Flag	I ✕ Hull ✕ Machinery, Pontoon, coastal.
Owner	Algeria Cosider

DIMENSIONS

Length overall	30.80 m
Length pontoon	30.60 m
Beam overall	15.07 m
Beam pontoon	14.80 m
Depth at sides	2.44 m
Draught (empty)	0.60 m
Draught (at a payload 430t)	1.60 m
Cargo deck area	450 m ²
Maximum deck load	15 t/m ²

TANK CAPACITIES

Ballast water	130 m ³
Fuel oil	10.2 m ³
Fresh water	10 m ³

PRIMARY SHIP SYSTEMS

Deckwash / fifi / bilge pump 2x (portable)

ELECTRICAL SYSTEM

Network	12 / 230 / 400 V
Main generator set	1x 100 kVA

DECK LAY-OUT

Spud (modular)	3x
Spud dimension	Ø 800 mm x 18 m (2x 9 m)
Spud winch	3x (hydraulic)
Mooring winch	2x (hydraulic)
Bollard (double)	4x
Towing bracket	2x
Wooden deck	220 m ²
Mast (foldable)	1x

LIFE SAVING EQUIPMENT

Life buoy	2x
Life jacket	5x
Fire extinguisher	2x
First aid kit	1x

FEATURES

Zinc anodes	
HD marine paint	

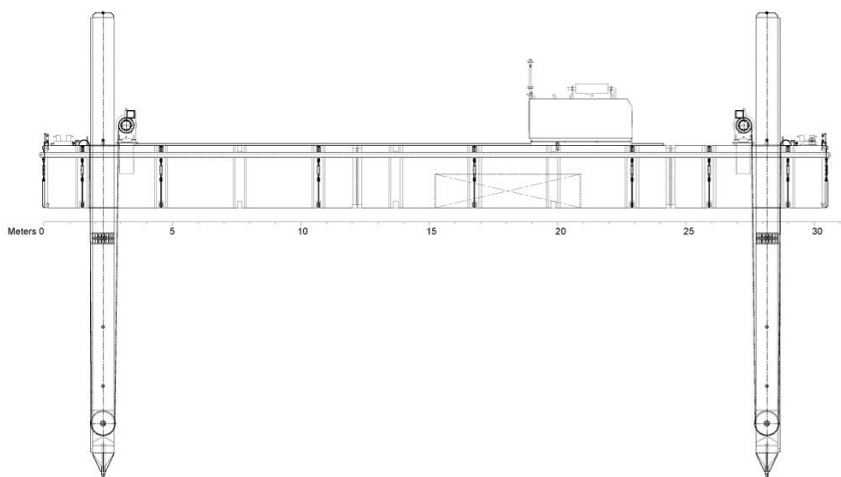
NAUTICAL AND COMMUNICATION EQUIPMENT

Navigation lights	All necessary navigations lights are installed
Floodlight	2x
VHF handheld	2x

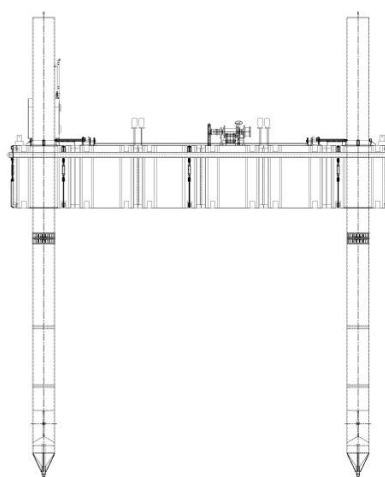
MODULAR PONTOON 3015

"COSIDER T.P 1"

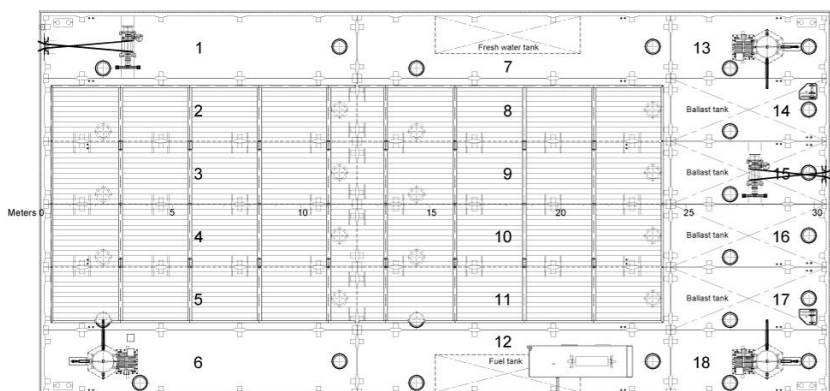
Side view



Front view



Top view with tank arrangement



DAMEN

DAMEN SHIPYARDS GROUP

Avelingen-West 20
4202 MS Gorinchem
The Netherlands

P.O. Box 1
4200 AA Gorinchem
The Netherlands

phone +31 (0)183 63 99 22
fax +31 (0)183 63 21 89

info@damen.com
www.damen.com