



DAMEN MODULAR PONTOON 2212

"YN 523038"

GENERAL

Yard number	523038
Basic functions	The Damen Modular Pontoon is a multipurpose working pontoon, built in steel to standard design.
Description	The entire hull of the Pontoon consists of container sized units. These container sized units are called Damen Modular Barges and can be coupled together in the water with a specially designed coupling system, called the Damen Link. Because of this modular system, the entire pontoon can be transported by ship, truck or train to her final place of destination and assembled locally.

DIMENSIONS

Length pontoon	22.20 m
Beam pontoon	12.20 m
Depth at sides	1.80 m
Draught (empty pontoon+spuds)	0.40 m

CAPACITIES

Ballast tank	35.25 m ³
Max. deck load	6.80 t/m ²

DECK LAY-OUT

Spud	2x
Spud dimension	Ø 610 mm x 15 m
Spud bracket (modular)	2x
Bollard (double)	8x
Crane mat	16x
Tyre fender	14x

POWER PACK

Diesel driven hydraulic power pack	1x
Total power	242 kW (329 hp)
Capacity	400 l/min

IMPACT HAMMER

Hydraulic impact hammer	1x
Ram weight	3000 kg
Max. impact energy	32.32 Knm

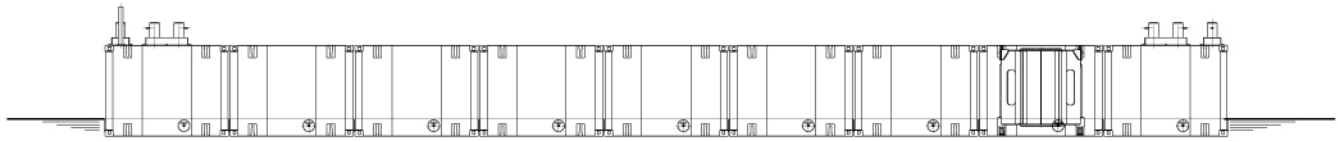
CRAWLER CRANE

Hitachi KH230-3 PD	1x
--------------------	----

EXCAVATOR

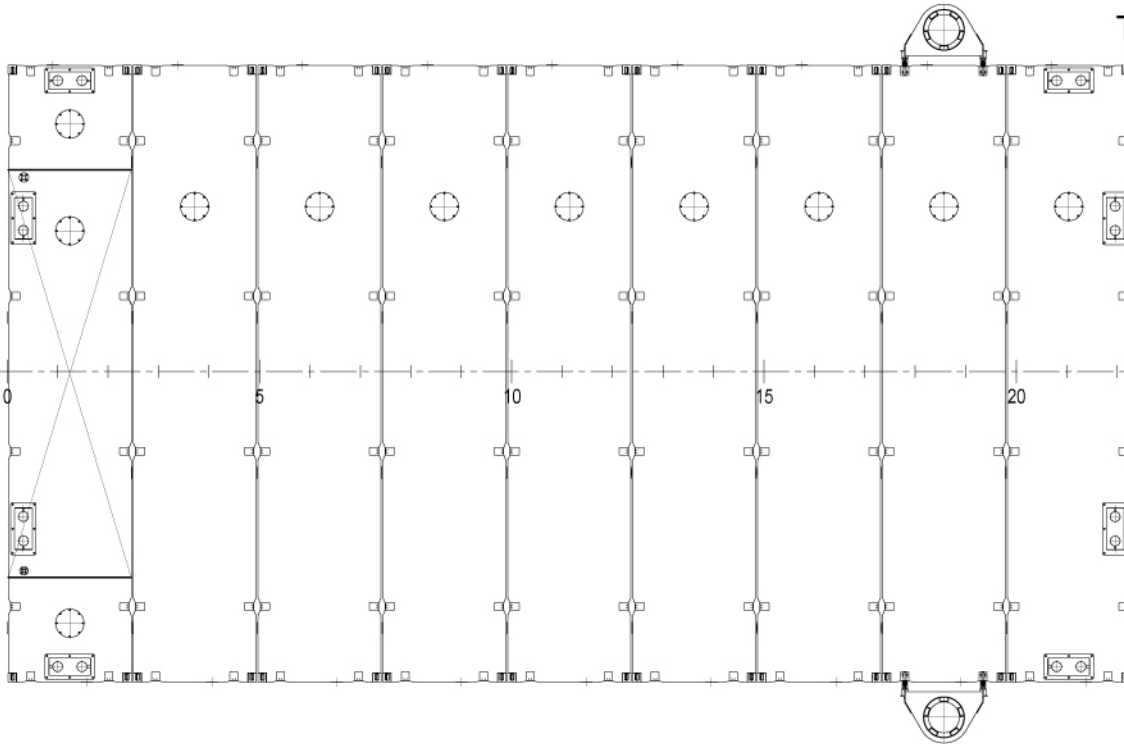
O&K RH8.5	1x
-----------	----

Side view



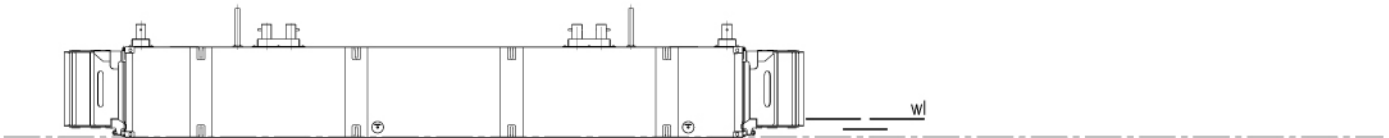
METERS 0 5 10 15 20 25

Top view



METERS 0 5 10 15 20 25

Front view



sb

ps

wl

DAMEN MODULAR PONTOON 2212

"YN 523038"



DAMEN SHIPYARDS GORINCHEM

Member of the DAMEN SHIPYARDS GROUP



Industrieterrein Avelingen West 20
4202 MS Gorinchem

P.O. Box 1
4200 AA Gorinchem
The Netherlands

phone +31 (0)183 63 99 11
fax +31 (0)183 63 21 89

info@damen.com
www.damen.com