

DAMEN MODULAR PONTOON 1212

"RN 12210"

GENERAL

Ref. number
Basic functions

12210
The Damen Modular Pontoon is a multipurpose working pontoon, built in steel to standard design. The entire hull of the Pontoon consists of container sized units. These container sized units are called Damen Modular Barges and can be coupled together in the water with a specially designed coupling system, called the Damen Link. Because of this modular system, the entire pontoon can be transported by ship, truck or train to her final place of destination and assembled locally.

Description

EXCAVATOR

O&K RH16 PMS 1x

DECK LAY-OUT

Spud	2x
Spud dimension	Ø 610 mm x 15 m
Spud bracket (modular)	2x
Bollard (double)	4x
Dragline panel	10x
Dragline dimension	5800 x 950/1000 x 200 mm

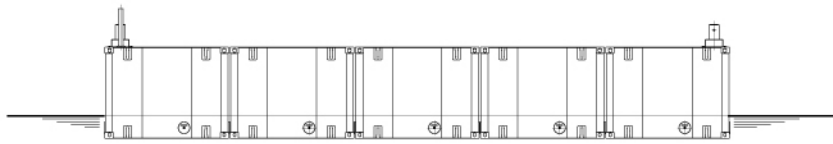
DIMENSIONS

Length pontoon	12.20 m
Beam pontoon	12.30 m
Depth at sides	1.80 m
Draught (empty)	0.48 m

FEATURES

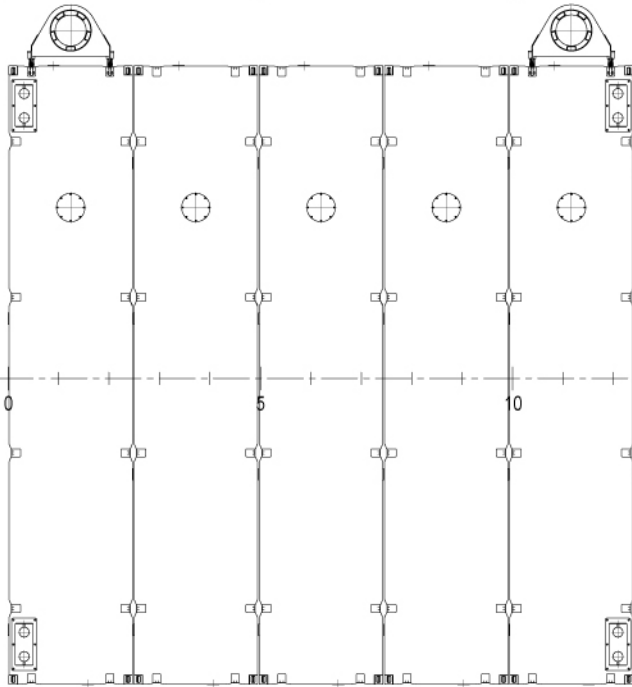
Tyre fender

Side view



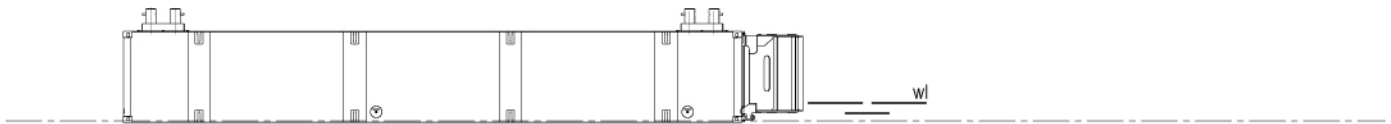
METERS 0 5 10 15 20 25

Top view



METERS 0 5 10 15 20 25

Front view



sb

ps

DAMEN MODULAR PONTOON 1212

"RN 12210"

DAMEN

DAMEN SHIPYARDS GORINCHEM

Member of the DAMEN SHIPYARDS GROUP



Industrieterrein Avelingen West 20
4202 MS Gorinchem

P.O. Box 1
4200 AA Gorinchem
The Netherlands

phone +31 (0)183 63 99 11
fax +31 (0)183 63 21 89

info@damen.com
www.damen.com