

DAMEN MODULAR DRILLING BARGE 2407

"RN 11959"

GENERAL

Ref. number	11959
Basic functions	The Damen Modular Drilling Barge is a barge, built in steel to standard design. Large variety deck equipment can be fitted to make the barge a versatile working platform
Description	The entire hull of the Barge consists of container sized units. These container sized units are called Damen Modular Barges and can be coupled together in the water with a specially designed coupling system, called the Damen Link. Because of this modular system, the entire Barge can be transported by ship, truck or train to her final place of destination and assembled locally.

DIMENSIONS

Length o.a.	24.30	m
Length pontoon	24.30	m
Beam o.a.	7.30	m
Depth at sides	2.40	m
Draught (empty)	0.38	m
Draught at a payload of 125 ton	0.73	m
Draught with full ballast tanks (6x15 ton)	1.20	m

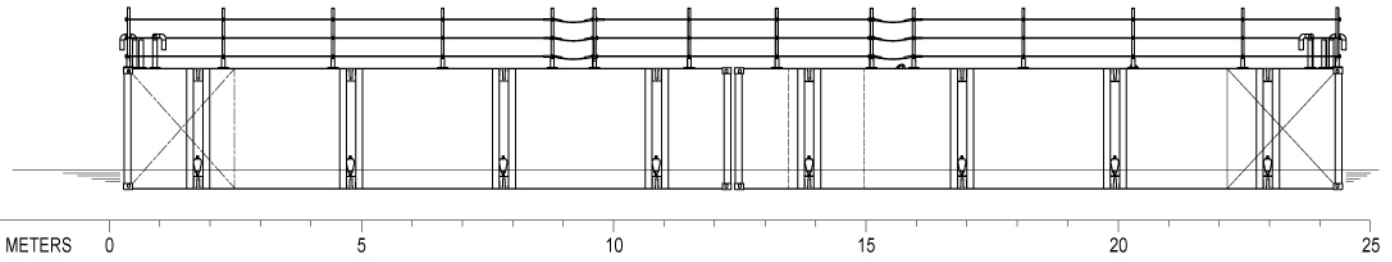
CAPACITIES

Ballast water	6x	15 m ³
Max deck load	6.8	t/m ²

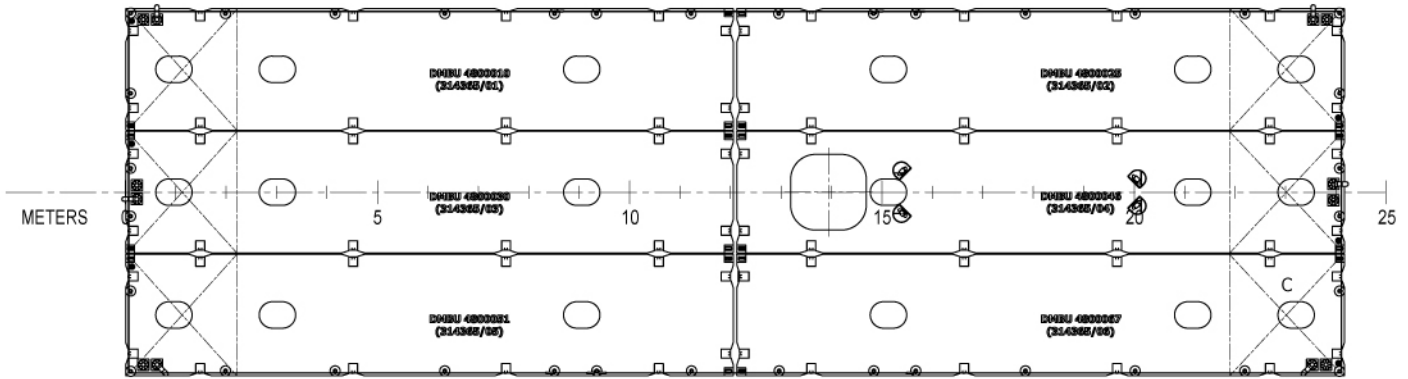
DECK LAY-OUT

Moon pool	1.50 x 1.50 m
Handrails	At all sides
Deck equipment	Owner supply

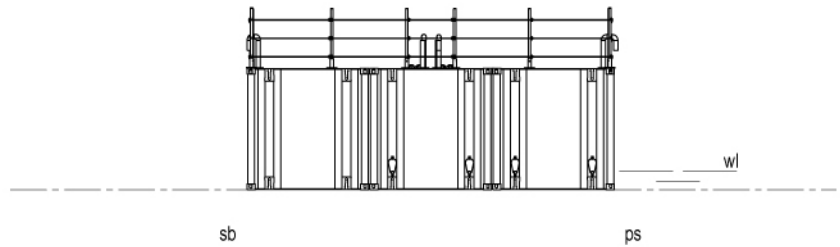
Side view



Top view



Front view



DAMEN MODULAR DRILLING BARGE 2407

"RN 11959"



DAMEN SHIPYARDS GORINCHEM

Member of the DAMEN SHIPYARDS GROUP 

Industrieterrein Avelingen West 20
4202 MS Gorinchem

P.O. Box 1
4200 AA Gorinchem
The Netherlands

phone +31 (0)183 63 99 11
fax +31 (0)183 63 21 89

info@damen.com
www.damen.com