



DAMEN MODULAR JETTY 6005

"YN 523026"

GENERAL

Yard number	523026
Basic functions	The Damen Modular Jetty is a modern jetty to which Damen vessels can berth safely, built in steel to standard design.
Description	The jetty consists of two floating pontoons which are kept in position with spuds.

DIMENSIONS

Length o.a.	60.00 m
Beam o.a.	5.00 m
Depth at sides	1.80 m
Draught	0.40 m
Max. deck load	2 t/m ²

ELECTRICAL SYSTEM

Deck lighting	4x
---------------	----

DECK LAY-OUT

Spud	3x
Spud dimension	Ø 1200 mm x 30 m
Spud bracket	3x
Bollard (double)	12x

GANGWAY

Length	12.00 m
Width (between railing)	1.50 m
Max. load	1000 kg

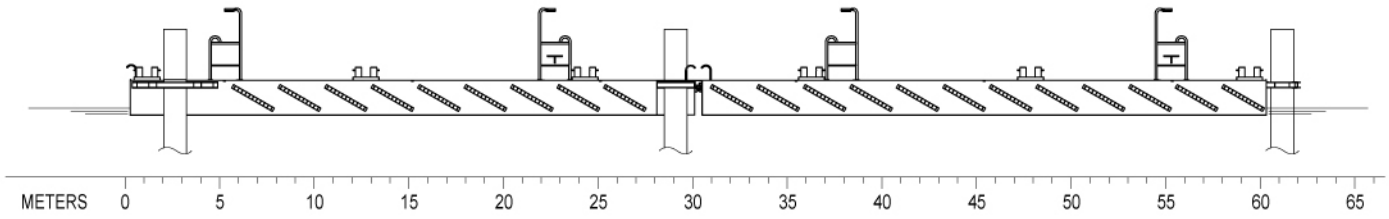
LIVE SAVING EQUIPMENT

Life buoy	4x
-----------	----

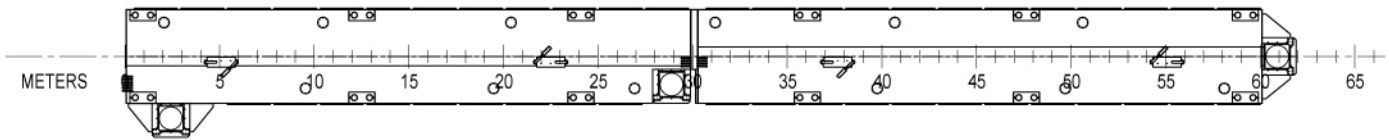
FEATURES

D-fender	48x
Power supply	4x
Air and water supply	4x

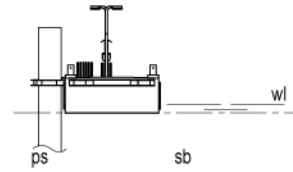
Side view



Top view



Aft view



DAMEN MODULAR JETTY 6005

"YN 523026"

DAMEN

DAMEN SHIPYARDS GORINCHEM

Member of the DAMEN SHIPYARDS GROUP 

Industrieterrein Avelingen West 20
4202 MS Gorinchem

P.O. Box 1
4200 AA Gorinchem
The Netherlands

phone +31 (0)183 63 99 11
fax +31 (0)183 63 21 89

info@damen.com
www.damen.com