

# Stan Tender 1504

STANDARD



## ▶ PICTURE OF SIMILAR VESSEL

### GENERAL

Hull material	Steel
Superstructure material	Aluminium
Basic functions	Pilot, survey, crew boat and patrol duties

### DIMENSIONS

Length overall	15.2 m
Beam overall	4.5 m
Depth at side	2.2 m
Draught max	1.2 m
Crew	Up to 2 persons
(Industrial) personnel	Up to 8 persons

### TANK CAPACITIES

Fuel oil	1.6 m <sup>3</sup>
Fresh water	0.2 m <sup>3</sup>
Sewage	0.1 m <sup>3</sup>

### PERFORMANCES

Speed	Up to 18.0 kn
Range at max speed	145 nm

### PROPULSION SYSTEM

Main engines	2x Volvo/Caterpillar
Total Power	Up to 710 bkW
Gearboxes	2x ZF/ Twin disc
Propulsion	2x fixed pitch propellers

### ELECTRICAL EQUIPMENT

Network	24 V DC, 230V 50 Hz AC
Generator set	1x 9.5 ekW

### DECK LAY-OUT

Anchor equipment	1x Pool, chain and line
Fendering	Rubber "D" type

### SHIP SYSTEMS

Ship systems are according to Class	
General service pump	1x electrically driven
Engine room ventilation	2x 1,500 m <sup>3</sup> /hr
Air conditioning	40,000 BTU/hr
Fire extinguishing	Hand operated fire extinguishers. Fixed fire-fighting system in engine room

### ACCOMMODATION

Main deck	Seats for crew and personnel
Below main deck	Mess/bunks, pantry, sanitary space and stores

### NAUTICAL AND COMMUNICATION EQUIPMENT

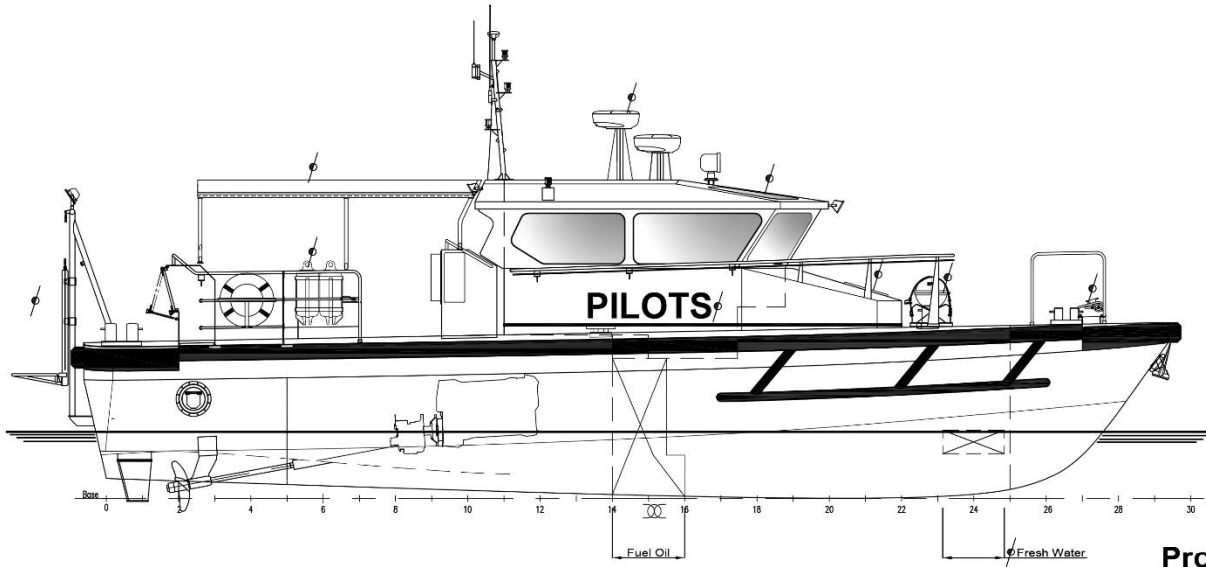
Searchlight	1x
Radar	1x
Chart plotter	1x
GPS	1x
AIS	1x
Compass	1x Magnetic
Echo sounder	1x
VHF	1x

### OPTIONAL

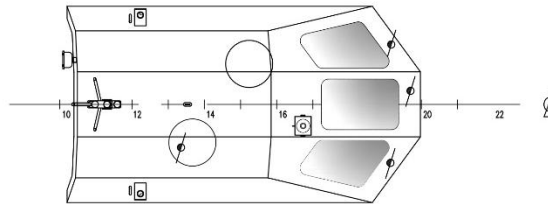
Classification	Bureau Veritas 1 #Hull • MACH Light Ship/ Fast Utility Vessel Sea Area 2 Electrically operated elevating platform
MOB recovery system	
Second radar	
Autopilot	
External communication	GMDSS A1

# Stan Tender 1504

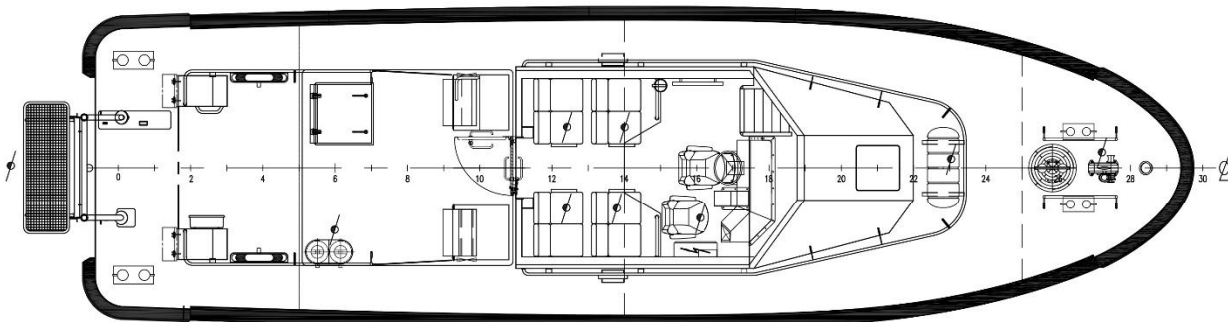
STANDARD



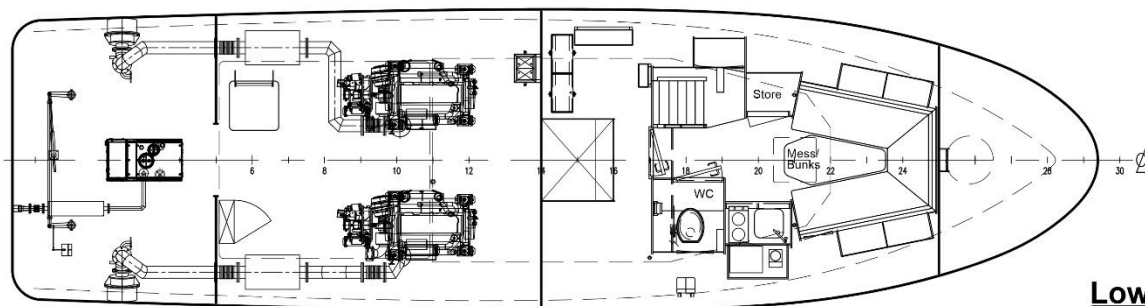
**Profile**



**Top deck**



**Main deck**



**Lower deck**

**DAMEN**

Damen.com

© No part of the leaflet may be reproduced in any form, by print, photoprint, microfilm, or any other means, without written permission from Damen Shipyards Group