

# Stan Pilot 1505 FRP

STANDARD



## ▶ PICTURE OF SIMILAR VESSEL

### GENERAL

Hull material	FRP
Superstructure material	FRP
Basic functions	Pilot duties

### DIMENSIONS

Length overall	15.4 m
Beam overall	5.0 m
Depth at side	2.2 m
Draught max	1.3 m
Crew	Up to 2 persons
Pilots	Up to 6 persons

### TANK CAPACITIES

Fuel oil	2.6 m <sup>3</sup>
Fresh water	0.1 m <sup>3</sup>
Sewage	0.1 m <sup>3</sup>

### PERFORMANCES

Speed	Up to 27.0 kn
Range at max speed	250 nm

### PROPULSION SYSTEM

Main engines	2x Volvo / Caterpillar
Total Power	Up to 1,100 bkW
Gearboxes	2x ZF 360
Propulsion	2x fixed pitch propellers

### ELECTRICAL EQUIPMENT

Network	24V dc, 230V 50 Hz AC
Generator set	9.5 ekW

### DECK LAY-OUT

Anchor equipment	1x Fortress, chain and line
Fendering	D-fender 190 x 200 all around

### SHIP SYSTEMS

General service pump	1x electrically driven
Engine room ventilation	4,400 m <sup>3</sup> /hr
Fire extinguishing	Hand operated fire extinguishers. Fixed fire-fighting system in engine room

### ACCOMMODATION

Main deck	Seats for pilots
Below main deck	sanitary space
Air conditioning	25,000 BTU/hr

### NAUTICAL AND COMMUNICATION EQUIPMENT

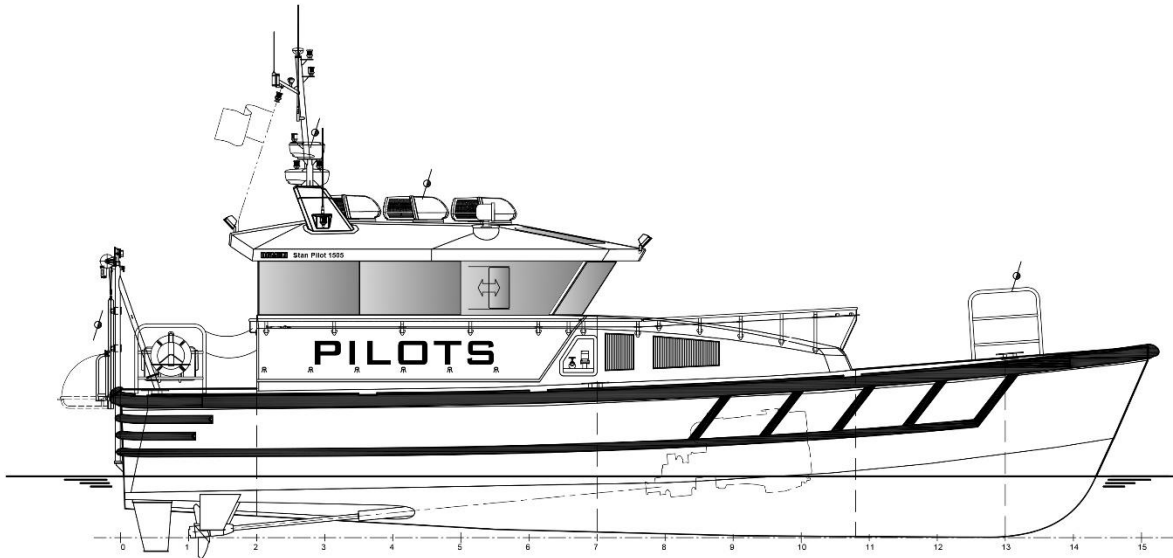
Searchlight	1x
Radar	1x
Chart plotter	1x
GPS	1x
AIS	1x
Compass	1x Magnetic
Echo sounder	1x
VHF	1x

### OPTIONAL

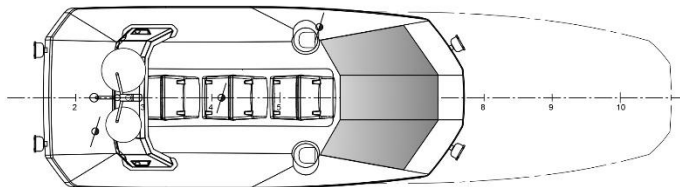
Classification	Bureau Veritas I ✱ Hull •MACH Light Ship / Pilot Boat Sea Area 3 Electrically operated GMDSS A1
MOB recovery system	
External communication	
Second generator	
Second searchlight	
Second radar	
Heading sensor	
Extra Air conditioning	1 extra unit, 12,500 BTU/hr
Navigator seat	
Extra pilot seats	2 seats for in total 6 pilots

# Stan Pilot 1505 FRP

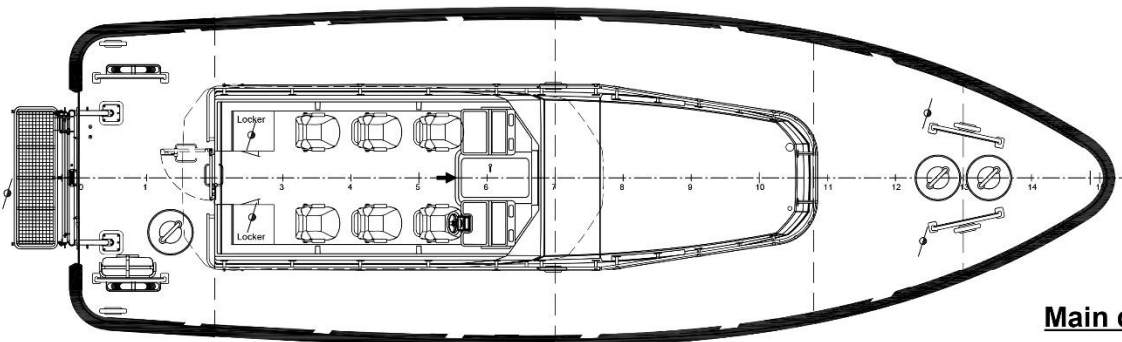
STANDARD



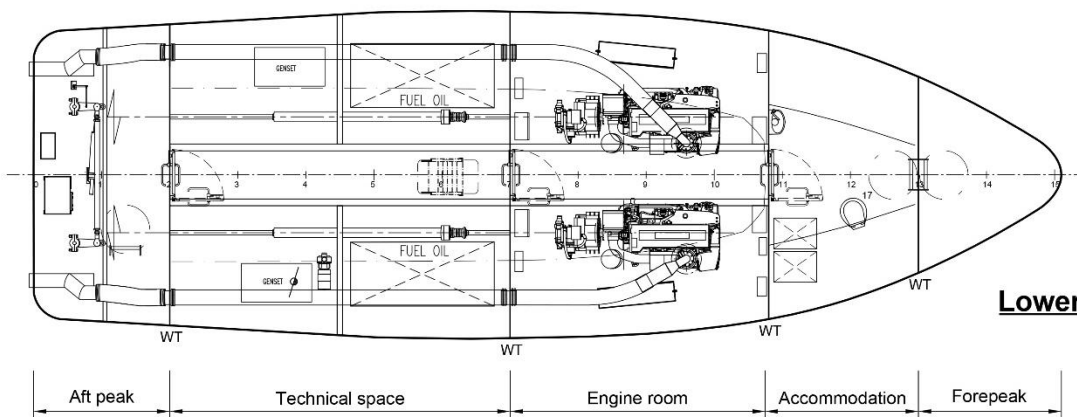
**Profile**



**Top deck**



**Main deck**



**Lower deck**

**DAMEN**

Damen.com

©No part of the leaflet may be reproduced in any form, by print, photoprint, microfilm, or any other means, without written permission from Damen Shipyards Group