

Stan Patrol 3007

STANDARD



PICTURE OF SIMILAR VESSEL

GENERAL

Hull material	Aluminium
Superstructure material	Aluminium
Basic functions	Patrol duties, maritime safety, securing economical waters, search and rescue
Classification	Bureau Veritas I * Hull • MACH Light Ship / Fast Patrol Boat Sea Area 3

DIMENSIONS

Length overall	30.5 m
Beam overall	7.1 m
Depth at side	3.2 m
Draught max	2.2 m
Gross Tonnage	137
Crew	Up to 12 persons

TANK CAPACITIES

Fuel oil	16.3 m ³
Fresh water	3.5 m ³
Sewage	4.3 m ³
Bilge water / dirty oil	1.1 m ³

PERFORMANCES

Speed	Up to 30.0 kn
Range at cruising speed (12kn)	Up to 1,600 nm

PROPULSION SYSTEM

Main engines	2x Caterpillar / MTU
Total Power	Up to 3,260 bkW
Gearboxes	2x Reintjes WVS series
Propulsion	2x fixed pitch propellers
Bow thruster	1x 50 kW hydraulically driven

ELECTRICAL EQUIPMENT

Network	24V DC, 230V / 400V 50Hz AC
Generator sets	2x 51 ekW

DECK LAY-OUT

Anchor equipment	1x HHP Pool TW, chain, electric winch
Slipway	

SHIP SYSTEMS

Ship systems are according to Class	
Fuel filtration	1x Filter Separator
Engine room ventilation	2x extraction fan, 13,000 m ³ /hr in total
Air conditioning	165,000 BTU/hr
Fire extinguishing	Fixed aerosol system in engine room

ACCOMMODATION

Bridge deck	Wheelhouse
Main deck	Crew cabins, store, sanitary spaces, galley and mess
Lower deck	Crew cabins, sanitary spaces and store

NAUTICAL AND COMMUNICATION EQUIPMENT

Integrated nav system	1x
Searchlight	1x
Radar	1x X-band
GPS	1x
Compass	1x Magnetic
Heading sensor	1x
Echo sounder	1x
Internal communication	Intercom and public address system
CCTV system	1x
External communication	GMDSS A2
Weather system	1x

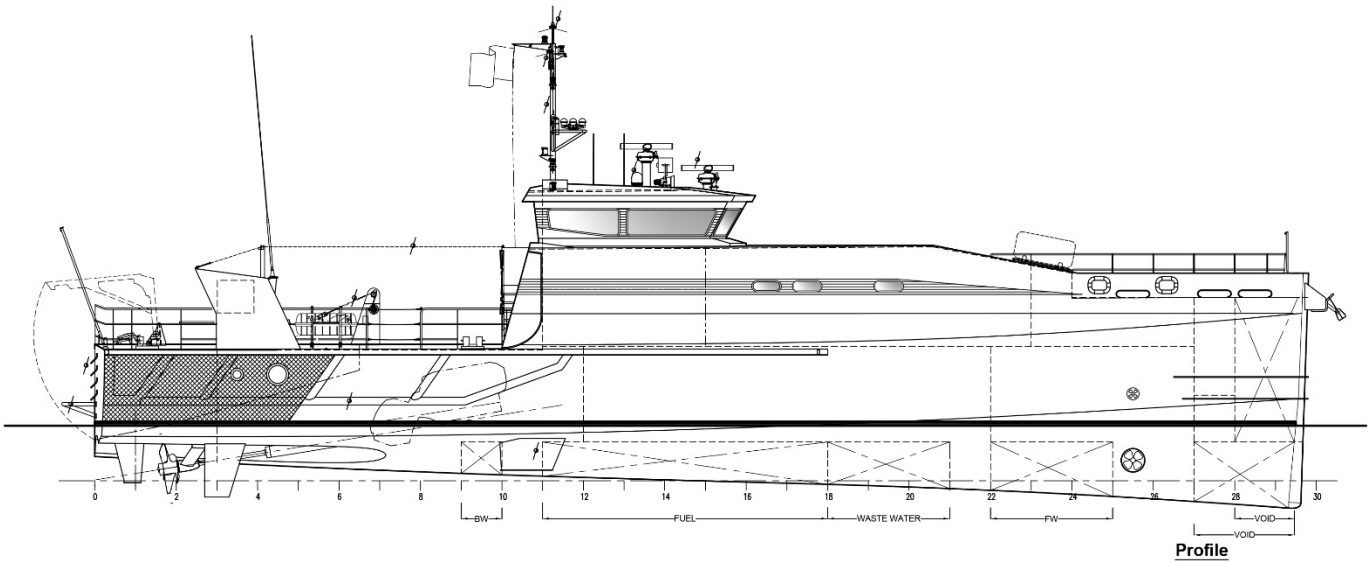
OPTIONAL

Fresh water maker	
Sewage treatment plant	
Electrical network	110V / 440V 60 Hz AC
Slipway RHIB	6.2m, >30 knots
Stabilizers	Hydraulically driven fins
Second searchlight	
Second radar	
Chart plotter / ECDIS	
AIS	
Autopilot	
Night vision camera	
External communication	GMDSS A3
Data communication	Fleet broadband, Remote monitoring
Military equipment / ballistic protection	
Alternative layout main deck or lower deck	

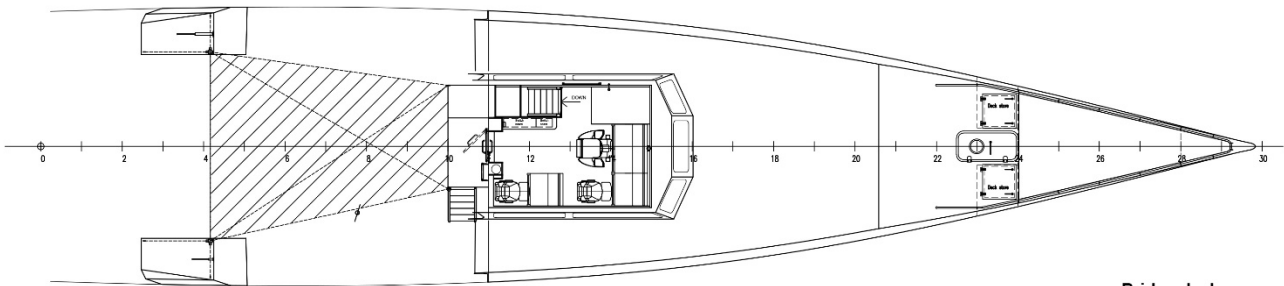
Note: Delivery of vessel and/or equipment may be export-controlled

Stan Patrol 3007

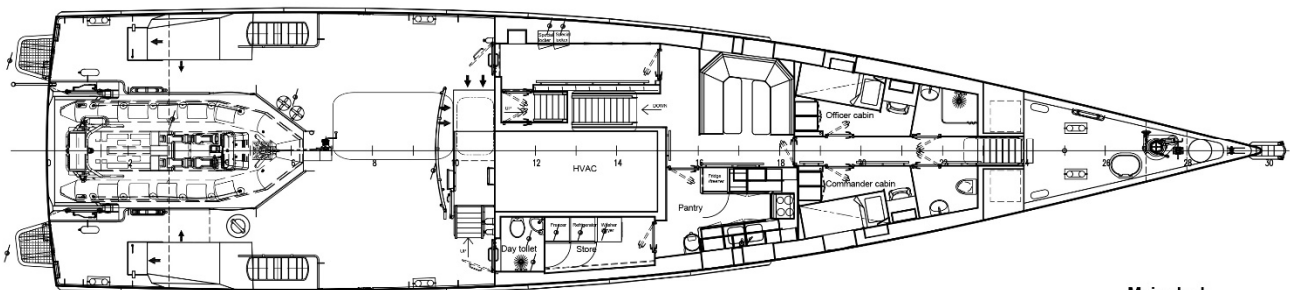
STANDARD



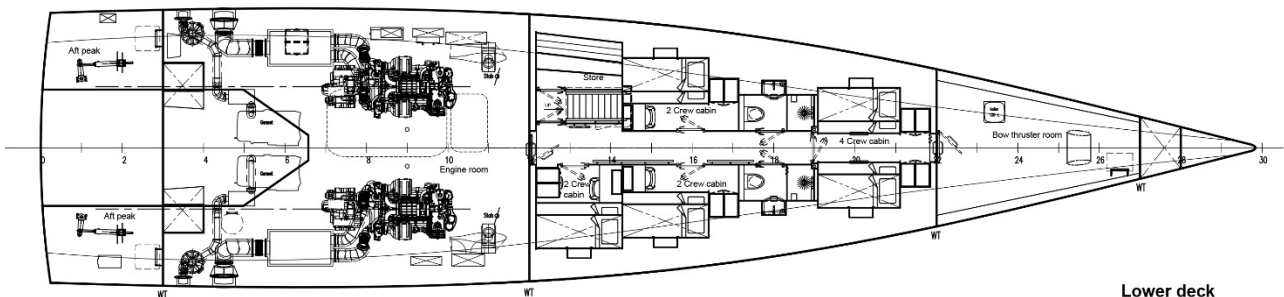
Profile



Bridge deck



Main deck



Lower deck

DAMEN

Damen.com

© No part of the leaflet may be reproduced in any form, by print, photoprint, microfilm, or any other means, without written permission from Damen Shipyards Group