

Stan Patrol 2205 FRP

STANDARD



▶ PICTURE OF SIMILAR VESSEL

GENERAL

Hull material FRP
Superstructure material FRP
Basic functions Patrol, surveillance and safety duties
Classification Bureau Veritas

1 ✶ Hull • MACH
Light Ship / Fast Patrol Boat
Sea Area 3

DIMENSIONS

Length overall 22.7 m
Beam overall 6.1 m
Depth at side 2.6 m
Draught max 1.5 m
Crew Up to 8 persons

TANK CAPACITIES

Fuel oil 5.0 m³
Fresh water 1.0 m³
Sewage 1.1 m³

PERFORMANCES

Speed 30.0 kn
Range at max speed 300 nm

PROPULSION SYSTEM

Main engines 2x MTU 10V2000 M72
Total Power 1,800 bkW
Gearboxes 2x Twin Disc MGX 6599 RV
Propulsion 2x fixed pitch propellers

ELECTRICAL EQUIPMENT

Network 24V dc, 230V 50 Hz AC
Generator set 22.5 ekW

DECK LAY-OUT

Anchor equipment 1x Fortress, chain and line
Fendering Rubber "D"-fender

SHIP SYSTEMS

General service pump 1x electrically driven
Engine room ventilation 2x 7,500 m³/hr
Fire extinguishing Hand operated fire extinguishers. Fixed fire-fighting system in engine room (Aerosol)

ACCOMODATION

Main deck 8x motion damped seats
Below main deck Mess, pantry, toilet, shower, stores and cabins
Air conditioning Up to 96,000 BTU/hr

NAUTICAL AND COMMUNICATION EQUIPMENT

Searchlight 1x
Radar 1x
GPS 1x
AIS 1x
Compass 1x Magnetic
Heading sensor 1x
Echo sounder 1x
VHF 1x
EPIRB 1x
SART 1x
Wind measuring system 1x

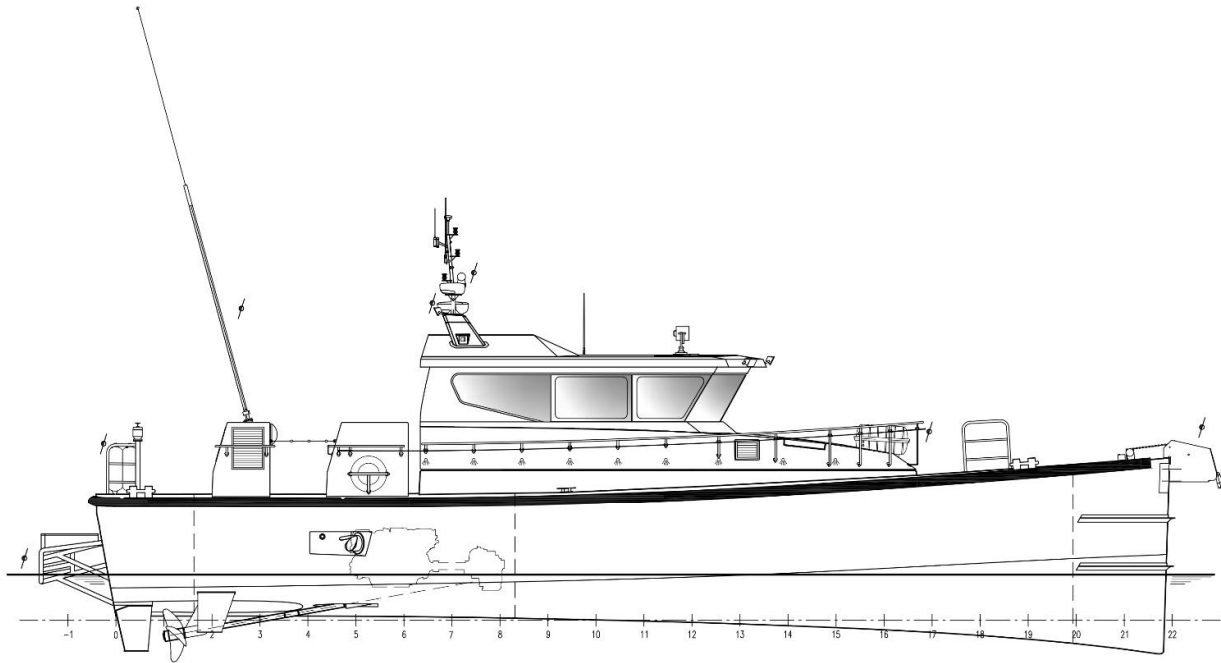
OPTIONAL

External communication GMDSS A1/A2
Second generator 22.5 ekW
Domestic network 115v, 60Hz
Slipway RHIB 4.8m
Navigator seat
Second searchlight
Second radar
Chart plotter/ECDIS
Autopilot
CCTV system
Night vision camera
Military equipment/ballistic protection

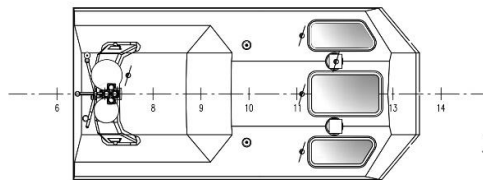
Stan Patrol 2205 FRP



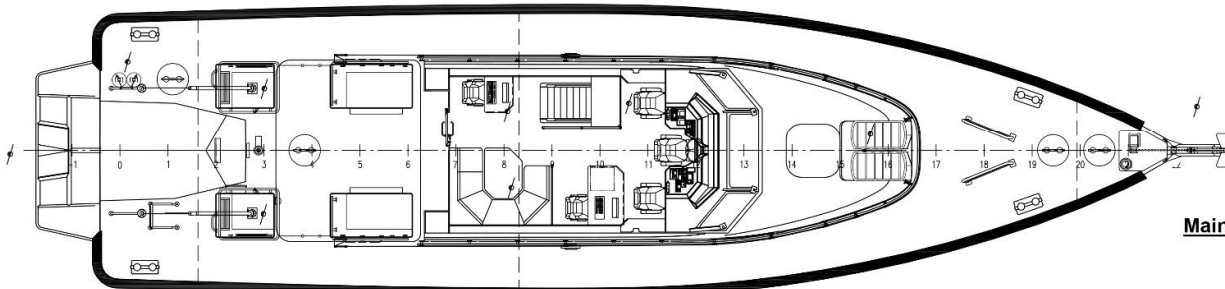
STANDARD



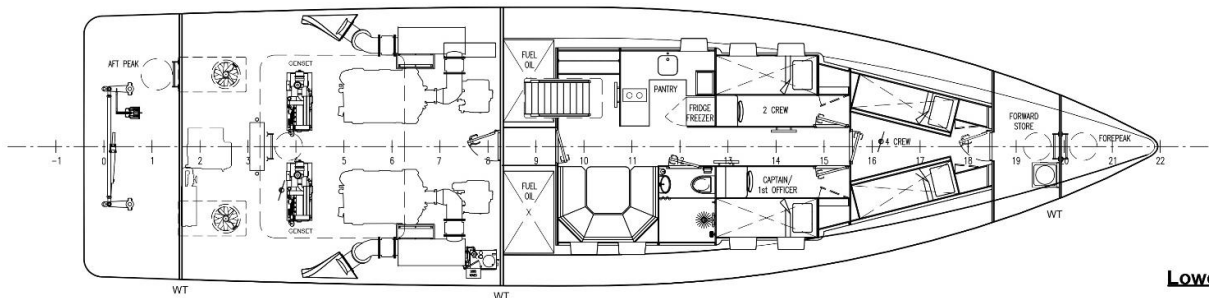
Profile



Top Deck



Main Deck



Lower Deck

DAMEN

Damen.com

©No part of the leaflet may be reproduced in any form, by print, photoprint, microfilm, or any other means, without written permission from Damen Shipyards Group