

Stan Patrol 1605 FRP

STANDARD



▶ PICTURE OF SIMILAR VESSEL

GENERAL

| | |
|-------------------------|--|
| Hull material | FRP |
| Superstructure material | FRP |
| Basic functions | Patrol, surveillance and safety duties |

DIMENSIONS

| | |
|------------------------|-----------------|
| Length overall | 15.7 m |
| Beam overall | 4.8 m |
| Depth at side | 2.0 m |
| Draught max | 0.8 m |
| Crew | Up to 2 persons |
| (Industrial) personnel | Up to 6 persons |

TANK CAPACITIES

| | |
|-------------|--------------------|
| Fuel oil | 1.7 m ³ |
| Fresh water | 0.3 m ³ |
| Sewage | 0.3 m ³ |

PERFORMANCES

| | |
|--------------------|---------|
| Speed | 33.0 kn |
| Range at max speed | 210 nm |

PROPULSION SYSTEM

| | |
|--------------|--------------|
| Main engines | 2x Volvo D13 |
| Total Power | 1,030 bkW |
| Gearboxes | 2x ZF 360 |
| Propulsion | 2x Waterjet |

ELECTRICAL EQUIPMENT

| | |
|----------------|-----------------------|
| Network | 24V DC, 230V 50 Hz AC |
| Generator sets | 9.5 ekW |

DECK LAY-OUT

| | |
|------------------|-----------------------------|
| Anchor equipment | 1x Fortress, chain and line |
| Fendering | D-fender 190x200 all around |

SHIP SYSTEMS

| | |
|-------------------------|---|
| General service pump | 1x electrically driven |
| Fire extinguishing | Hand operated fire extinguishers. Fixed fire-fighting system in engine room |
| Engine room ventilation | 5,300 m ³ /hr |

ACCOMODATION

| | |
|------------------|--|
| Main deck | Seats for industrial personnel |
| Below main deck | Bunks, pantry, settee and sanitary space |
| Air conditioning | 31,500 BTU/hr |

NAUTICAL AND COMMUNICATION EQUIPMENT

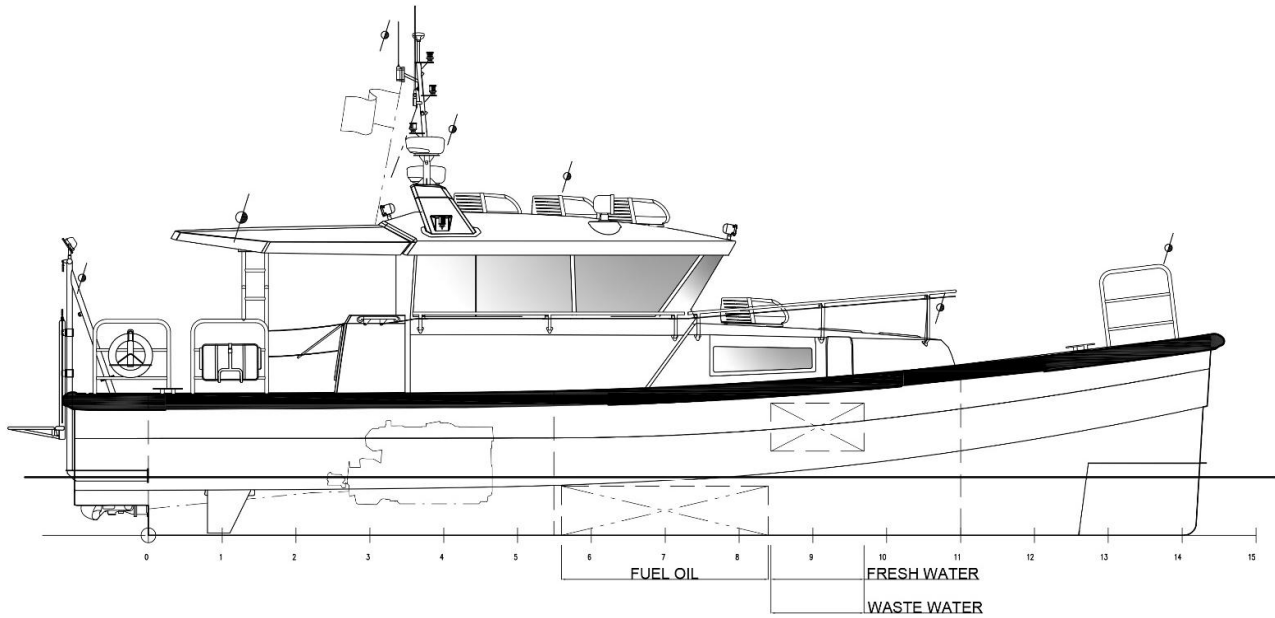
| | |
|---------------|-------------|
| Searchlight | 1x |
| Radar | 1x |
| Chart plotter | 1x |
| GPS | 1x |
| AIS | 1x |
| Compass | 1x Magnetic |
| Echo sounder | 1x |
| VHF | 1x |
| EPIRB | 1x |
| SART | 1x |

OPTIONAL

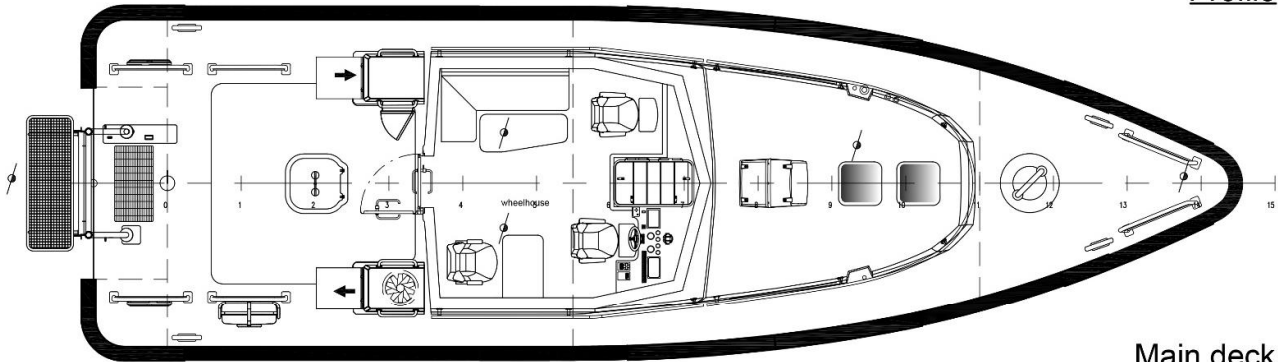
| | |
|------------------------|--|
| Classification | Bureau Veritas I ✱ Hull •MACH Light Ship / Fast Patrol Boat / Sea Area 3 |
| External communication | GMDSS A1 |
| MOB platform | Electric |
| Second generator | 9.5 ekW |
| Domestic network | 115V, 60 Hz |
| Extra air conditioning | 1 extra unit 10,500 BTU/hr |
| Navigator seat | |
| Extra pilot seats | 2 seats for in total 6 pilots |
| Shower | |
| Second radar | |
| Second searchlight | |
| Heading sensor | |
| VHF hand held | |
| Night vision camera | |

Stan Patrol 1605 FRP

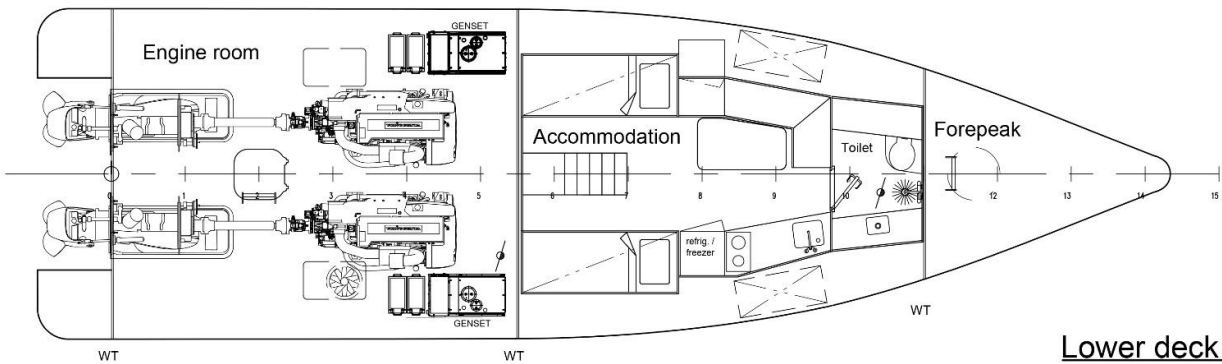
STANDARD



Profile



Main deck



Lower deck