



# FAST CREW SUPPLIER 7011

STOCK



## GENERAL

Yard number	547701
Hull material	Aluminium
Superstructure material	Aluminium
Basic functions	Fast Marine Access, Crew transfer
Classification	Bureau Veritas I ✕ Hull ✕ MACH, HSC-code-Cat A, Dynapos AM R, Sea Area 3

## DIMENSIONS

Length overall	73.6 m
Beam overall	11.2 m
Depth at side	5.5 m
Draught max.	4.5 m
Deadweight max	105.0 t
Cargo deck area (fore)	35.0 m <sup>2</sup>
Deck load	2.5 t/m <sup>2</sup>
Gross tonnage	1266
Crew	11 persons
(Industrial) personnel	120 persons

## TANK CAPACITIES

Fuel oil	70.0 m <sup>3</sup>
Fresh water	11.0 m <sup>3</sup>
Sewage	11.5 m <sup>3</sup>
Bilge water / dirty oil	6.0 m <sup>3</sup>

## PERFORMANCES

Speed	39.0 kn
Range at max speed	650 nm
Dynamic Positioning	Kongsberg DP2 ERN* (99,98,91,91)

## PROPULSION SYSTEM

Main engines	4x MTU 20V4000 M73L
Total Power	14,400 bkW
Gearboxes	4x Reintjes VLJ 1930
Propulsion	4x Waterjet Hamilton HT900
Bow thrusters	2x 426 kW, retractable 1x 250 kW, tunnel

## ELECTRICAL EQUIPMENT

Network	700V DC, 24V DC, 440V 60Hz AC, 400/230V 50Hz A.C.
Generator	4x 450 kW, main engine driven
Emergency generator set	1x 95 kW

## COMFORT ENHANCING EQUIPMENT

Roll reduction	1x Gyroscope, VEEM VG 1000
Ride control	Active Interceptors, Naiad Dynamics

## DECK LAY-OUT

Anchor equipment	1x HHP Pool TW, chain, electric winch
Davit and rescue craft	
Marine access system	Ampelmann motion compensated gangway, electro hydraulically driven hexapod, continuous access up to 18m above sea level

## SHIP SYSTEMS

Ship systems are according to Class	
Fuel filtration	2x Static filter system and pump
Engine room ventilation	2x Extraction fan, 36,000 m <sup>3</sup> /hr in total
Air-conditioning	785,000 BTU/hr
Fire extinguishing	Novec 1230 in engine room, sprinkler in accommodation

## ACCOMMODATION

Bridge deck	Wheelhouse
1 <sup>st</sup> Deck	Personnel area, kiosk and lounge, lobby
Main deck	Personnel area, 2x crew cabin, mess/pantry, technical spaces
Lower deck	5x Crew cabin, technical spaces, stores
Seats	Business class reclinable seats, pitch 1.4 m
Entertainment system	Media server with 9 screens, Wi-Fi

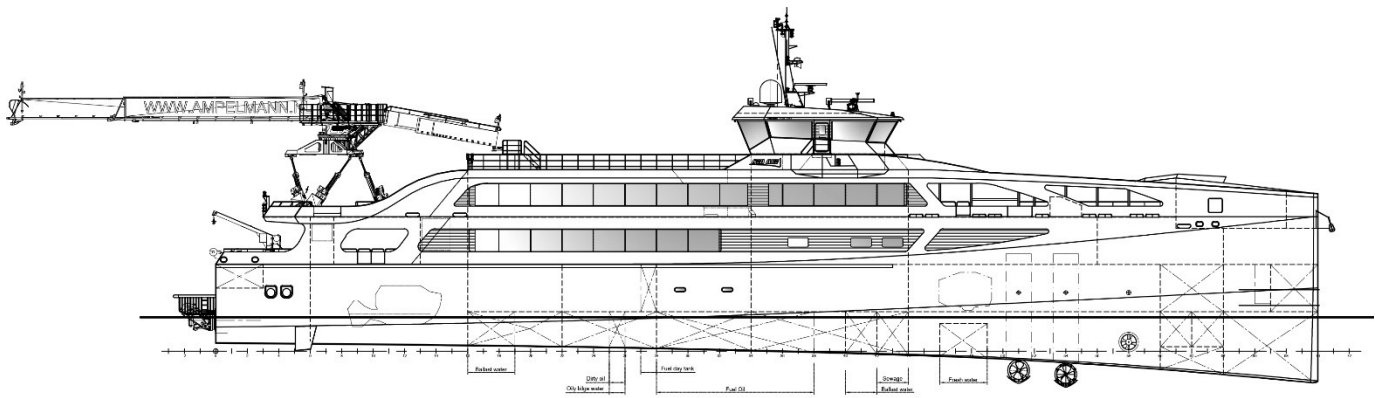
## NAUTICAL AND COMMUNICATION EQUIPMENT

Integrated navigation system	
Remote monitoring system	
Searchlight	2x
Radar	1x X-band, 1x S-band
Electronic chart	Dual ECDIS
DGPS	2x
AIS	1x
Compass	3x Gyro
Autopilot	1x
Night vision camera	1x HSC approved
Echo sounder	1x
Speedlog	1x
Reference radar	1x Kongsberg Spot track laser
Internal communication	Intercom and public address system
CCTV system	1x
External communication	GMDSS A2
Satellite data comm.	1x V-Sat
Wind measurement sys.	3x

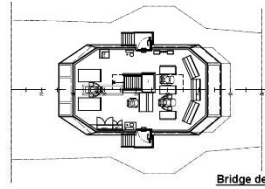
## OPTIONAL

Personnel accomm.	Alternative arrangement and seat types
External communication	GMDSS A3
Data communication	Iridium, 2 <sup>nd</sup> V-Sat, Fleet broadband, 4G
Transfer basket	1x, up to 10 persons
Cold store	
Sewage treatment plant	

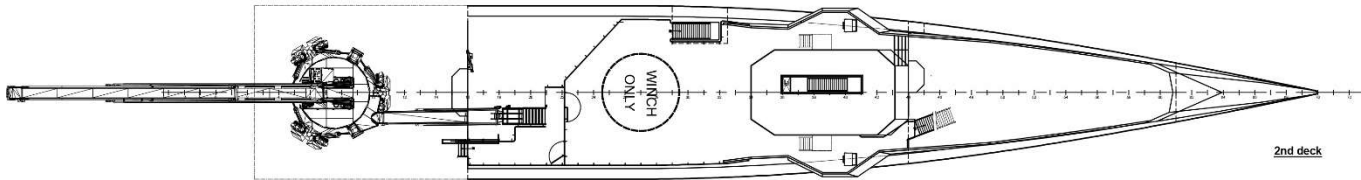
# DAMEN



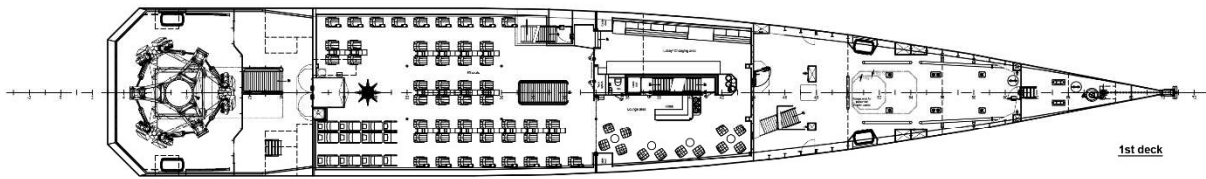
Profile



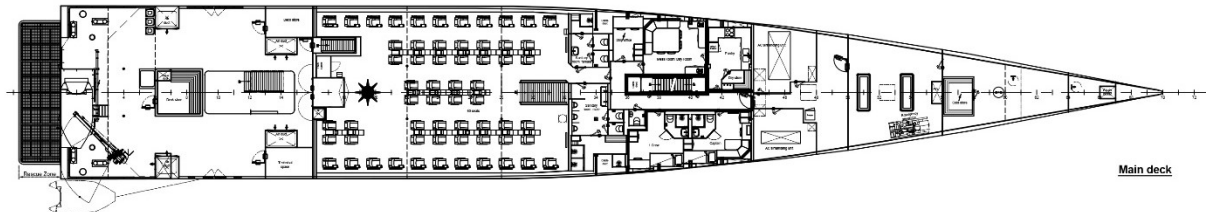
Bridge deck



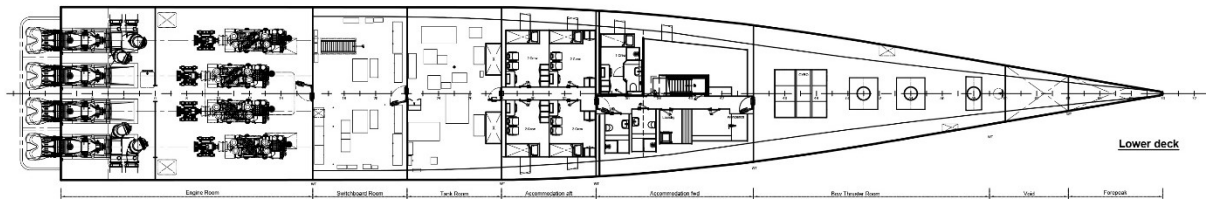
2nd deck



1st deck



Main deck



Lower deck

# FAST CREW SUPPLIER 7011

STOCK

## DAMEN

DAMEN SHIPYARDS GROUP

Avelingen-West 20  
4202 MS Gorinchem  
The Netherlands

P.O. Box 1  
4200 AA Gorinchem  
The Netherlands

phone +31 (0)183 63 99 22  
fax +31 (0)183 63 21 89

info@damen.com  
[www.damen.com](http://www.damen.com)

© No part of the leaflet may be reproduced in any form, by print, photo print, microfilm, or any other means, without written permission from Damen Shipyards Group