

Fast Crew Supplier 7011

STANDARD



PICTURE OF SIMILAR VESSEL

GENERAL

Hull material	Aluminium
Superstructure material	Aluminium
Basic functions	Fast Marine Access, Crew transfer
Classification	Bureau Veritas 1 ✳ Hull ✳ MACH, HSC-code-Cat A, Dynapos AM, Sea Area 3

DIMENSIONS

Length overall	73.6 m
Beam overall	11.2 m
Depth at side	5.5 m
Draught max	4.5 m
Deadweight max	Up to 105.0 ton
Cargo deck area (fore)	35.0 m ²
Deck load	2.5 t/m ²
Gross tonnage	1276
Crew	Up to 12 persons
(Industrial) personnel	Up to 200 persons

TANK CAPACITIES

Fuel oil	70.0 m ³
Fresh water	11.0 m ³
Sewage	11.5 m ³
Bilge water/ dirty oil	6.0 m ³

PERFORMANCES

Speed	27-40 kn
Range	650-800 nm
DP	Up to DP2ENR* (99,98,91,91)

PROPULSION SYSTEM

Main engines	4x MTU / Caterpillar
Total Power	8,000-14,400 bkW
Gearboxes	4x Reintjes VLJ type
Propulsion	4x Waterjet
Bow thrusters	1x or 2x 426 ekW, retractable 1x or 2x 250 ekW, tunnel

ELECTRICAL EQUIPMENT

Network	700-750V DC, 24V DC, 440V 60Hz AC, 400/230V 50Hz AC
Generator	Up to 4x 450 ekW, main engine driven
Emergency generator set	1x 95 ekW

COMFORT ENHANCING EQUIPMENT

Roll reduction	1x Gyroscope, VEEM VG 1000
Ride control	Active Interceptors, Naiad Dynamics

DECK LAY-OUT

Anchor equipment	1x HHP Pool TW, chain, electric winch
Davit and rescue craft	
Prepared to receive a marine access system and a transfer basket	

SHIP SYSTEMS

Ship systems are according to Class	
Fuel filtration	2x Static filter system and pump
Engine room ventilation	2x Extraction fan, 36,000 m ³ /hr in total
Air-conditioning	Up to 785,000 BTU/hr
Fire extinguishing	Fixed gas-flooding system in engine room, sprinkler system in accommodation, manually operated fire extinguishers

ACCOMMODATION

Bridge deck	Wheelhouse
1 st Deck	Personnel area, bar and lounge, lobby
Main deck	Personnel area, crew cabins, mess/pantry, technical spaces
Lower deck	Crew cabins, technical spaces, stores
Seats	Luxurious (fully) reclinable seats, pitch 1.0-2.0 m

NAUTICAL AND COMMUNICATION EQUIPMENT

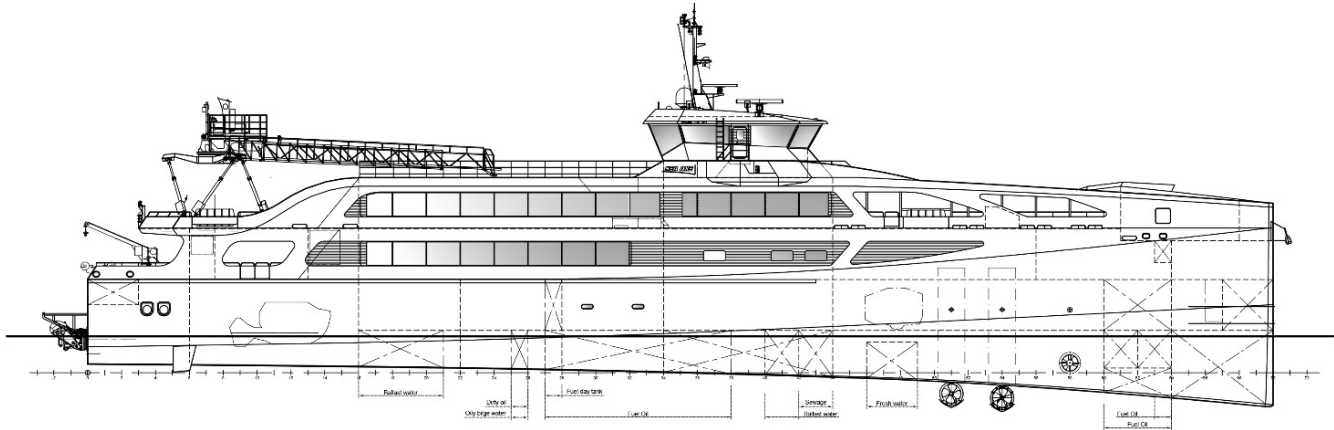
Integrated navigation system	
Remote monitoring system	
Searchlight	2x
Radar	1x X-band, 1x S-band
Electronic chart	Dual ECDIS
DGPS	2x
AIS	1x
Compass	1x Magnetic, 2x gyro
Autopilot	1x
Night vision camera	1x HSC approved
Echo sounder	1x
Speedlog	1x
Internal communication	Intercom and public address system
CCTV	1x
External communication	GMDSS A2

OPTIONAL

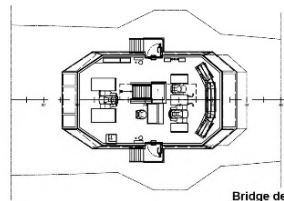
Marine access system	Fully integrated motion compensated gangway, continuous access
DP system	DP 2, including reference systems, bow thruster configuration
Classification	HSC-code-Cat B, Dynapos AM R (DP2)
Seat type	Reclinable marine seats up to fully reclinable first class seats
Entertainment system	Video and music on demand, Wi-Fi
Transfer basket	1x, up to 10 persons
Data communication	Iridium, V-SAT, Fleet broadband, 4G
Cold store	
Sewage treatment plant	

Fast Crew Supplier 7011

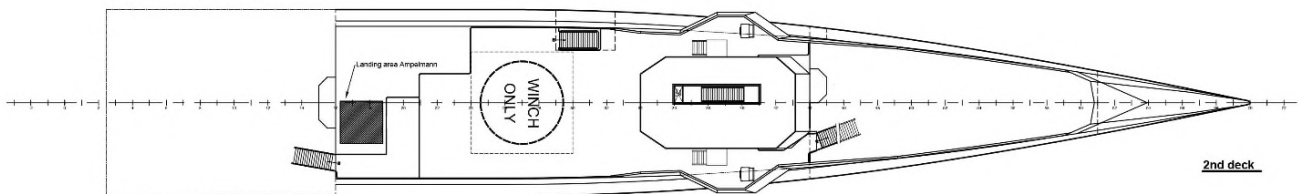
STANDARD



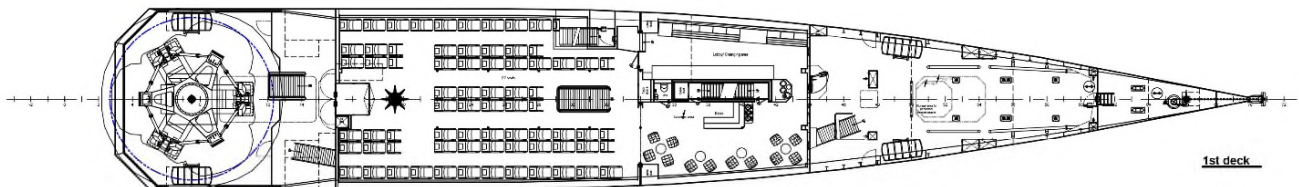
Profile



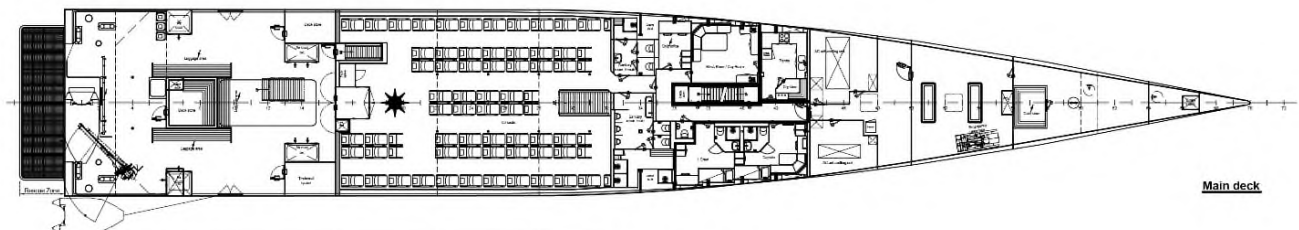
Bridge deck



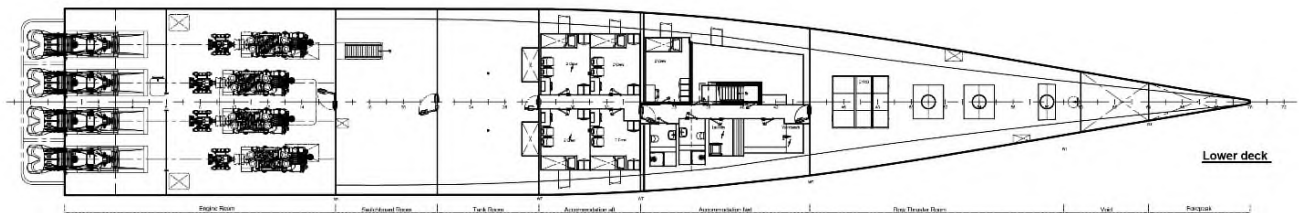
2nd deck



1st deck



Main deck



Lower deck

DAMEN

Damen.com

© No part of the leaflet may be reproduced in any form, by print, photoprint, microfilm, or any other means, without written permission from Damen Shipyards Group