



## DAMEN FAST CREW SUPPLIER® 5009

**"EDT LEON"**

### GENERAL

YARDNUMBER	547205
OWNER	EDT Shipmanagement Ltd
DATE OF DELIVERY	February 2011
HULL MATERIAL	Steel
SUPERSTRUCTURE	Aluminium
BASIC FUNCTIONS	Fast supplier, crew boat
CLASSIFICATION	Bureau Veritas I * Hull • MACH, • DYNAPOS AM. Special Service/ Fast Crew Supplier, Unrestricted Service

### DIMENSIONS

LENGTH O.A.	51.30 m
BEAM O.A.	9.90 m
DEPTH AT SIDES	4.70 m
DRAUGHT MAX	3.20 m

### CAPACITIES

FUEL OIL	169.00 m <sup>3</sup>
FRESH WATER (DOM)	8.00 m <sup>3</sup>
FRESH WATER (CARGO)	193.00 m <sup>3</sup>
DIRTY OIL	1.50 m <sup>3</sup>
BILGE WATER	1.50 m <sup>3</sup>
SEWAGE	1.00 m <sup>3</sup>
CARGO DECK AREA	225 m <sup>2</sup>
MAX. DECK LOAD	2.5 t/m <sup>2</sup>
CREW	8 persons
INDUSTRIAL PERSONNEL	80 persons

### PERFORMANCES

SPEED (TRIAL)	25.5 knots at 28.9 tonnes DW
---------------	------------------------------

### PROPULSION SYSTEM

MAIN ENGINES	4 x Caterpillar 3512B TA, A
TOTAL POWER	4472 kW (6000 bhp) at 1600-1800
GEARBOXES	4 x Reintjes ZWVS 730
PROPULSION	4 x Fixed pitch propellers
BOWTHRUSTERS	2 x 75 bkW, electrically driven

### ELECTRICAL EQUIPMENT

NETWORK	240V / 415V, 60 Hz
GENERATOR SETS/ CAPACITY	3 x Caterpillar 6.6/ 3 x 99 ekW

### DECK LAY-OUT

ANCHOR EQUIPMENT	1 x 184 kg H.H.P.
AFT DECK	Wood covering on the aft deck

### LIFE SAVING EQUIPMENT

LIFE BUOYS	6
LIFE JACKETS	90
LIFE RAFTS	6 x 25 persons
FIRE FIGHTING INTERNAL	Fixed system in E.R.

### AUXILIARY EQUIPMENT

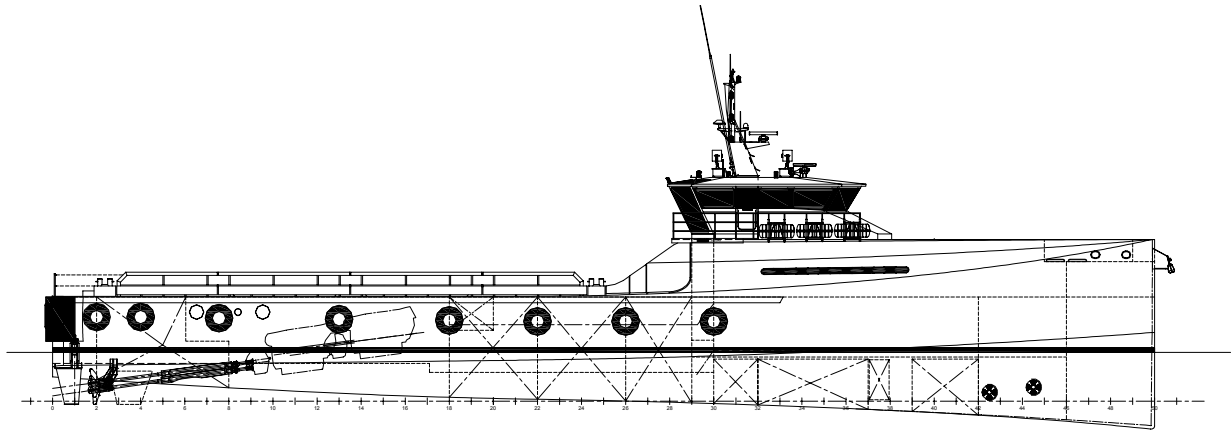
ENGINE ROOM VENTILATION	72,000 m <sup>3</sup> / hr
BILGE PUMPS	25 m <sup>3</sup> / hr @ 3.8 bar
BILGE WATER SEPERATOR	Facet, CPS-2.5 mk II + EBM 14X
DYNAMIC FUEL SEPERATOR	Weastfalia, OTC 3-02-137
SEWAGE TREATMENT PLANT	Hamann, Mini Norway
CARGOPUMP (F.W.)	70 m <sup>3</sup> / hr @ 60m head
CARGOPUMP (FUEL)	70 m <sup>3</sup> / hr @ 60m head

### ACCOMODATION

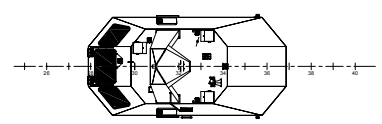
BELOW MAIN DECK	Crew cabins, pantry and mess room
MAIN DECK	80 Seats for industrial personnel
AIR CONDITIONING	Air Conditioning in wheelhouse and accommodation

### NAUTICAL, SURVEILLANCE AND COMMUNICATION EQUIPMENT

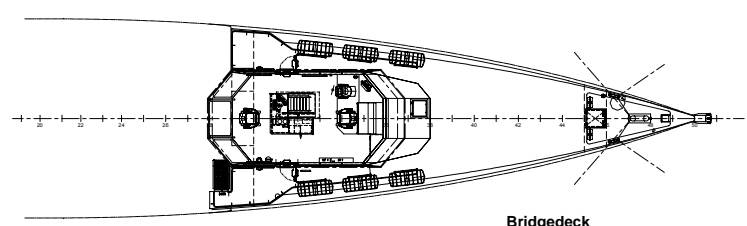
SEARCHLIGHTS	3 x 1000W MP Pesch
RADARS	2 x JRC, JMA 5206
MAGNETIC COMPASS	Ritchie, HB 71
DGPS	2 x Veripos, LD3-G1
ECHO SOUNDER	Alphatron, Alphadeoth
VHF'S	2 x Sailor, RT5022
VHF'S HANDHELD	2 x Sailor, 3520
MF / HF	Sailor, 5000
GPS COMPASS	JRC, JRL-20
NAVTEX	JRC, NCR-333
EPIRB	McMurdo E5 Auto
SART	McMurdo S4
AIS	JRC, JHS-182
AUTOPILOT	Alphatron, Alphaseapilot
WINDMETERSET	2 x Maretron, WSO 100
GYRO COMPASS	2 x Alphatron, Alphamini course
DYNAMIC POSITIONING	Alphatron / Navis, (Dynapos AM)



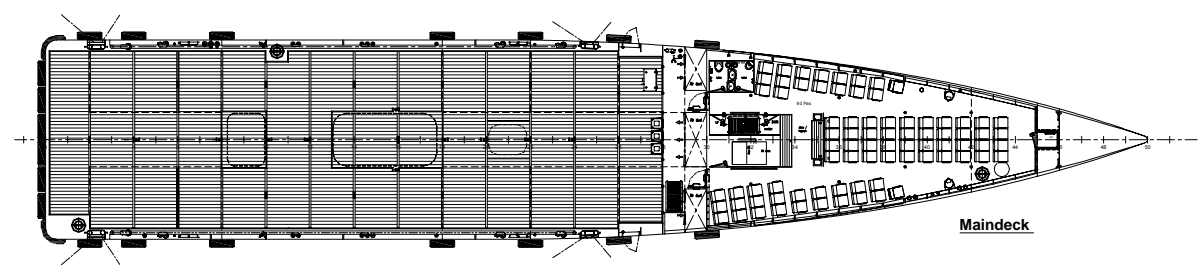
Profile



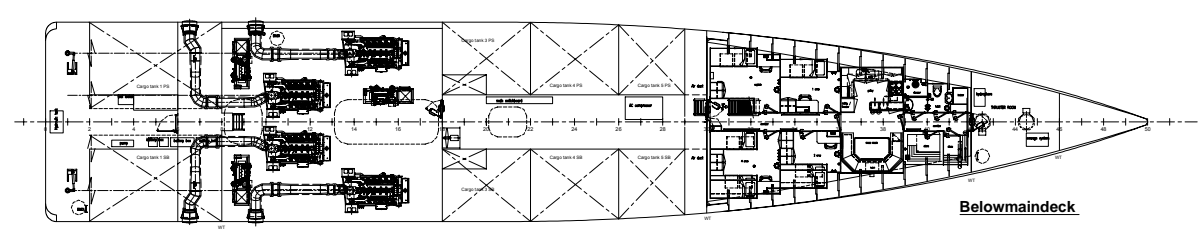
Top of Wheelhouse



Bridgedeck



Maindeck



Belowmaindeck

# DAMEN FAST CREW SUPPLIER<sup>®</sup> 5009

"EDT LEON"



DAMEN SHIPYARDS GORINCHEM

Member of the DAMEN SHIPYARDS GROUP



Industrieterrein Avelingen West 20  
4202 MS Gorinchem

P.O. Box 1  
4200 AA Gorinchem  
The Netherlands

phone +31 (0)183 63 99 11  
fax +31 (0)183 63 21 89

info@damen.nl  
www.damen.nl