



## DAMEN FAST CREW SUPPLIER® 3307

**"SVS DAMPIER" - "SVS MONCK"**

### GENERAL

YARD NUMBER	544816+17
DELIVERY DATE	August 2011
HULL MATERIAL	Aluminium
SUPERSTRUCTURE	Aluminium
BASIC FUNCTIONS	Maritime Safety
CLASSIFICATION	Bureau Veritas
	I ✳ Hull • MACH
	Light ship/ Crew boat, Sea Area 3
FLAG	SVG

### DIMENSIONS

LENGTH O.A.	33.32 m
BEAM O.A.	7.35 m
DEPTH AT SIDES	3.30 m
DRAUGHT AFT	2.90 m

### TANK CAPACITIES

FUEL OIL	46.70 m <sup>3</sup>
FRESH WATER (DOMESTIC)	18.70 m <sup>3</sup>
WASTE WATER	2.40 m <sup>3</sup>

### PERFORMANCES (TRIALS)

SPEED	26.1 kn
-------	---------

### PROPULSION SYSTEM

MAIN ENGINES	3 x Caterpillar C32 TTA (WOSR) – B rating
TOTAL POWER	2460 bkW (3300 bhp) at 1900-2100 rpm
GEARBOXES	Reintjes WVS 430/1
PROPELLERS	Fixed-pitch propellers

### ELECTRICAL EQUIPMENT

GENERATOR SET	2 x Caterpillar C4.4 T
CAPACITY	58.5 kW / 73.0 kVA
SHORE CONNECTION	63 A – 415V- 60 Hz.

### AUXILIARY EQUIPMENT

E.R. VENTILATION	Axial flow fan – 60.000m
BOWTHRUSTER	1 x 75 kW, hydraulic

### DECK LAY-OUT

ANCHOR EQUIPMENT	1 x 79 kg H.H.P. Pool.
ANCHOR WINCH	Muir VR 4000 elec.
FENDERING AT THE SIDE/STERN	Aluminium fender and additional tyre fenders
FENDERING TRANSOM CORNERS	Ø 300x150x1200 mm

### LIFE SAVING EQUIPMENT

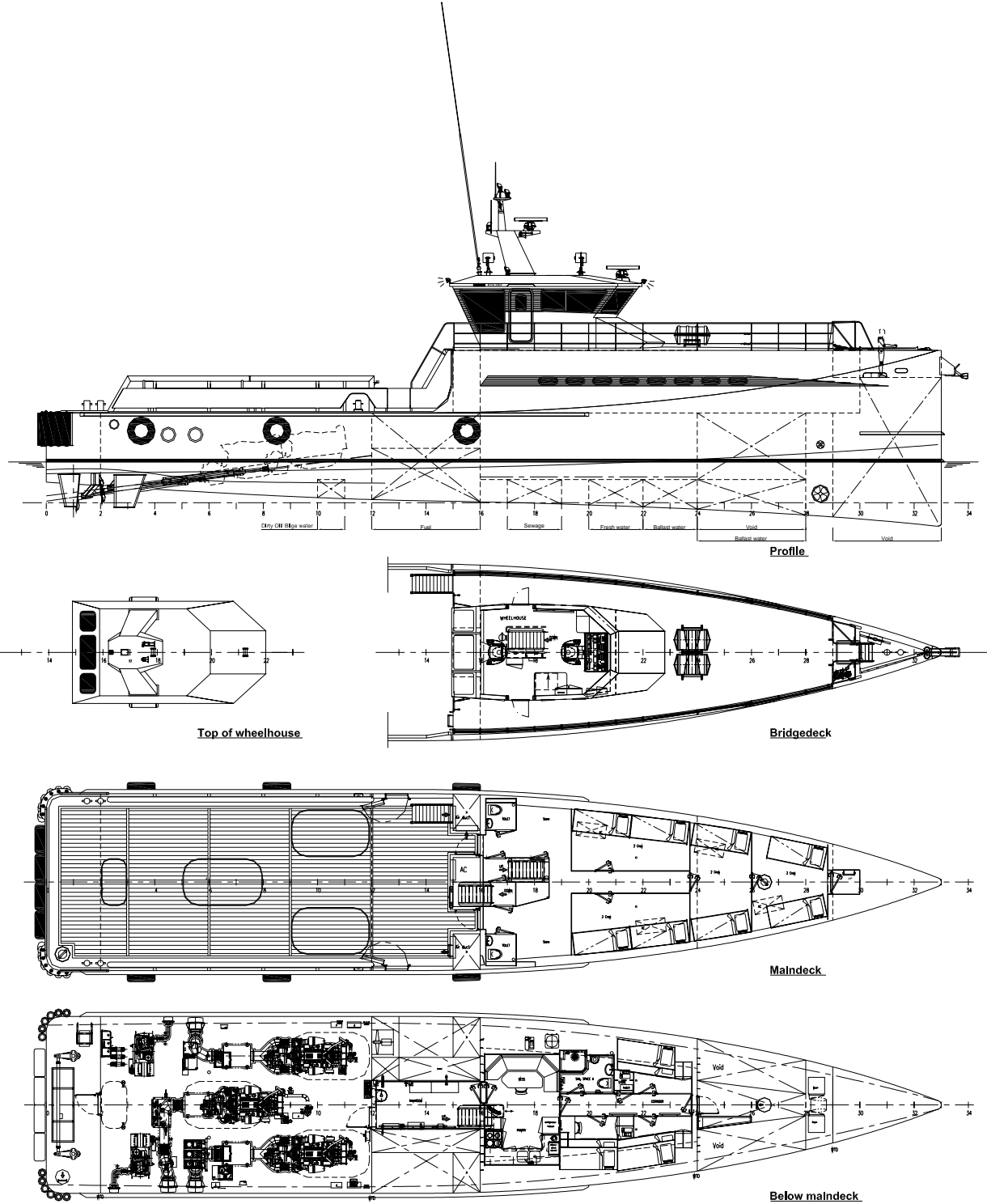
LIFE BUOYS	6
LIFE JACKETS	14
EVACUATION SYSTEM	2x life raft 25 persons
EPIRB/SART	McMurdo

### ACCOMMODATION

PASSENGERS	75 persons
CREW	6 persons
CREW CABINS	7 x 2 persons
BELOW MAIN DECK	Settee, galley, cabins, sanitary space
MAINDECK	Cabins, sanitary spaces, store
AIR-CONDITIONING	Provided in wheelhouse and accommodation (reverse cycle mode)

### NAUTICAL AND COMMUNICATION EQUIPMENT

MAIN RADAR	JRC JMA 5206-4 HS
BACKUP RADAR	JRC JMA 5206-4 HS
SEARCHLIGHT	1 x 220 V 500 W
MAGNETIC COMPASS	Cassens & Plath T12
GPS COMPASS	JRC JLR 4340
GPS	JRC NWZ 4551
ECHOSOUNDER	JRC JFE 380
HF/VHF/DSC	Sailor
CHART PLOTTER	C - MAP
ANEMOMETER	Alphawind WSO 100
AIS	JRC JHS 182
HEADING SENSOR	ALPHACOURSE SSC-200-01
AUTOPILOT	Alphatron - AlphaSeaPilot
NAVTEX	JRC NCR-333



# DAMEN FAST CREW SUPPLIER<sup>®</sup> 3307

"SVS DAMPIER" - "SVS MONCK "

## DAMEN

DAMEN SHIPYARDS GORINCHEM

Member of the DAMEN SHIPYARDS GROUP



Industrieterrein Avelingen West 20  
4202 MS Gorinchem

P.O. Box 1  
4200 AA Gorinchem  
The Netherlands

phone +31 (0)183 63 99 11  
fax +31 (0)183 63 21 89

info@damen.nl  
www.damen.nl