



# FAST CREW SUPPLIER 1605 FRP

## STANDARD

### GENERAL

Hull material	FRP
Superstructure material	FRP
Basic functions	Crew and cargo duties

### DIMENSIONS

Length overall	16.0 m
Beam overall	4.8 m
Depth at side	2.0 m
Draught max	0.8 m
Deck cargo	2.0 t
Crew	1 person
(Industrial) personnel	Up to 29 persons

### TANK CAPACITIES

Fuel oil	1.8 m <sup>3</sup>
Fresh water	0.3 m <sup>3</sup>
Sewage	0.3 m <sup>3</sup>

### PERFORMANCES

Speed	29.0 kn
Range at max speed	210 nm

### PROPULSION SYSTEM

Main engines	2x Volvo D13
Total Power	882 bkW
Gearboxes	2x ZF 360
Propulsion	2x Waterjet

### ELECTRICAL EQUIPMENT

Network	24 V DC, 230V,50 Hz AC
Generator set	9.5 ekW

### DECK LAY-OUT

Anchor equipment	1x Fortress, chain and line
Fendering	D-fender 190 x 200 at main deck level

### SHIP SYSTEMS

General service pump	1x electrically driven
Engine room ventilation	5,300 m <sup>3</sup> /hr
Fire extinguishing	Hand operated fire extinguishers. Fixed fire-fighting system in engine room
Air conditioning	31,500 BTU/hr

### ACCOMMODATION

Main deck	Helmsman seat, seats for industrial personnel and sanitary space
-----------	--

### NAUTICAL AND COMMUNICATION EQUIPMENT

Searchlight	1x
Radar	1x
Chart plotter	1x
GPS	1x
AIS	1x
Compass	1x Magnetic
Echo sounder	1x
VHF	1x
EPIRB	1x
SART	1x

### OPTIONAL

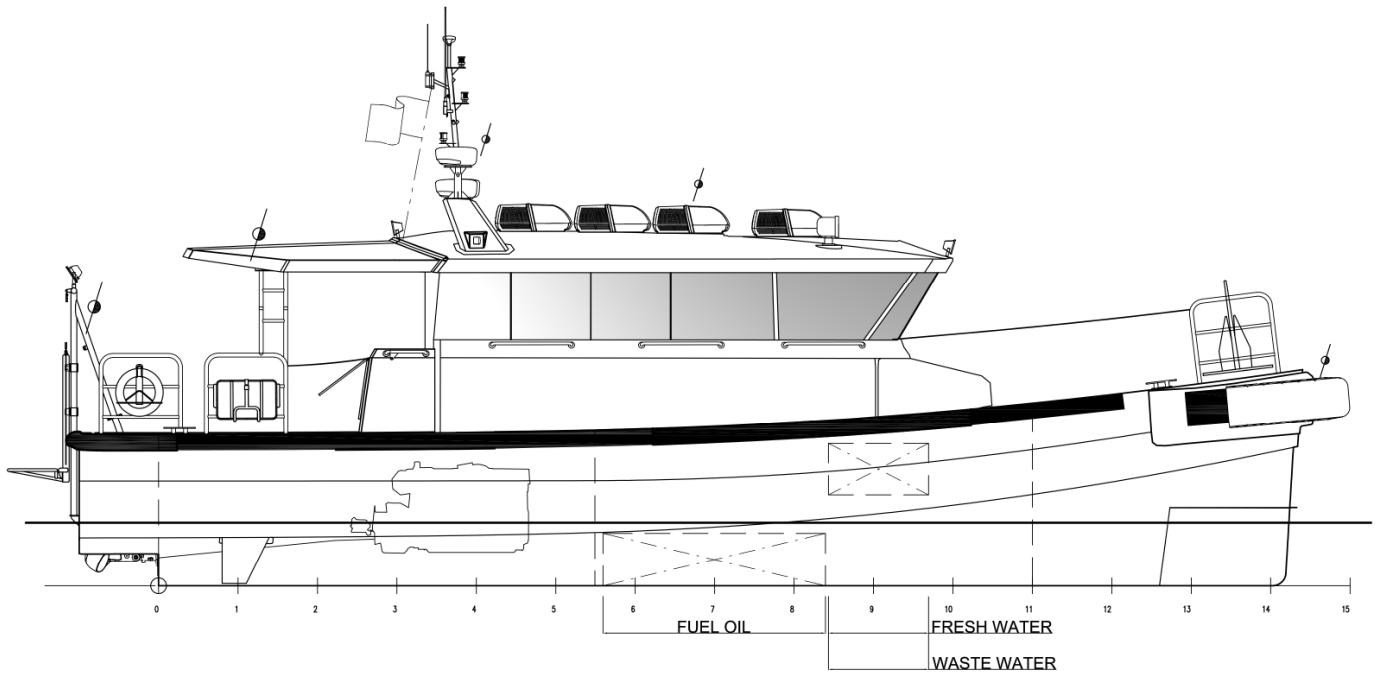
Classification	Bureau Veritas I ✕ Hull •MACH Crew boat Sea Area 3 GMDSS A1
External communication	GMDSS A1
Bowfender	Foam filled landing module
Side fender	D-fender 190 x 200 all around
Extra Air conditioning	1 extra unit 10,500 BTU/hr
MOB recovery system	Electric
Navigator seat	
Second generator	9.5 ekW
Domestic network	115v, 60 Hz AC
Second radar	

### PROPULSION VARIANTS

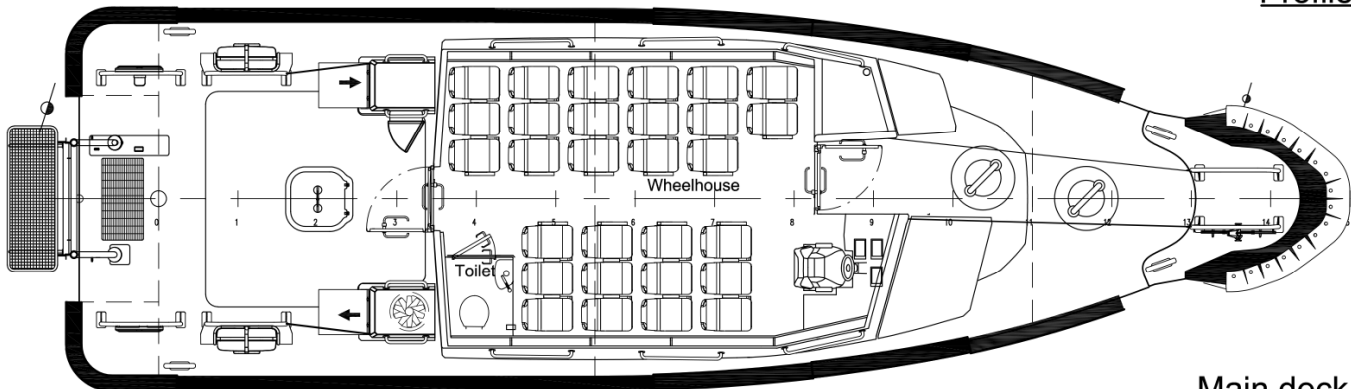
Fixed pitch propellers

# FAST CREW SUPPLIER 1605 FRP

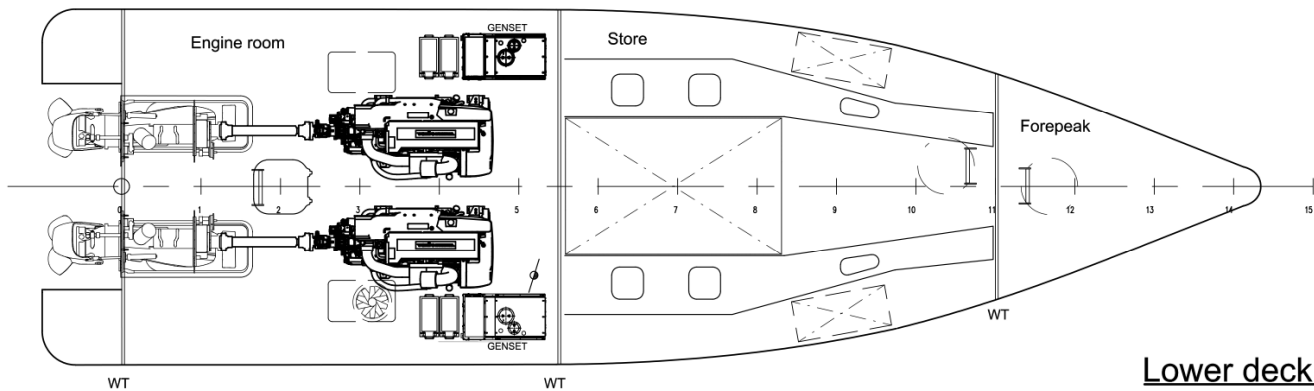
STANDARD



**Profile**



**Main deck**



**Lower deck**

**DAMEN**

Items marked with  are optional equipment

DAMEN SHIPYARDS GROUP

Avelingen-West 20  
4202 MS Gorinchem  
The Netherlands

P.O. Box 1  
4200 AA Gorinchem  
The Netherlands

phone +31 (0)183 63 99 22  
fax +31 (0)183 63 21 89

info@damen.com  
[www.damen.com](http://www.damen.com)

© No part of the leaflet may be reproduced in any form, by print, photo print, microfilm, or any other means, without written permission from Damen Shipyards Group