



DAMEN LOAD OUT RECOVERY BARGE 1300

"YN 551015"

GENERAL

Yard number	551015
Basic functions	The Damen Load Out Recovery Barge is a drydock built in steel to standard design.
Description	Load out and recovery of new built vessels
Classification	Lloyd's Register ⚓ A, "Floating Dock" for the service of Port Ras Lafhan

DIMENSIONS (drydock)

Length o.a.	140.0 m
Beam o.a.	35.0 m
Depth to upper deck	16.0 m
Depth to drydock floor	6.0 m
Max draught	15.0 m
Min Freeboard to upper deck (when fully submerged)	1.0 m
Min Freeboard to dock floor (with 13.031t load)	0.44 m
Length over keel blocks	140.0 m
Internal width at upper deck level	25.0 m
Internal width at dock floor level	25.0 m

CAPACITIES

Fuel	10.0 m ³
Fresh water (loose tank)	1.0 m ³
Waste water	10.0 m ³
Sewage	1.0 m ³
Sludge	5.0 m ³
Max. lifting capacity (0,44m freeboard to dock floor)	13.031 t

BALLAST SYSTEM

Ballast volume	26500 m ³
No of ballast pumps	4 pcs
Total ballast cap (approx.)	5400 m ³ /h

DECK LAY-OUT

Rotating spud	1 pcs
Removable wingwall	4 pcs

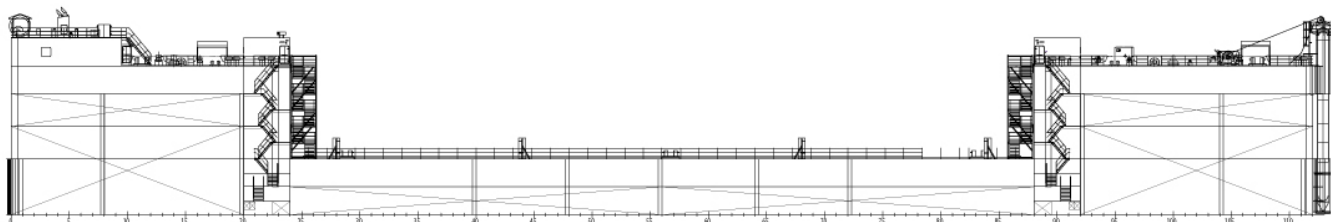
CONTROL ROOM

Control Room equipment	Ballast tank level system, Ballast control panel, Alarm panel, E-switchboard
Drydocking equipment	Deflection monitoring & alarm system, List & Trim monitors.
Standard equipment	VHF radio, binoculars, barometer
Other standard equipment	AC unit, charger for handheld VHF, charger for Crane Remote, first aid kit, fire extinguisher, life buoy with line.

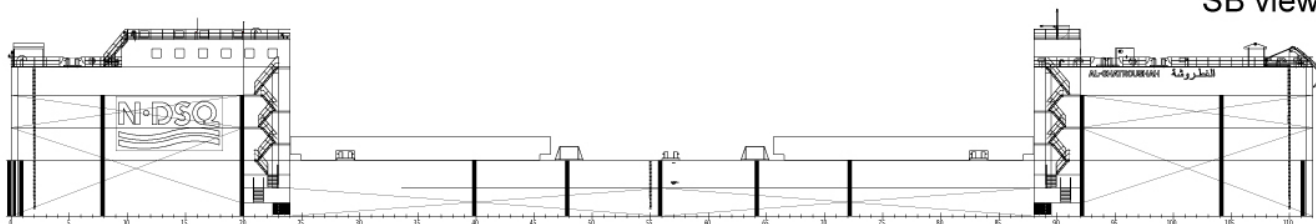
FIRE FIGHTING SYSTEM

No. of fifi pumps	2 pcs
Fifi pump capacity, each	25 m ³ @80mwc
No. of hydrants upper deck	10 pcs
No. of hydrants dock floor	12 pcs
Fifi piping hot dip galvanised	100 %

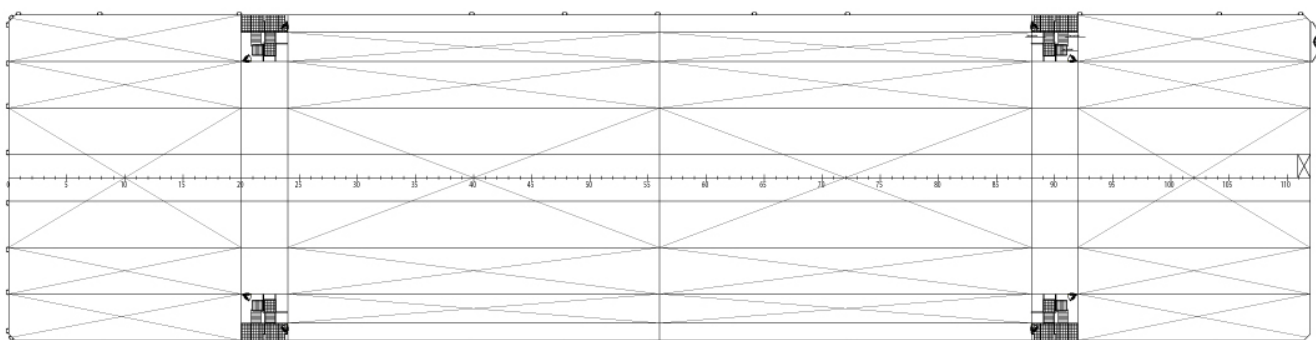
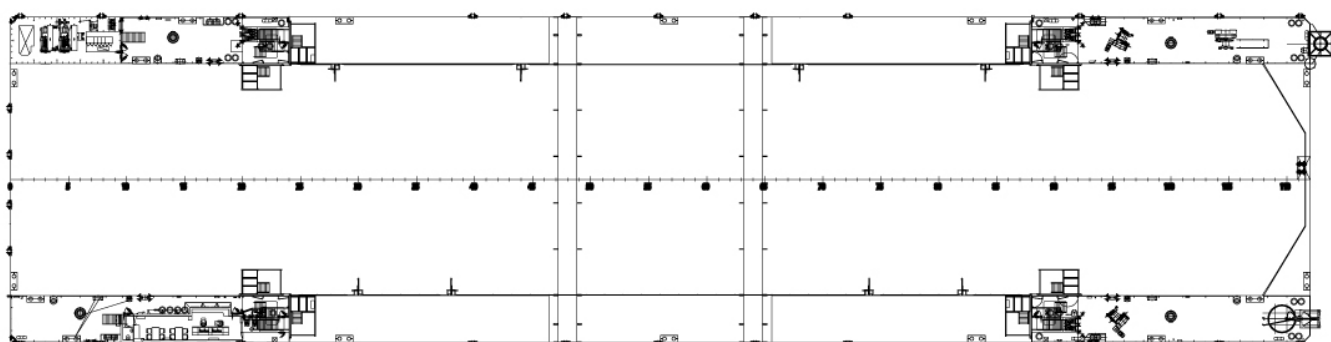
PS view



SB view



Top view



DAMEN LOAD OUT RECOVERY BARGE 13000

"YN 551015"



DAMEN SHIPYARDS GORINCHEM

Member of the DAMEN SHIPYARDS GROUP 

Industrieterrein Avelingen West 20
4202 MS Gorinchem

P.O. Box 1
4200 AA Gorinchem
The Netherlands

phone +31 (0)183 63 99 11
fax +31 (0)183 63 21 89

info@damen.com
www.damen.com