



# SEA FISHER 2007

## SHRIMPER

### GENERAL

Functions	Stern trawling with doors, suited for pelagic trawling and bottom trawling and fitted with a refrigerated fish hold for storage of the catch
Classification	Hull built to Bureau Veritas (no certificate) or equivalent I • HULL Fishing Vessel- Coastal Waters

### DIMENSIONS

Length o.a.	20.10 m
Length b.p.p.	18.65 m
Beam mld.	7.00 m
Depth at side (base)	3.75 m
Draught aft (approx.)	3.10 m

### TANK CAPACITIES

Fuel oil (service)	18.0 m <sup>3</sup>
Fresh water (service)	8.0 m <sup>3</sup>
Lubrication oil	1.0 m <sup>3</sup>
Bilge water	2.0 m <sup>3</sup>
Dirty oil	1.0 m <sup>3</sup>
Sewage	2.0 m <sup>3</sup>

### FISH HOLD CAPACITY

Fish hold (insulated)	85 m <sup>3</sup>
-----------------------	-------------------

### PERFORMANCES (APPROX.)

Speed (at design draught)	8.5 kn
Pull (at 4 kn speed)	5.0 t

### PROPULSION SYSTEM

Main engine	Volvo D 16 MH
Propulsion power	442 kW (600 bhp) @ 1800 rpm
Gearbox	Reverse reduction, ratio 5.050:1
Propeller	1600 mm FPP in a nozzle
Rudder	Balance streamlined double plate

### AUXILIARY EQUIPMENT

Networks	230/400 V 50 Hz
Generator set	Caterpillar C1.5 NA, 10.7 kW / 13.4 kVA
Hydraulics for deck equip.	HPU, driven by PTO on the gearbox

### DECK LAY-OUT

Anchor to be used with the warp	175 kg Pool (High Holding Power)
Booms	The vessel will be equipped for double rig shrimp trawling by means of two outriggers. At the end of the outriggers trawl blocks are fitted. A steel center boom will be connected to the main mast
Center boom	One winch will be mounted on the main deck, equipped with two wire drums, pull 3 tons per drum
Shrimp trawl winch	Two bins mounted on the main deck aft.
Fish receiving bins	One on the forecastle deck, 5 persons
Life raft	

### REFRIGERATION / FREEZING

The fish hold is refrigerated to control the melting rate of shore supplied ice

### ACCOMMODATION

A ventilated accommodation for 5 persons, completely insulated and finished with durable modern linings. The accommodation includes 3 cabins, a galley mess room, a sanitary space and a changing room. The wheelhouse is compact has a Dampa ceiling and offers an unobstructed view in all directions.

### NAUTICAL, COMMUNICATION, FISH FINDING EQUIPMENT

External communication	2x VHF, Navtex, AIS, SART, EPRIB
Internal communication	Intercom
Nautical systems	Compass, radar, GPS, echo sounder
Fish finding systems	Colour fish finder

### OPTIONS

Classification	I ✱ HULL • MACH Fishing Vessel-Coastal Waters
Increased generating power	CaterpillarC-4.4 TA, 69ekW/86 kVA for power consumers
Anchor winch	Electrically driven, with cable drum
Refrigeration / freezing	Flake ice machine Blast freezing-40°C in combination with Fish hold freezing - 25°C
External communication	SSB

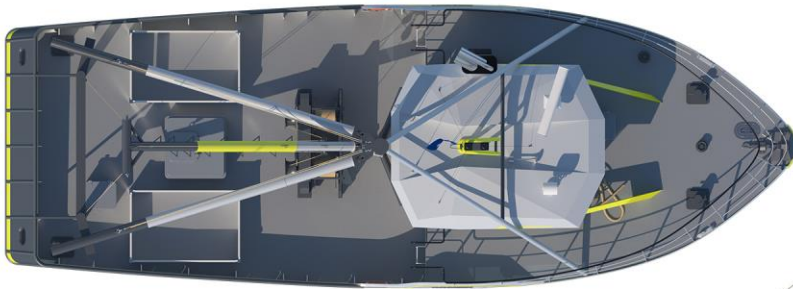
### FREEZING / REFRIGERATION

Fish hold refrigeration	0 °C (auxiliary load 3 kW)
Ø Flake ice machine	1100 kg /24 hours (auxiliary load 8 kW)

All data presented is preliminary and is subject to change without prior notice. Artist impressions and general arrangement plan may show optional equipment. Options may impact performances.

# SEA FISHER 2007

## SHRIMPER



# DAMEN

DAMEN SHIPYARDS GROUP

Avelingen-West 20  
4202 MS Gorinchem  
The Netherlands

P.O. Box 1  
4200 AA Gorinchem  
The Netherlands

phone +31 (0)183 63 99 22  
fax +31 (0)183 63 21 89

info@damen.com  
[www.damen.com](http://www.damen.com)

© No part of the leaflet may be reproduced in any form, by print, photo print, microfilm, or any other means, without written permission from Damen Shipyards Group