



SEA FISHER 2007

PURSE SEINER

GENERAL

Basic functions	Purse seining fitted with an insulated fish hold for storage of refrigerated / frozen catch.
Classification	Hull built to Bureau Veritas (no certificate) or equivalent I • HULL Fishing Vessel- Coastal Waters

DIMENSIONS

Length o.a.	20.10 m
Length b.p.p.	18.65 m
Beam mld.	7.00 m
Depth at side (base)	3.75 m
Draught aft (approx.)	3.10 m

TANK CAPACITIES

Fuel oil (service)	18.0 m ³
Fresh water (service)	8.0 m ³
Lubrication oil	1.0 m ³
Bilge water	2.0 m ³
Dirty oil	1.0 m ³
Sewage	2.0 m ³

FISH HOLD CAPACITY

Fish hold (insulated)	85 m ³
-----------------------	-------------------

PERFORMANCES (APPROX.)

Speed (at design draught)	8.5 kn
Pull (at 4 kn speed)	5.0 t

PROPULSION SYSTEM

Main engine	Volvo D 16 MH
Propulsion power	442 kW (600 bhp) @ 1800 rpm
Gearbox	Reverse reduction, ratio 5.050:1
Propeller	1600 mm FPP in a nozzle
Rudder	Balance streamlined double plate

AUXILIARY EQUIPMENT

Networks	230/400 V 50 Hz
Generator set	Caterpillar C1.5 NA, 10.7 kW / 13.4 kVA
Hydraulics for deck equip.	HPU, driven by PTO on the gearbox

DECK LAY-OUT

Anchor to be used with the warp	175 kg Pool (High Holding Power)
Purse seine rigging	Main mast, purse boom and brail boom
Purse seine winch	Three drums with parallel shafts Pull 4.6 tons @ 65m/min mid layer Main purse drum 600 m. of 15 mm steel wire Bow purse drum 300 m. of 16 mm steel wire Tow line drum 200 m. of 16 mm steel wire
Power block	3.7 ton at 44 m/min
Brail boom & topping winch & cargo winch	1.5 ton at 30m/min. each
Life raft	One on the forecastle deck, 5 persons

REFRIGERATION / FREEZING

The fish hold is refrigerated to control the melting rate of shore supplied ice

ACCOMMODATION

A ventilated accommodation for 5 persons, completely insulated and finished with durable modern linings. The accommodation includes 3 cabins, a galley mess room, a sanitary space and a changing room. The wheelhouse is compact has a Dampa ceiling and offers an unobstructed view in all directions.

NAUTICAL, COMMUNICATION, FISH FINDING EQUIPMENT

External communication	2x VHF, Navtex, AIS, SART, EPRIB
Internal communication	Intercom
Nautical systems	Compass, radar, GPS, echo sounder
Fish finding systems	Colour fish finder

OPTIONS

Classification	I ✱ HULL • MACH Fishing Vessel-Coastal Waters
Increased generating power	CaterpillarC-4.4 TA, 69ekW/86 kVA for power consumers
Anchor winch	Electrically driven, with cable drum
Refrigeration / freezing	Flake ice machine Blast freezing-40°C in combination with Fish hold freezing - 25°C
External communication	SSB

FREEZING / REFRIGERATION

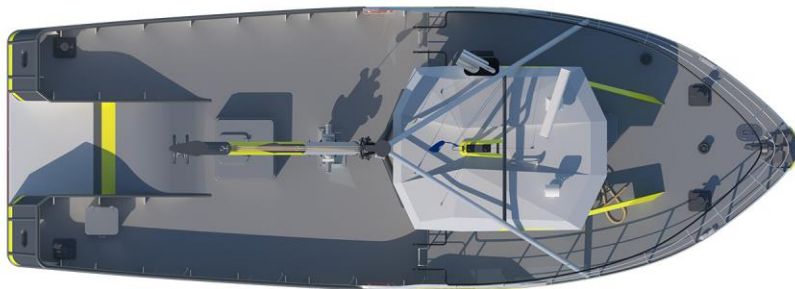
Fish hold refrigeration	0 °C (auxiliary load 3 kW)
Ø Flake ice machine	1100 kg /24 hours (auxiliary load 8 kW)

All data presented is preliminary and is subject to change without prior notice. Artist impressions and general arrangement plan may show optional equipment. Options may impact performances.

DAMEN

SEA FISHER 2007

PURSE SEINER



DAMEN

DAMEN SHIPYARDS GROUP

Avelingen-West 20
4202 MS Gorinchem
The Netherlands

P.O. Box 1
4200 AA Gorinchem
The Netherlands

phone +31 (0)183 63 99 22
fax +31 (0)183 63 21 89

info@damen.com
www.damen.com

© No part of the leaflet may be reproduced in any form, by print, photo print, microfilm, or any other means, without written permission from Damen Shipyards Group