



BT4109

GENERAL

Basic functions	Beam trawler / Bottom Trawl
Classification	Bureau Veritas * HULL o MACH 100A1 Beam trawler

DIMENSIONS

Length overall	41,09 m
Length b.p.p	36,24 m
Beam moulded	9,00 m
Depth moulded	5,10 m
Draught	4,70 m
Tonnage (approx.)	499 GT

TANK CAPACITIES

Fuel oil	87.4 m ³
Fresh water	28 m ³
Lubrication oil	1 m ³
Dirty oil	6 m ³
Sewage	6 m ³

CAPACITIES

Fish hold	225 m ³
Fish boxes (40 kg)	1000+

PROPULSION SYSTEM

Main engine	ABC 8 DZC
Propulsion power	1472kW
Gearbox	Reintjes
Propeller	FPP Ø3400
Rudder	NACA
Bow thruster	110 kW

ELECTRICAL EQUIPMENT

Generator sets	2 x 280 kW
400V Switchboard	
230V Switchboard	
24V Emergency Panel	

DECK EQUIPMENT

10 drum fishing winch	2 x 10 T @ top layer
Anchor winch	

CATCH PROCESSING DECK

Conveyor belts
Chutes to lower deck
Automated weighing system
Flake ice machines
Chilled fish hold

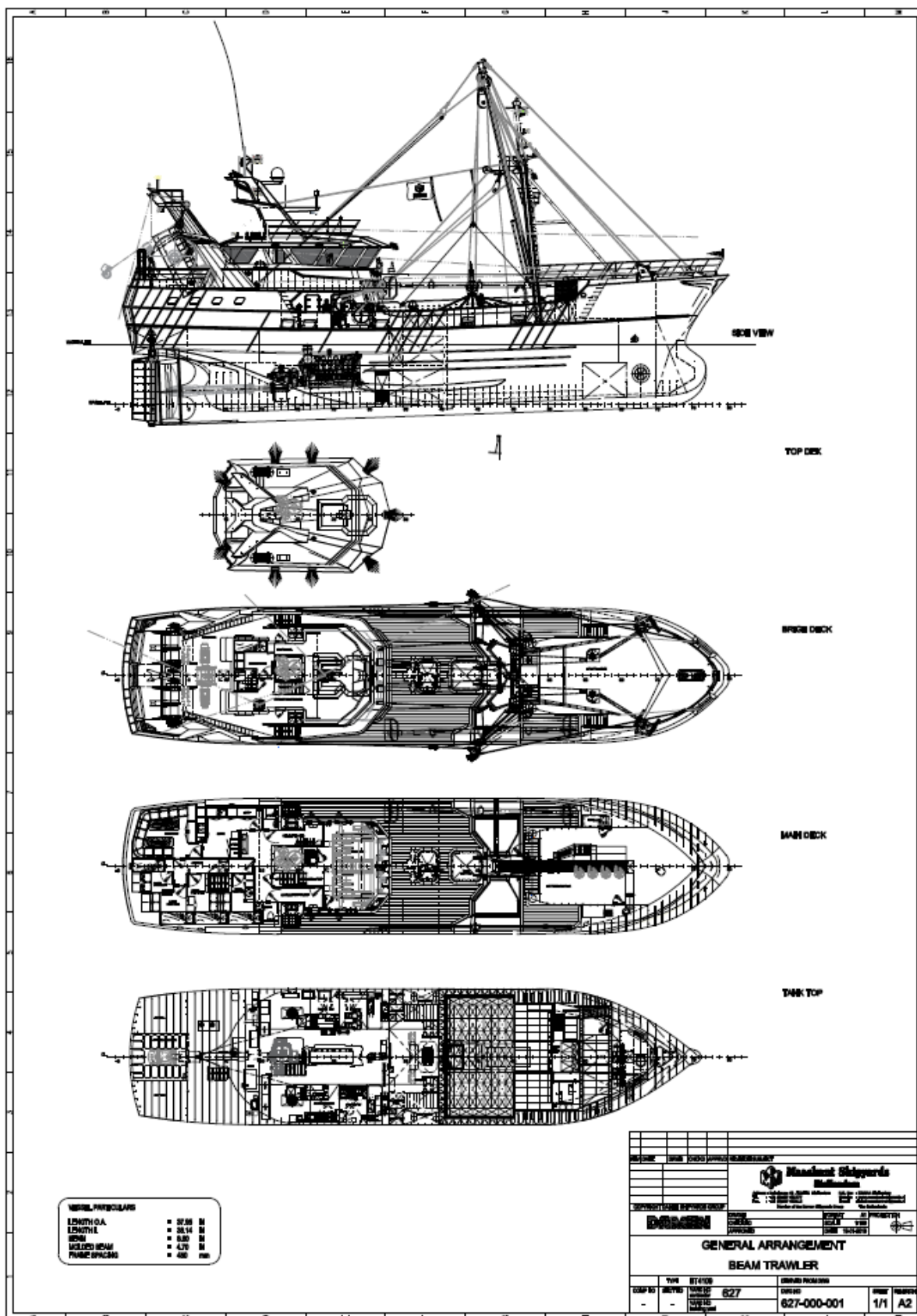
ACCOMMODATION

Captain's cabin	1 person
Chief engineers cabin	1 person
Crew cabin 1	2 persons
Crew cabin 2	2 persons
Crew cabin 3	2 persons
Galley	
Mess room	
Sanitary space	1 communal sanitary room per deck
Toilets	1 toilets per deck

NAUTICAL AND COMMUNICATION EQUIPMENT

GMDSS 2

SPECIAL EQUIPMENT



Member of the DAMEN SHIPYARDS GROUP

Deltahaven 40
3251 LC Stellendam
The Netherlands

P.O. Box 12
3250 AA Stellendam
The Netherlands

phone +31 (0)187 49 14 77
fax +31 (0)187 49 31 13

info@maaskant@damen.com
www.maaskant-shipyards.nl