



DAMEN ROAD FERRY 8521

YAVUZ SULTAN SELIM-1 / KANUNI SULTAN SÜLEYMAN

GENERAL

YARDNUMBER	539301-02
DELIVERY DATE	2008
HULL MATERIAL	Aluminium
SUPERSTRUCTURE	Aluminium
BASIC FUNCTIONS	Fast Ro-Ro Passenger Ferry
CLASSIFICATION	Bureau Veritas * HULL, * MACH, RoRo / Passenger-Car Carrier, Coastal Area, *AUT-UMS. lightship
SAFETY	National authorities requirements for coastal waters
FLAG	Turkey
OWNER	IDO

DIMENSIONS

LENGTH O.A.	85.00 m
BEAM O.A.	21.00 m
DEPTH AT SIDES	6.50 m
DRAUGHT MAX. APPROX.	3.15 m

TANK CAPACITIES

FUEL	34.00 m ³
FRESH WATER	5.00 m ³
SEWAGE	10.00 m ³
BILGE WATER	1.00 m ³

PERFORMANCE

SPEED @ 90% MCR	22,0 kn. at 200 tonnes deadweight
-----------------	-----------------------------------

PROPULSION SYSTEM

MAIN ENGINES	4 x CAT 3516B
TOTAL POWER	6740 bkW at 1600 rpm
THRUSTERS	4 x Rolls Royce AZP85

AUXILIARY EQUIPMENT

CAPACITY	3 x 200 kW _e
NETWORK	400 V AC, 3 phase, 50 Hz 24 V DC

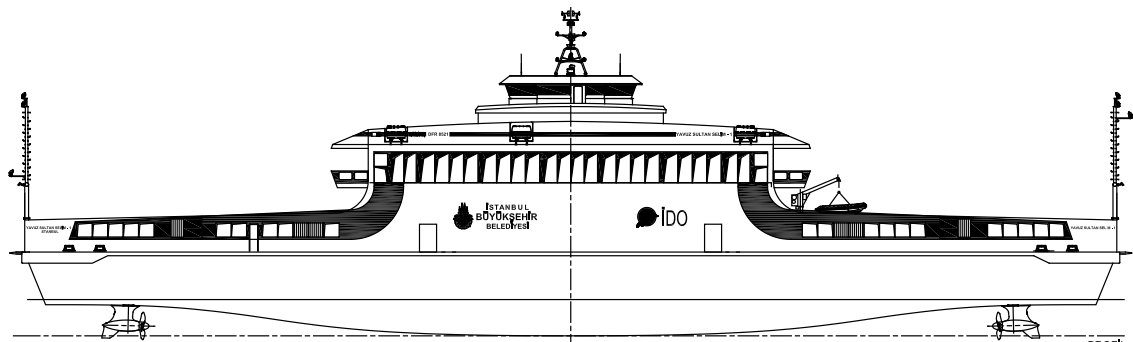
ACCOMMODATION

PASSENGERS	500 inside / 100 outside
VEHICLES	112 cars or 12 trucks and 64 cars
BAR KIOSK	1
TOILETS	8 + 2 disabled
CREW	10
CREW ACCOMODATION	4 x 2, 2 x 1 crew cabin 1 officer's mess 1 crew mess
HVAC	Ventilation and A.C. in passenger saloons, crew accommodation and wheelhouse
SERVICE SPACES	1 elevator 2 prayer rooms 1 sick bay

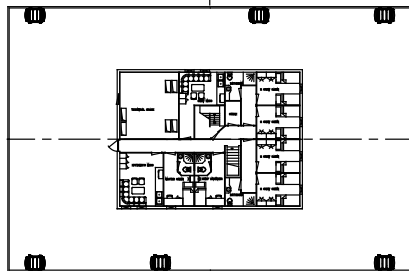
NAUTICAL, SURVEILLANCE AND COMMUNICATION EQUIPMENT

NAUTICAL EQUIPMENT ACCORDING TO GMDSS A1

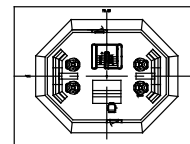
DAMEN



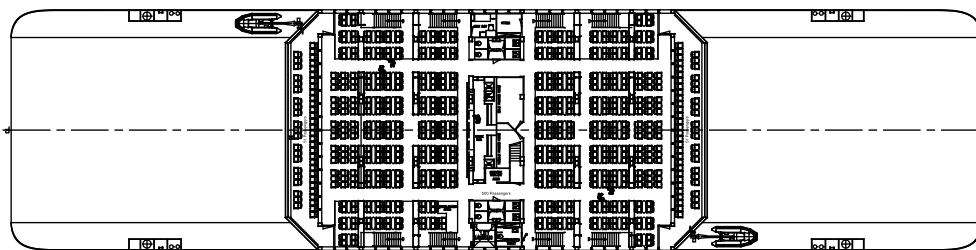
PROFIL
PROFILE



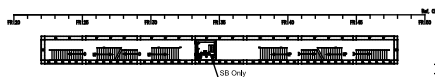
Upper deck



Wheelhouse

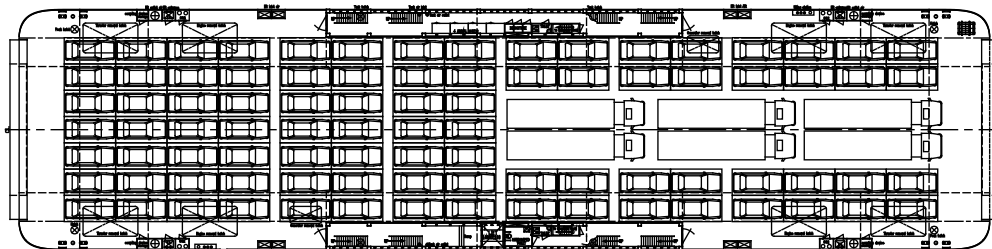


Passenger deck plan



SR Deck

Sleeper deck plan SR
SR is symmetrical



Car deck

DAMEN ROAD FERRY 8521

YAVUZ SULTAN SELIM-1 / KANUNI SULTAN SÜLEYMAN

DAMEN

DAMEN SHIPYARDS GROUP

Industrieterrein Avelingen West 20
4202 MS Gorinchem

P.O. Box 1
4200 AA Gorinchem
The Netherlands

phone +31 (0)183 63 99 11
fax +31 (0)183 63 21 89

info@damen.nl
www.damen.nl