



ROAD FERRY 5212

STANDARD

GENERAL

Basic functions	Passenger/Vehicle/Cargo Transport
Hull material	Steel
Superstructure	Steel
Classification	Bureau Veritas 1*HULL • MC 5 IN (0.6) Z Passenger vessel

DIMENSIONS

Length overall	52.00 m
Beam molded	12.00 m
Depth at sides	3.00 m
Design Draft	1.70 m
Deadweight	280 t
Deck load	14 t axle loads

TANK CAPACITIES

Fuel oil (appr.)	20 m ³
Fresh water (appr.)	3 m ³

PERFORMANCES

Speed	9 kn
-------	------

PROPULSION SYSTEM

Main engines	4 x Caterpillar C12
Total Power	1016 kW at 1360 1800 RPM
Propulsion	4 x Schottel SRP 200

AUXILIARY EQUIPMENT

Generator	2x Cat C4.4 38 ekW
Network	440 V / 220 V AC, 3 phase, 50 Hz., 24 V DC

ACCOMMODATION

Total passengers on board (max.)	2000
Seating capacities	196 foldable wooden seats 512 fixed wooden seats 10 VIP seats
Cars (max.)	27
Trucks (max.)	4

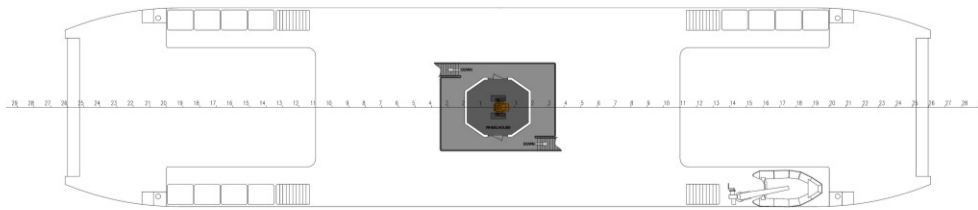
NAUTICAL AND COMMUNICATION EQUIPMENT

Wheelhouse equipped with nautical and communications equipment according to national Authorities and owner's requirements.

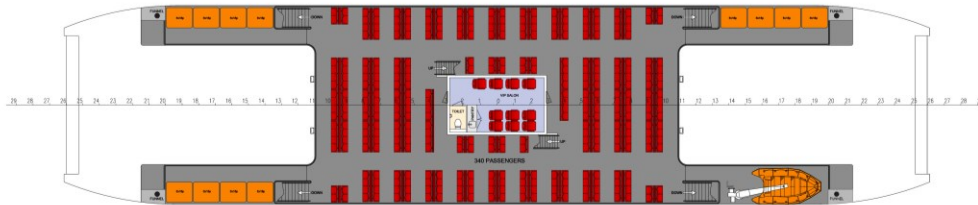
Chart table with drawers – 1 X-band radar – Rate of turn indicator – Inland AIS – 1 GPS compass – 1 Autopilot – 1 Echo sounder – Intercom – PA – CCTV - VHF

ROAD FERRY 5212

STANDARD



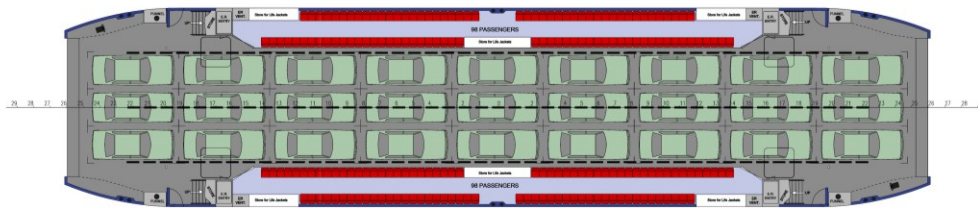
Wheelhouse deck



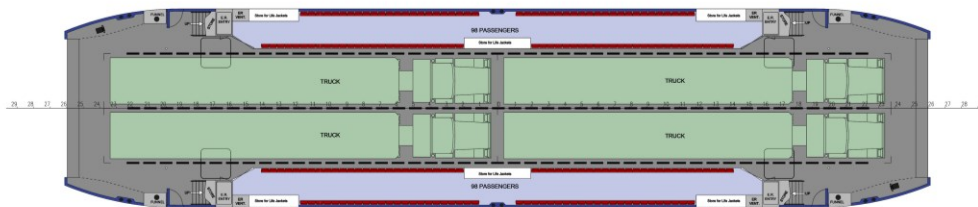
Crew deck



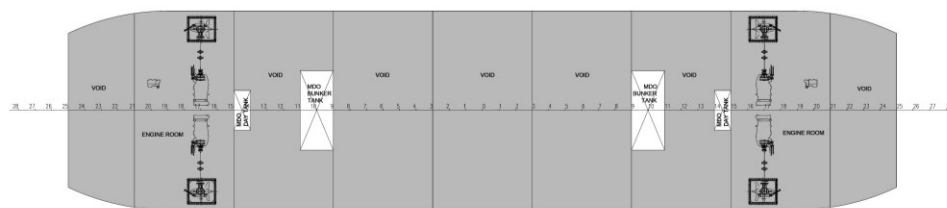
Passenger deck



Main deck (with cars)



Main deck (with trucks)



Below main deck



DAMEN SHIPYARDS GROUP

Avelingen-West 20
4202 MS Gorinchem
The Netherlands

P.O. Box 1
4200 AA Gorinchem
The Netherlands

phone +31 (0)183 63 99 22
fax +31 (0)183 63 21 89

info@damen.com
www.damen.com

JUNE, 2017