



TRAILING SUCTION HOPPER DREDGER 2000

Damen TSHD Port and Maintenance Series

GENERAL

Basic functions	Trailing suction dredging
Classification society	Bureau Veritas
Notation	I, *Hull, *Mach, Hopper Dredger, unrestricted navigation – dredging within 8 miles from shore, AUT-UMS, GREEN PASSPORT

DIMENSIONS

Length o.a.(ex bow coupling)	76.00 m
Length b.p.p.	72.70 m
Beam moulded	14.20 m
Depth moulded	5.40 m
Draught (dredging)	4.90 m
Deadweight	3,150 t
Hopper volume	2,000-2,200 m ³

TANK CAPACITIES

Fuel oil	200 m ³
Potable water	34 m ³

PERFORMANCES

Speed (dredging draught)	10.3 kn
Dredging depth	25 m
Rainbow distance	30 m (option)
Discharge distance	1,000 m (option)

PROPULSION SYSTEM

Propulsion power	2x 850 kW
Propellers	2x 1,700 mm, FPP, azimuth in nozzle
Bow thruster	1x channel type, 280 kW

DREDGE SYSTEM

Trailing suction system	1x 600 mm trailing suction pipe 1x diesel driven dredge pump 1x adjustable overflow
Discharge system	4x rod actuated bottom doors
Supporting systems	1x diesel driven jet water pump

ELECTRICAL SYSTEM

Networks	440V/230V @ 60 Hz
Generator sets	2x 200 ekW
Emergency generator set	1x 50 ekW

DECK EQUIPMENT

Anchor winch	2x electric
Capstans	2x electric, 5t pull
Store crane	Combined store and rescue boat davit

ACCOMMODATION

Crew	12 persons
------	------------

NAUTICAL AND COMMUNICATION EQUIPMENT

Radar system	1x X-band
GMDSS	Area A3
Camera system	CCTV
Remote monitoring	Damen Triton

OPTIONS

The Damen TSHD series are of a modular design to enable customization of the vessel. Optional systems can be added or omitted to meet specific client requirements

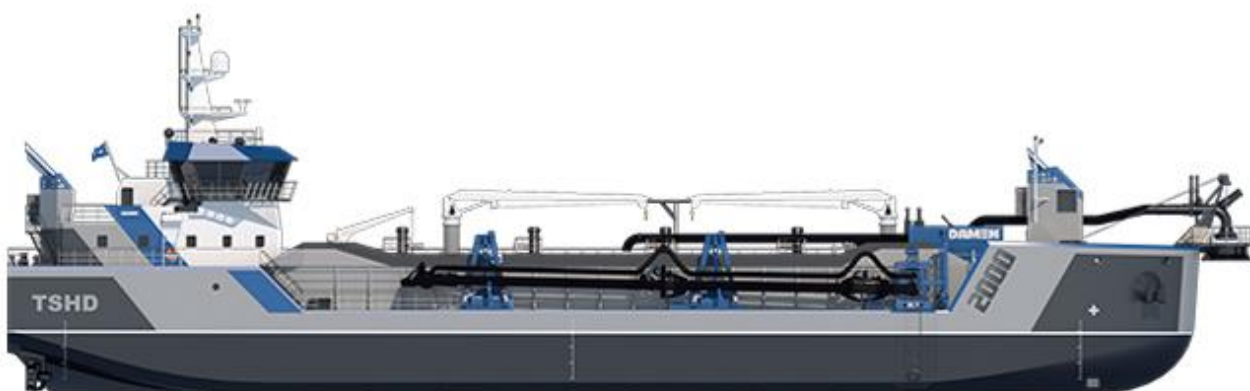
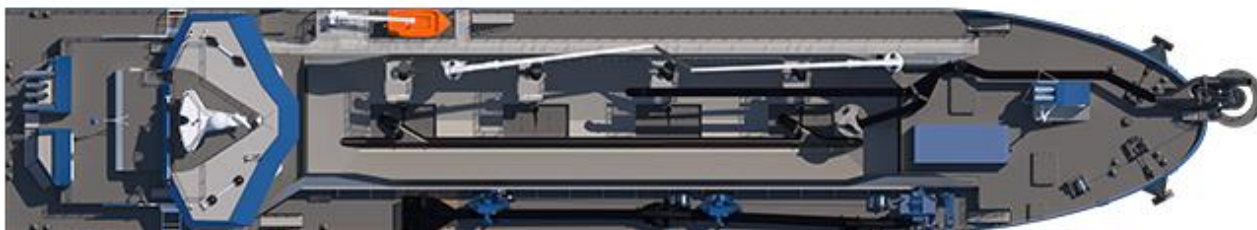
Main options comprise:	
Dredge system	Light mixture overboard system with Non-radioactive production measurement
Discharge system	Self-emptying system with bow coupling
Dredge Monitoring	DDM 5.0 with various modules
Dredge system	Degassing system
Discharge system	Fixed rainbow nozzle
Deck cranes	2x hydraulic stiff boom (4.0 t @ 12.5 m, 5.5 t @ 12.5 m)
IMO Tier III compliant	SCR exhaust system for all diesel engines larger than 130 kW
Increased accommodation	Additional accommodation tier to increase capacity to 22 persons

Other options upon request

All information in this datasheet is intended for information only. Figures may vary depending on final configuration of the vessel

TRAILING SUCTION HOPPER DREDGER 2000

Damen TSHD Port and Maintenance Series



DAMEN

DAMEN SHIPYARDS GROUP

Avelingen-West 20
4202 MS Gorinchem
The Netherlands

P.O. Box 1
4200 AA Gorinchem
The Netherlands

phone +31 (0)183 63 99 22
fax +31 (0)183 63 21 89

info@damen.com
www.damen.com

© No part of the leaflet may be reproduced in any form, by print, photo print, microfilm, or any other means, without written permission from Damen Shipyards Group