



## DAMEN CUTTER SUCTION DREDGER CSD650 -18 M

“Ural River”

### GENERAL

YARD NO.	B140623 - YN561602
TYPE	CSD650 -18 m
DELIVERY DATE	January, 2015
BASIC FUNCTIONS	Capital dredging and maintenance

### DREDGING FEATURES

DREDGING DEPTH	-18 m @ 50°
MAX SWING WIDTH	62,8 m
MAX. MIXTURE CAPACITY	7000 m <sup>3</sup> /h

### DREDGE INSTALLATION

DREDGE PUMP	BP6560MD
DIAM. SUCTION/DISCHARGE PIPE	650 mm
CUTTER POWER	700 kW
CUTTER TYPE	5-2100
VACUUM RELIEVE VALVE	Hydraulic

### ENGINE INSTALLATION

DREDGE PUMP DIESEL	Caterpillar 3516C HD
CONTINUOUS POWER RATING	1825 kW @ 1600 rpm
AUXILIARY DIESEL	Caterpillar 3512C
PRIME POWER RATING	1119 kW @ 1600 rpm
HYDRAULIC INSTALLATION	Driving cutter, winches and spuds
ELECTRICAL INSTALLATION	24 V DC and 230/400 V AC, 63,3 kVA
HARBOUR GENERATOR SET	230/400 V AC, 35 kVA

### PRINCIPAL DIMENSIONS

LENGTH O.A. INC. LADDER	61,80 m
LENGTH OVER PONTOONS	49,30 m
BREADTH O.A.	9,50 m
DRAUGHT APPROX.	1,45 m
AIR DRAUGHT	8,40 m
TOTAL WEIGHT	580 ton

### TANK CAPACITIES

FUEL OIL APPROX.	110,00 m <sup>3</sup>
HYDRAULIC OIL	3,50 m <sup>3</sup>

### DECK MACHINERY

LADDER WINCH	Hydraulic 270 kN, 0-15 m/min.
SWING WINCHES (2X)	Hydraulic 270 kN, 0-20 m/min.
AFT STORM WINCH	Hydraulic 270 kN, 0-15 m/min.
SPUDS (2X)	Ø 914 mm, length 32 m
SPUD HOISTING (2X)	Hydraulic cylinder, stroke 2000 mm
ANCHOR BOOM WINCHES (2X)	Hydraulic, 135 kN, 0-25 m/min
SPUD CARRIAGE CYLINDER	Hydraulic cylinder, stroke 6000 mm
DECK CRANE	Electric, capacity 6,3 ton

### DREDGING INSTRUMENTATION

- Dredging depth indicator
- Vacuum and pressure indication of dredge pump
- Spud carriage position indicator
- Production measurement (flow and density)
- Positioning visualisation (dGPS)

### CREW SPACE

- Spacious ergonomic designed control cabin and engine room
- Day accommodation with toilet, kitchen and shower
- Additional crew accommodation area
- Air-conditioned and heated

### REMARKABLE FEATURES

- Dismountable design which allows transport by road
- Inboard dredge pump placed in separate pump room
- Suitable for biological degradable hydraulic oil

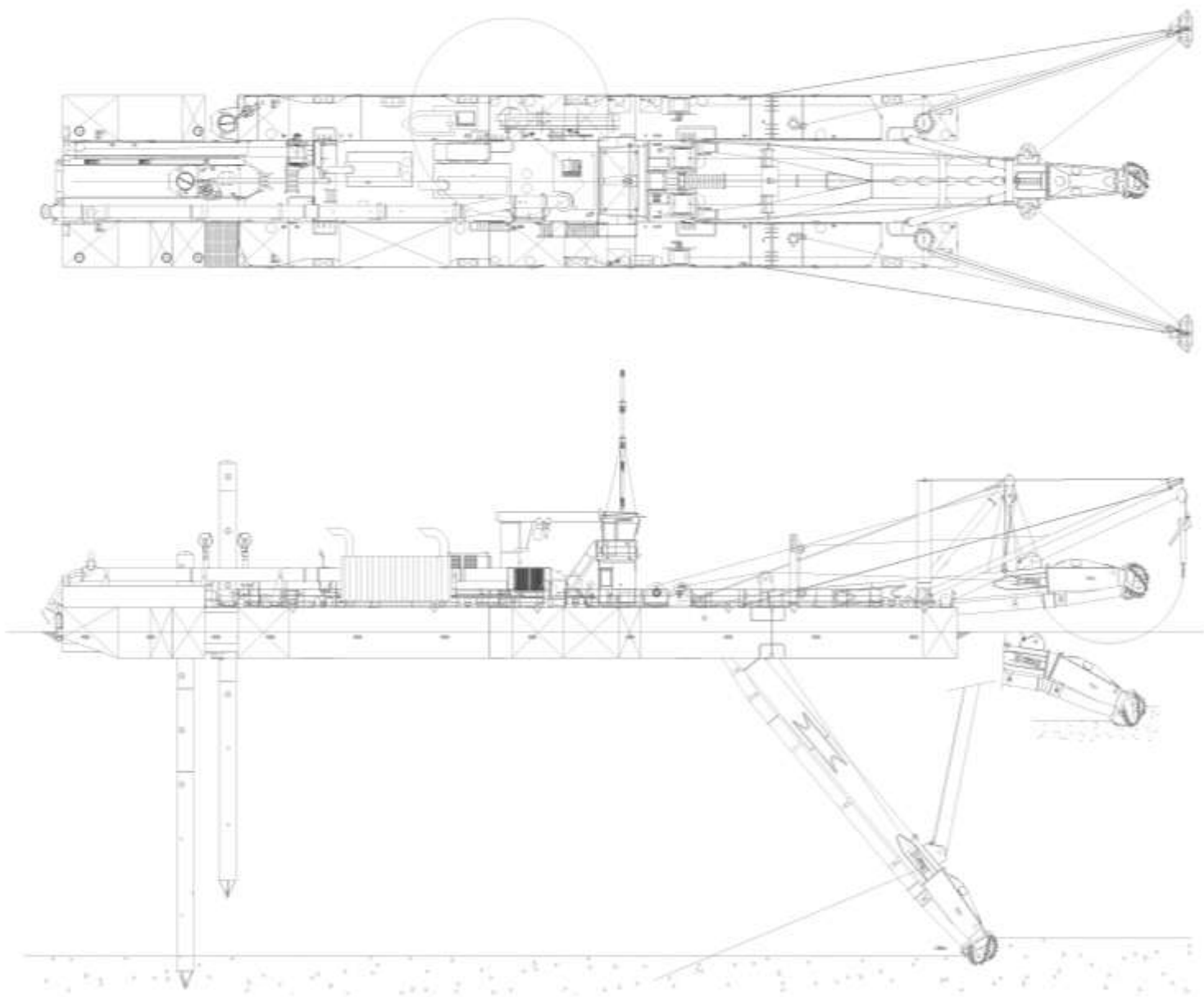
### ADDITIONALS

- Bureau Veritas Coastal classification
- Navigation package (lights and horn)
- Communication package (VHF)
- Shore power supply connection
- Various client specific provisions

### OWNER

Van Oord, The Netherlands

**DAMEN**



## DAMEN CUTTER SUCTION DREDGER CSD650 -18M

“Ural River”

# DAMEN

DAMEN DREDGING EQUIPMENT

Member of the DAMEN SHIPYARDS GROUP



Edisonstraat 32  
3861 NE Nijkerk

P.O. Box 1021  
3860 BA Nijkerk  
The Netherlands

phone +31 (0)33 247 40 40  
fax +31 (0)33 247 40 60

info@damendredging.com  
www.damendredging.com