



DAMEN CUTTER SUCTION DREDGER 500

“Seaworks 19”

GENERAL

YARD NO.	B12.0591 – YN561219
TYPE	CSD500
DELIVERY DATE	June, 2014
BASIC FUNCTIONS	Capital mining and maintenance dredging

DREDGING FEATURES

DREDGING DEPTH	-16 m
MAX. SWING WIDTH	54,9 m
MIXTURE CAPACITY	4,000 m ³ /h

DREDGE INSTALLATION

DREDGE PUMP TYPE	BP5045
DIAM. SUCTION/DISCHARGE PIPE	550/500 mm
CUTTER TYPE	5-1625 (with changeable chisels)
CUTTER POWER	180 kW

ENGINE INSTALLATION

DREDGE PUMP DIESEL	Caterpillar 3512B
CONTINUOUS POWER RATING	954 kW @ 1,600 rpm
AUXILIARY DIESEL	Caterpillar 3,406C
PRIME POWER RATING	345 kW @ 1,800 rpm
HYDRAULIC INSTALLATION	Driving cutter, winches and spuds
ELECTRICAL INSTALLATION	24 V DC and 230/400 V AC, 34 kVA

PRINCIPAL DIMENSIONS

LENTH O.A. INCL. LADDER	53,00 m
LENGTH OVER PONTOONS	36,60 m
BEAM	7,95 m
DRAUGHT	1,00 m
AIR DRAUGHT	6,40 m
TOTAL WEIGHT	181 ton

TANK CAPACITIES

FUEL OIL APPROX.	22,0 m ³
BALLAST WATER (FORE AND AFT)	8,7 m ³ (4x)

DECK MACHINERY

LADDER WINCH	Hydraulic, 120 kN, 0-15 m/min
SWING WINCHES (2X)	Hydraulic, 120 kN, 0-15 m/min
SPUDS (2X)	Ø 610 mm, length 21 m
SPUD HOISTING (2X)	Hydraulic cylinder, stroke 1,500 mm
ANCHOR BOOM WINCHES (2X)	Hydraulic, 40 kN, 0-25 m/min
SPUD CARRIAGE CYLINDER	Hydraulic cylinder, stroke 4,000 mm

INSTRUMENTATION

- Dredging depth indicator
- Vacuum and pressure indication of dredge pump
- Positioning visualization
- Spud carriage position indicator
- Production calculation unit

REMARKABLE STANDARD FEATURES

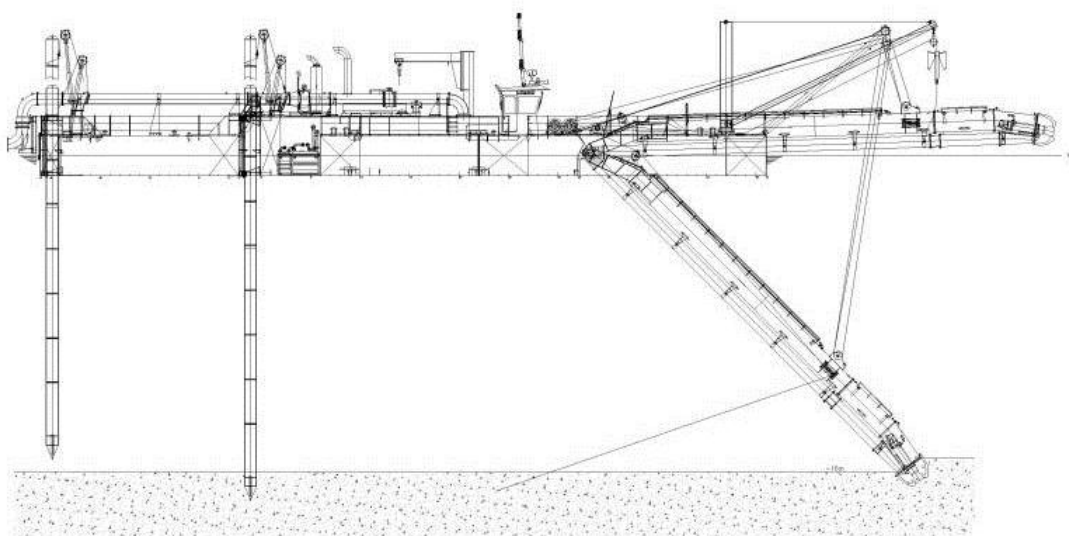
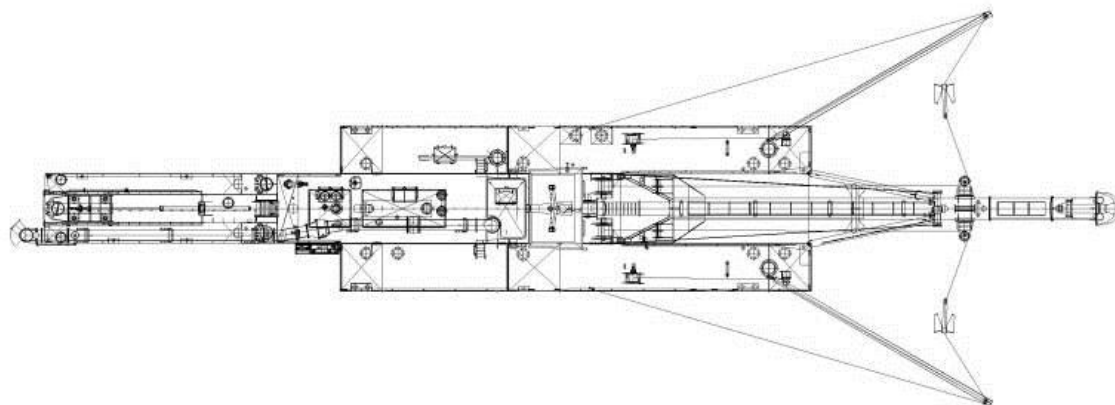
- Dismountable design
- Heavy duty robust design
- Simultaneous operation of all functions possible
- Spacious ergonomic designed control cabin and engine room
- Operators cabin with air conditioning
- Scantlings well in excess of class regulations

PROVIDED OPTIONS

- Spud Carriage installation
- Ladder extension
- Anchor boom installation
- Navigation package
- Communication package
- Navguard positioning visualization
- Production measurement
- Deck crane
- Sternswivel
- Non return valve
- Heavy duty cutter

LOCATION

Seaworks, Qatar



DAMEN CUTTER SUCTION DREDGER 500

“Seaworks 19”

DAMEN

DAMEN DREDGING EQUIPMENT

Member of the DAMEN SHIPYARDS GROUP



Edisonstraat 32
3861 NE Nijkerk

P.O. Box 1021
3860 BA Nijkerk
The Netherlands

phone +31 (0)33 247 40 40
fax +31 (0)33 247 40 60

info@damendredging.com
www.damendredging.com