



# DAMEN CUTTER SUCTION DREDGER 500

## "HAVILAH 1"

### GENERAL

YARD NO.	B09.0148 – YN561506
TYPE	CSD500
DELIVERY DATE	October 2007
BASIC FUNCTIONS	Mining and maintenance dredging

### DREDGING FEATURES

DREDGING DEPTH	16 m
MIXTURE CAPACITY	4000 m <sup>3</sup> /h

### DREDGE INSTALLATION

DREDGE PUMP TYPE	BP5045MD
DIAM. SUCTION/DISCHARGE PIPE	550/500 mm
CUTTER TYPE	5-1625 (with changeable chisels)
CUTTER POWER	180 kW

### ENGINE INSTALLATION

DREDGE PUMP DIESEL	Caterpillar 3512B
CONTINUOUS POWER RATING	954 kW @ 1600 rpm
AUXILIARY DIESEL	Caterpillar 3406-C TA
PRIME POWER RATING	345 kW @ 1800 rpm
HYDRAULIC INSTALLATION	driving cutter, winches and spuds
ELECTRICAL INSTALLATION	24 Volt DC and 230/400 Volt AC, 34 kVA

### PRINCIPAL DIMENSIONS

LENTH O.A. INCL. LADDER	49.30 m
LENGTH OVER PONTOONS	36.60 m
BEAM	7.95 m
DEPTH	2.00 m
DRAUGHT	1.15 m

### TANK CAPACITIES

FUEL OIL APPROX.	22 m <sup>3</sup>
BALLAST WATER (FORE AND AFT)	32 m <sup>3</sup>

### DECK MACHINERY

LADDER WINCH	hydraulic, 120 kN, 0-15 m/min
SWING WINCHES (2X)	hydraulic, 120 kN, 0-15 m/min
ANCHOR B OOM WINCHES	hydraulic, 40 kN, 0-25 m/min
SPUDS (2X)	Ø 610 mm, length 22 m
SPUD HOISTING (2X)	hydraulic cylinder, stroke 1500 mm
SPUD CARRIAGE	traveling cylinder, stroke 3500 mm
DECK CRANE	hydraulic knuckle boom crane lifting capacity 10 ton

### DREDGING INSTRUMENTATION

- Dredging depth indicator
- Vacuum and pressure indication of dredge pump

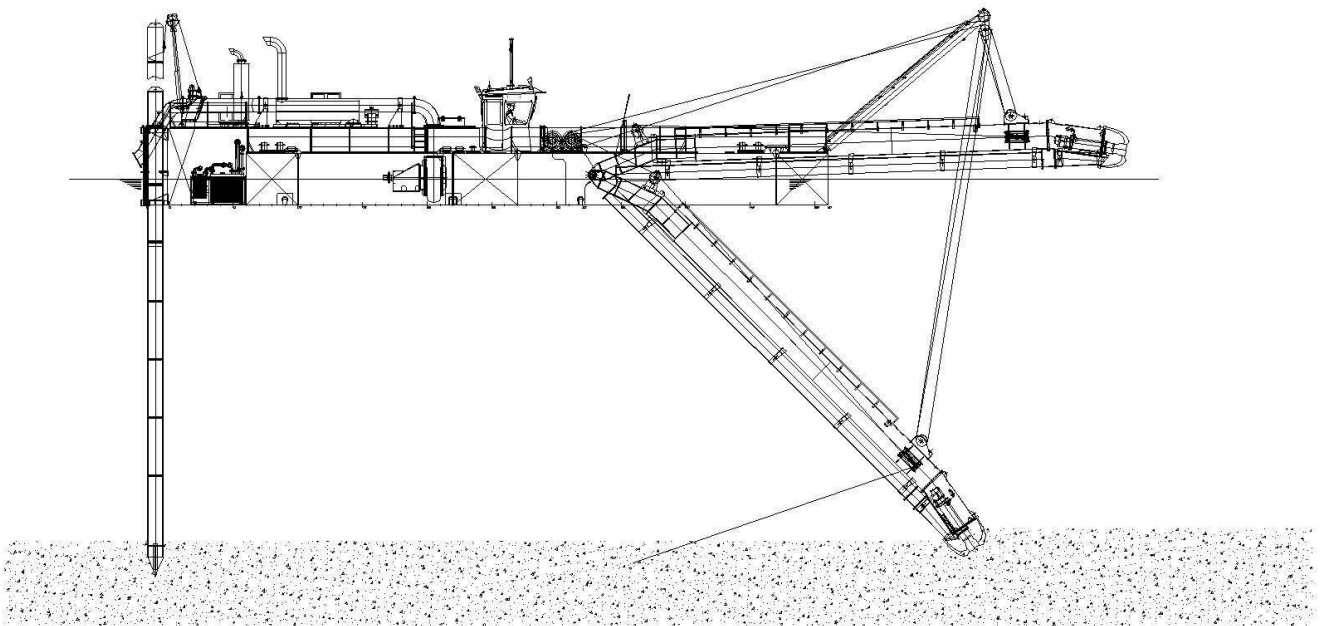
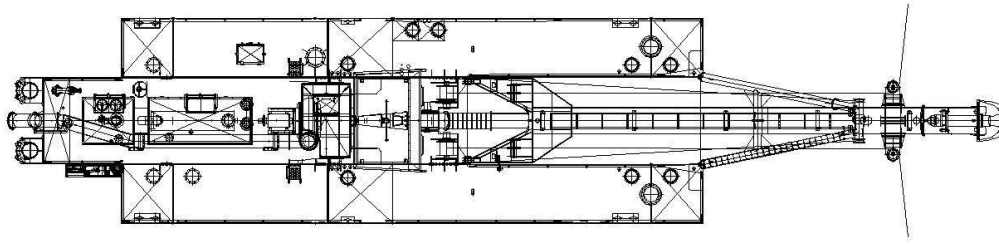
### REMARKABLE STANDARD FEATURES

- Dismountable design
- Heavy duty robust design
- Scantlings well in excess of class regulations
- Spacious ergonomic designed control cabin and engine room
- Simultaneous operation of all functions possible
- 230/400 Volt AC installation
- Operators cabin with air conditioning

### OWNER

William Lloyd, Nigeria

# DAMEN



# DAMEN CUTTER SUCTION DREDGER 500

"HAVILAH 1"

## DAMEN

DAMEN DREDGING EQUIPMENT

Member of the DAMEN SHIPYARDS GROUP



Edisonstraat 32  
3861 NE Nijkerk

P.O. Box 1021  
3860 BA Nijkerk  
The Netherlands

phone +31 (0)33 247 40 40  
fax +31 (0)33 247 40 60

info@damendredging.com  
www.damendredging.com