



DAMEN UTILITY VESSEL 3608

GENERAL

YARDNUMBER	-
FUNCTIONS	Support and supply vessel Bureau Veritas or equivalent
CLASSIFICATION	I *HULL *MACH Unrestricted Navigation AUT-UMS

DIMENSIONS

LENGTH O.A.	35.80	m
BEAM MLD.	8.40	m
DEPTH MLD.	3.60	m
DRAUGHT DESIGN	2.80	m
DEADWEIGHT	200	ton
DECK LOAD (VCG 0.75 M ABOVE DECK)	100	ton
WORK DECK AREA	135	m ²
GROSS TONNAGE	315	GT
PASSENGER SEATING	12	pax
CREW BERTHS	5	berths

TANK CAPACITIES

FUEL OIL	150.0	m ³
FRESH WATER	160.0	m ³
BALLAST WATER	15.0	m ³
LUBRICATION OIL	1.0	m ³
DIRTY OIL	1.0	m ³
SEWAGE	3.6	m ³
BILGEWATER	4.0	m ³

PERFORMANCES

SPEED (AT 2.4 M DRAUGHT)	10.4	kn
--------------------------	------	----

PROPULSION SYSTEM

MAIN ENGINES	2x VOLVO D13, Rating 1
TOTAL PROPULSION POWER	662 bkW (888 bhp) at 1800 rpm
PROPELLERS	2x FP, 1350 mm diameter
BOW THRUSTER	1x FP, 90 kW

AUXILIARY EQUIPMENT

NETWORKS	230/400 V, 50 Hz
GENERATOR SETS	2x VOLVO D7A T, 108ekW, 135 kVA
COOLING SYSTEM	Fresh water through box cooling
AIR CONDITIONING	Split-type

DECK LAY-OUT

ANCHORS	2x High Holding Power
ANCHOR MOORING WINCH	1x Electric with 1 warping head
DECK COVERING	45 mm fir wood on aft

ACCOMMODATION

An air-conditioned accommodation with 3 cabins with shared sanitary facility is fitted.

The accommodation includes a mess room, galley, changing area, passenger seating area and various stores. The wheelhouse has control consoles forward and starboard aft.

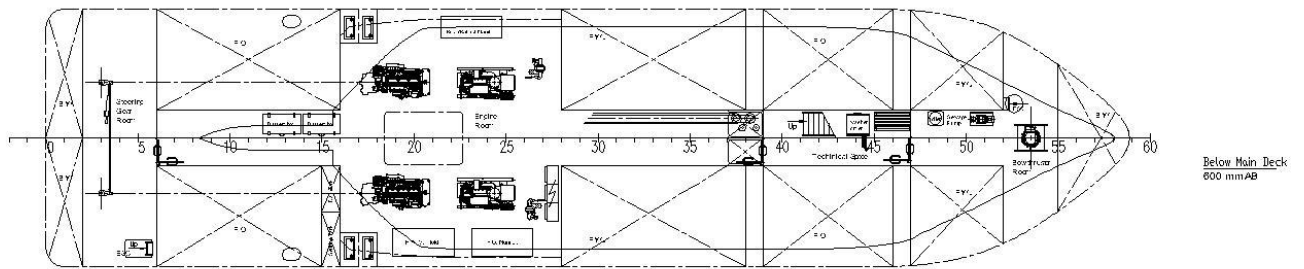
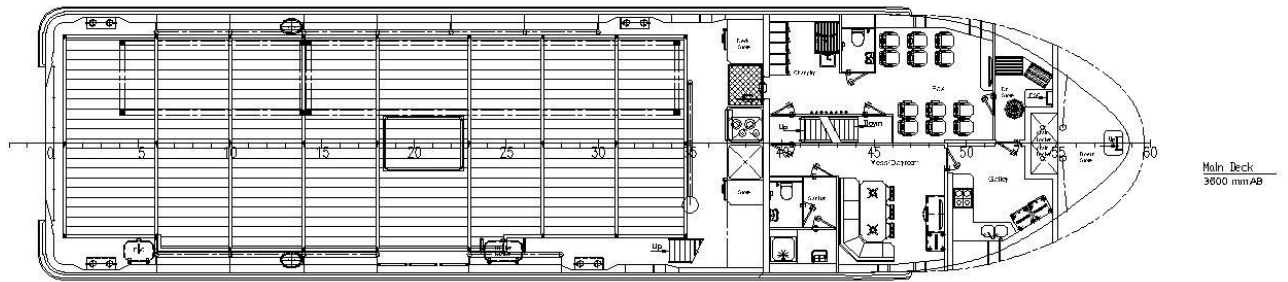
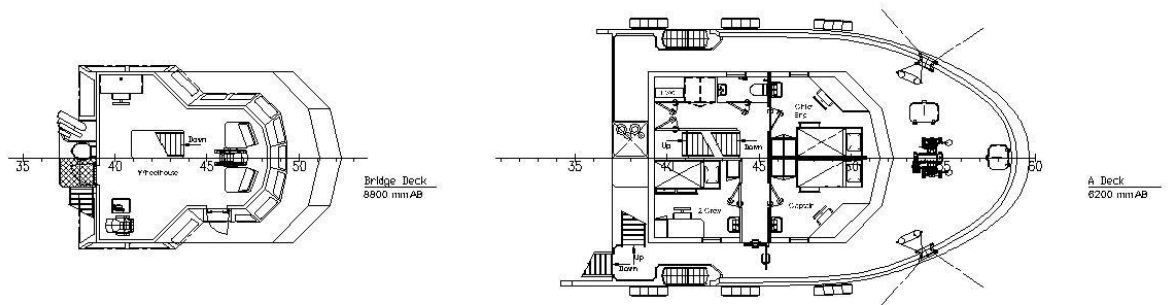
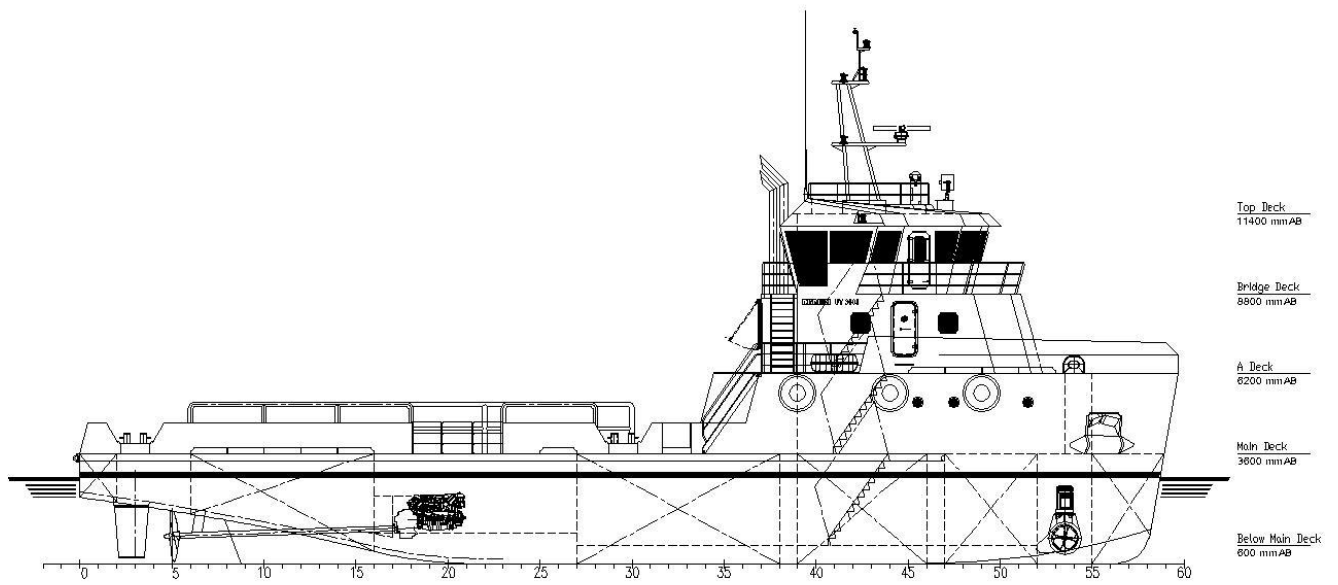
NAUTICAL AND COMMUNICATION EQUIPMENT

EXTERNAL COMMUNICATION	GMDSS A2, AIS
INTERNAL COMMUNICATION	Intercom
NAUTICAL SYSTEMS	X- band radar, autopilot, GPS, magnetic compass, echosounder

OPTIONS

FIRE FIGHTING	600 m ³ /hr. Dedicated firefighting engine-pump combination with two monitors.
DECK CRANE	1x Electric hydraulic, 20 tm.
GEARBOXES	Trolling valves

All data presented is preliminary and is subject to change without prior notice. Artist impression and general arrangement plan may show optional equipment. Options may impact performances.



DAMEN UTILITY VESSEL 3608

DAMEN

DAMEN SHIPYARDS GORINCHEM

Member of the DAMEN SHIPYARDS GROUP



Industrieterrein Avelingen West 20
4202 MS Gorinchem

P.O. Box 1
4200 AA Gorinchem
The Netherlands

phone +31 (0)183 63 99 11
fax +31 (0)183 63 21 89

info@damen.com
www.damen.com