



# DAMEN SHOALBUSTER® 3312 ICE

## "YN571698"

### GENERAL

YARD NUMBER	YN571698 (Damen Shipyards Hardinxveld)
DELIVERY DATE	Ready available
BASIC FUNCTIONS	Towing, mooring, pushing, anchor handling, dredge support
CLASSIFICATION	Bureau Veritas I <del>X</del> HULL • MACH Tug Unrestricted navigation, AUT UMS, ICE Class 1C
NATIONAL AUTHORITIES	Dutch Shipping Inspectorate Unrestricted Navigation
FLAG	The Netherlands
OWNER	

### DIMENSIONS

LENGTH O.A.	33.73	m
BEAM MLD.	12.00	m
DEPTH AT SIDES	4.00	m
DRAUGHT AFT (FULLY LOADED APPROX.)	3.10	m
DRAUGHT AFT 50% CONDITION	2.80	m
DISPLACEMENT LSW (APPROX.)	545	ton
GROSS TONNAGE	480	GT

### TANK CAPACITIES (APPROX)

FUEL OIL	220.0	m <sup>3</sup>
FRESH WATER	35.0	m <sup>3</sup>
SEWAGE	5.0	m <sup>3</sup>
SLUDGE	1.6	m <sup>3</sup>
DIRTY OIL	5.3	m <sup>3</sup>
LUBRICATION OIL	4.5	m <sup>3</sup>
HYDRAULIC OIL	2.4	m <sup>3</sup>
GEAR OIL	4.5	m <sup>3</sup>
BILGE WATER	5.0	m <sup>3</sup>

### PERFORMANCES

BOLLARD PULL AHEAD.	51.0	ton(m)
SPEED	10.9	knots

### PROPULSION SYSTEM

MAIN ENGINES	3x Caterpillar C32-TTA ACERT
TOTAL POWER	2910 bkW (3957 bhp) @ 1800 rpm
GEARBOXES	3x Reintjes WAF 873 / 7,07:1
PROPULSION	3x Promarin fixed pitch propeller
DIAMETER	3x 2250 mm in V.d. Giessen Optima nozzles
BOWTHRUSTER	350 bhp, hydraulically driven Kalkman Beta 350H

### AUXILIARY EQUIPMENT

GENERATOR SETS	2x Caterpillar C6,6, with automatic parallel running
CAPACITY	2x 156 kVA, 50 Hz, 230/400VAC
TRANSFER PUMPS	For Fresh Water: SIHI, 32 m <sup>3</sup> /h @ 1.4 bar For Fuel Oil: SIHI 32 m <sup>3</sup> /h @ 1.4 bar
FUEL OIL SEPARATOR	Westfalia OTC-2
HYDRAULIC SET	Combined with center C32 main engine with Norgear gearbox 590kW @ 1800rpm The gearbox has two clutchable hydraulic pumps.

### DECK LAY-OUT

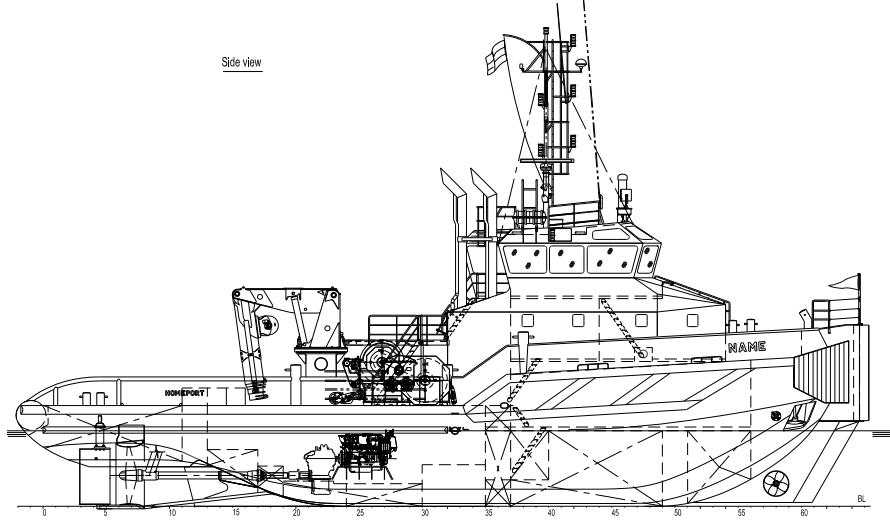
ANCHOR	2x 450 kg Pool (HHP)
CHAIN	22 mm short-link anchor chain 247.5 m
ANCHOR WINCH	2x DMT hydraulic driven with 50m mooring rope drum Heila HLRM 230 4SLK, 9,8Ton @ 16,5m. DMT Waterfall, towing pull 60 ton @ 6 m/min, slack 30m/min, Anchor handling pull 100ton @ 4 m/min, slack 20m/min, Wire capacity of both drums 2x 830m Ø 48mm, Drums 150 / 200 ton holding power
DECK CRANE	2x guide pin type WK hydraulics Bp 50 Ton
ANCHOR HANDLING / TOWING WINCH ACC. TO REGULATIONS OF NOBLE DENTON	1x WK hydraulics SWL 75Ton stroke 400mm
TUGGER WINCH	2x Dromec HPV-12000 12T @ 20m/min 1st lay.

### ACCOMMODATION

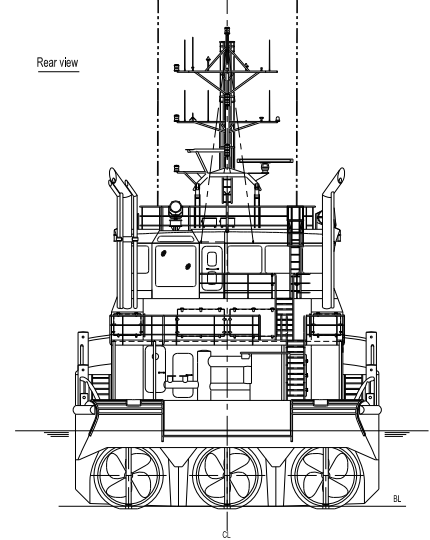
Heated and air-conditioned living spaces for 11 persons, consisting of a captain's cabin, and four double crew cabins, and two single crew cabins, a galley and a mess and sanitary facilities. According to ILO2006 regulations. Also a cold and a dry store are facilitated as per G.A.P.

### NAUTICAL AND COMMUNICATION EQUIPMENT (GMDSS A3)

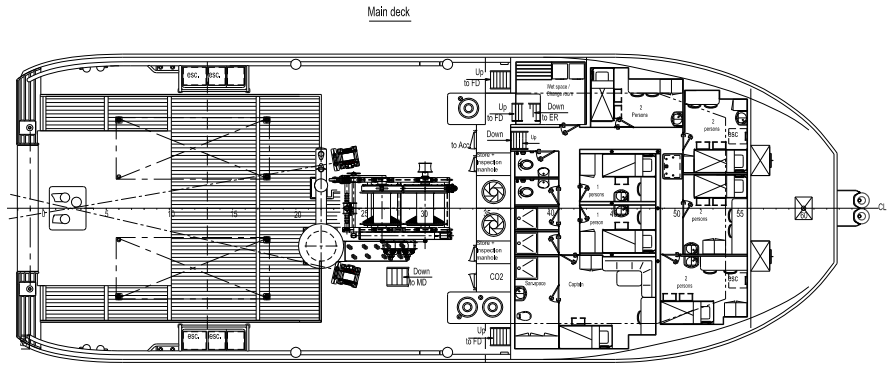
SEARCHLIGHTS	Pesch 2x 2000W
MAGNETIC COMPASS	Kotter type with electric repeater
GYRO COMPASS	Anschuetz Standard 22 Compact
RADAR	1x Furuno FAR-2117
GPS	Furuno GP- 170
AUTOPILOT	Simrad AP 70
AIS	Furuno FA-150
ECHOSOUNDER	Furuno FE-700
SPEEDLOG	Furuno DS-80
VHF RADIO TELEPHONE	2x Sailor RT6222, 25 W
GSM	Globesurfer III
HANDHELD VHF	2x Jotron TR20
NAVTEX	Furuno NX 700A
MF/HF TRANCEIVER	Thrane & Thrane 6310 with DSC
INMARSAT-C	Thrane & Thrane 6110 (2pc)
BRIDGE WATCH ALARM	Furuno BR-500
INTERCOM	Phonetech CIS3000
WIND INDICATOR	Meteo system Osermet OMC-115



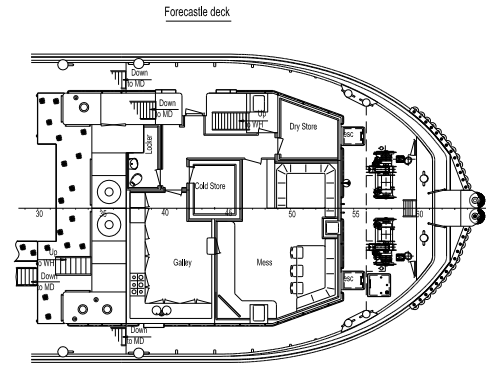
Side view



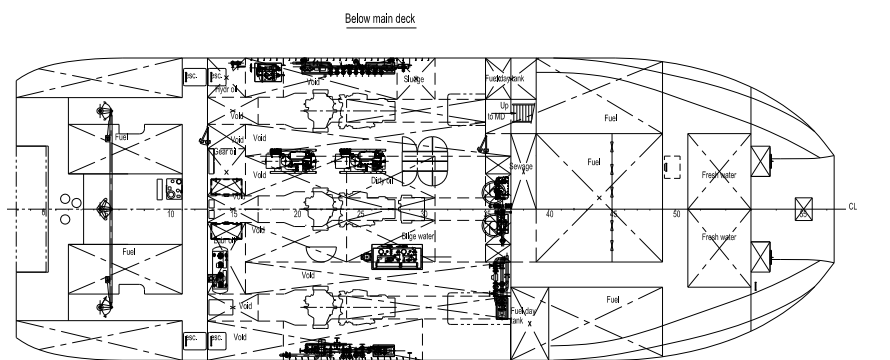
Rear view



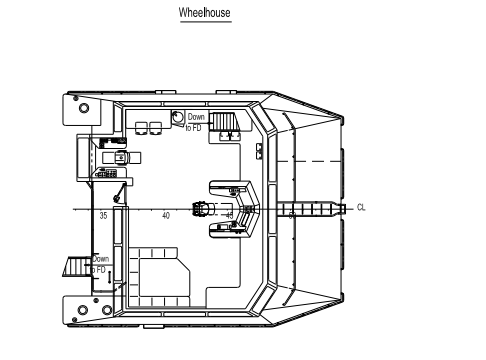
Main deck



Forecastle deck



Below main deck



Wheelhouse

# DAMEN SHOALBUSTER® 3312

"YN571698"



DAMEN SHIPYARDS HARDINXVELD

Member of the DAMEN SHIPYARDS GROUP



Rivierdijk 544  
3371 EB Hardinxveld-Giessendam

P.O. Box 60  
3370 AB Hardinxveld-Giessendam  
The Netherlands

phone +31 (0)184 61 30 88  
fax +31 (0)184 61 77 93

info@damen-hardinxveld.nl  
www.damenshipyardshardinxveld.nl