



Picture of similar vessel

DAMEN SHOALBUSTER® 3209

"YN571717"

GENERAL

YARD NUMBER	571717 (Damen Shipyards Hardinxveld)
DELIVERY DATE	To be determined
BASIC FUNCTIONS	Towing, mooring, pushing, anchor handling, dredging support
CLASSIFICATION	Bureau Veritas I ✕ Hull • Mach Tug Unrestricted Navigation AUT-UMS FiFi 1 with waterspray
REGULATIONS	Dutch Shipping Inspectorate (ILT) or equal, unrestricted service
FLAG	To be determined
OWNER	To be determined

DIMENSIONS

LENGTH O.A.	32.27 m
BEAM O.A.	9.35 m
DEPTH AT SIDES	4.40 m
DRAUGHT AFT	3.30 m
DISPLACEMENT	625 T
GROSS TONNAGE	327 GT

TANK CAPACITIES (APPROX.)

FUEL OIL	181.90 m ³
FRESH WATER	40.80 m ³
LUBRICATION OIL	7.30 m ³
HYDRAULIC OIL	3.10 m ³
DIRTY OIL	4.30 m ³
BILGE WATER	4.30 m ³
SEWAGE	3.30 m ³

PERFORMANCES (APPROX.)

BOLLARD PULL AHEAD	45 tons (m)
SPEED MAX.	11.0 knots

PROPULSION SYSTEM

MAIN ENGINES	2x Caterpillar Type 3512C TA/HD
TOTAL POWER	2610 bkW (3498 bhp) @ 1600 rpm
GEARBOXES	2x Reintjes WAF 773/6.44:1
PROPULSION	2x Promarin fixed pitch propellers
DIAMETER	2x 2250 mm V.d. Giessen optima nozzles
BOWTHRUSTER	257kW (350 bhp), hydraulic driven

(OSE), OWNERS SUPPLIED EQUIPMENT)
Ø ARE OPTIONALS

AUXILIARY EQUIPMENT

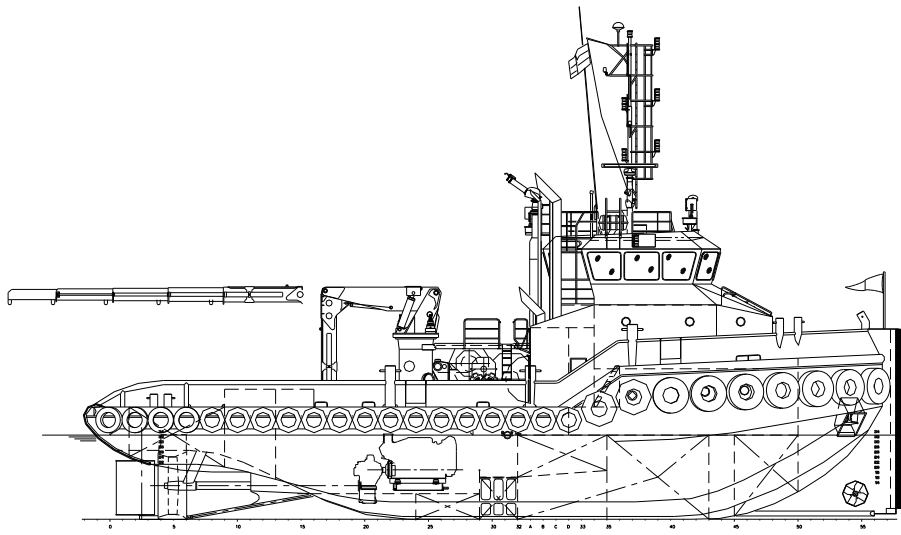
MAIN GENERATOR SETS	2x Caterpillar C4.4 TA
CAPACITY	2x 107.5 kVA, 50 Hz, 230/400V AC
HYDRAULIC	1x Caterpillar C18 TA-B
CAPACITY	357 kW @ 1800 rpm
TRANSFER PUMPS	For Fresh Water: VWSI 8020, 50 m ³ /h @ 4.8 bar For Fuel Oil: VWSI 8020, 50 m ³ /h @ 4.8 bar
FUEL OIL SEPARATOR	1x Westfalia, OTC-2
BILGE WATER SEP.	1x FACET CPS-2,5MKIII 0,5m ³ /hr.
SEWAGE TREAT. PLANT	1x Hamman Supermini cap. 12 persons
FRESH WATER MAKER	1x HEM 4,5m ³ /day @ 25° Sea water temperature
FIRE FIGHTING FIFI 1	Caterpillar C32 ACERT 970 kW @ 1800 rpm with
WITH WATER SPRAY PRE-WETTING	FFS self priming centrifugal pump capacity (approx.) 2800m ³ /hr
FIFI MONITOR	2x FFS electrical distance controlled Throw length 120m, Throw height 45m.

DECK LAY-OUT

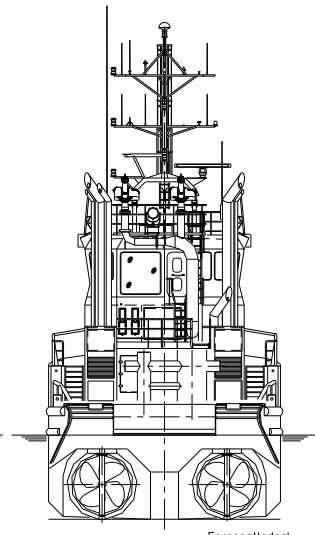
ANCHOR	2x 360 kg Pool (HHP)
CHAIN	19 mm stud-link anchor chain 220 m
ANCHOR WINCH	DMT, hydraulically driven AW200-H19K2
DECK CRANE	Heila HLRM 170-4SL, 7.9 ton(m) @ 15.93 m
TOWING WINCH	DMT, WATW-H1000KN
CAPACITY TOWING PART	50t (m) at 12m/min / 18t (m) at 24.2m/min Wire cap. 800 m, ø 44mm Holding force: 150 t (m)
CAPACITY ANCH. H. PART	100t (m) at 5.9m/min / 37t (m) at 12m/min Wire cap. 720m, ø 44mm Holding force: 150 t (m)
SPARE WIRE REEL	1x Dromec, E-driven, wire cap. 800 m, ø44mm
TUGGERWINCH	Dromec HPV-12000, 12 ton (m) @ 5-20 m/min
TOWINGS PINS	WK- Hydraulics Three in a row SWL 50 Ton
CHAIN STOPPER	WK- Hydraulics SWL 75 Ton

NAUTICAL AND COMMUNICATION EQUIPMENT GMDSS A3

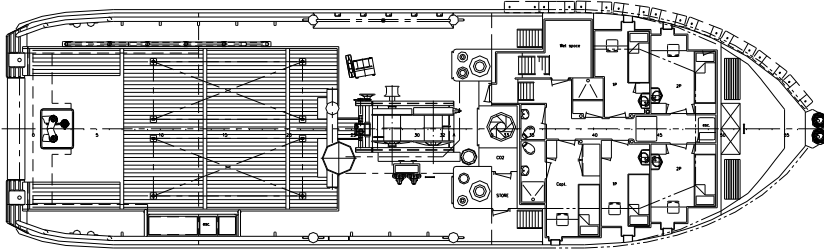
SEARCHLIGHTS	2x Pesch 2000W
MAGNETIC COMPASS	1x Cassens & Plat, Reflecta 1
SATELITE COMPASS	1x Furuno, or equal
WATCH ALARM	1x Marble 421
RADARS	2x Furuno, FAR-2117
GPS	1x Furuno, GP-150D
AIS	1x Furuno, FA-150
AUTOPILOT	1x Radio Zeeland, Seapilot 75
ECHOSOUNDER	1x Furuno, FE-700
SPEEDLOG	1x Furuno, DS-80
VHF RADIO TELEPHONE	2x Sailor, RT6222 2x DSC, 1x RT 6210
HANDHELD VHF	2x Jotron, TR20
NAVTEX	1x Furuno, NX-700
SSB	1x Furuno, FS-1570
INMARSAT-C	2x Sailor 6110
INTERCOM	1x Sigma 700
WIND INDICATOR	1x Obsermet OMC115
PC SYSTEM BRIDGE	1x PC system with two PC's and two Screens
TV SYSTEM (OSE)	1x V-SAT, or equal
INTERNET (OSE)	1x FFB250, or equal
ELECTRONIC CHART SYSTEM (OSE)	1x Transas Dual ECDIS, or equal



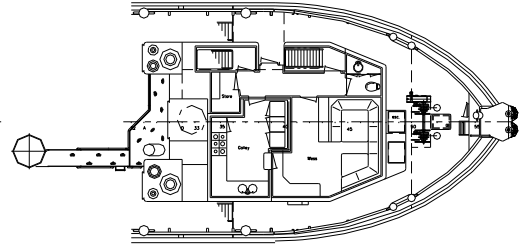
Maindeck



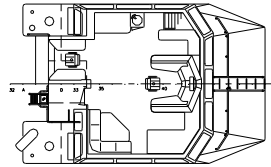
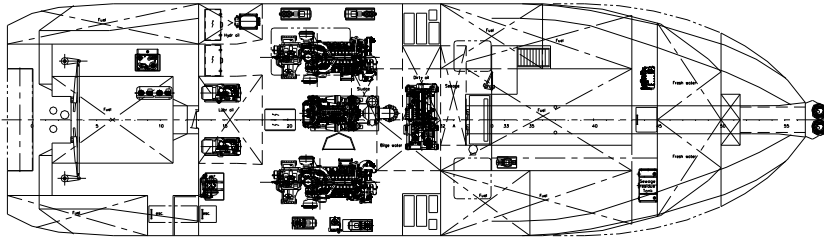
Forecastledeck



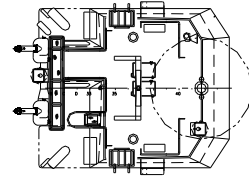
Below maindeck



Wheelhousedeck



Topdeck



PRINCIPLE CHARACTERISTICS

LENGTH oo	32.27	mtr.
LENGTH mid	31.86	mtr.
LENGTH topdeck	28.52	mtr.
BEAM mid	9.10	mtr.
DEPTH 1/2L	4.40	mtr.
DRAFT	3.30	mtr.

DAMEN SHOALBUSTER® 3209

"YN571717"

DAMEN

DAMEN SHIPYARDS HARDINXVELD

Member of the DAMEN SHIPYARDS GROUP



Rivierdijk 544
3371 EB Hardinxveld-Giessendam

P.O. Box 60
3370 AB Hardinxveld-Giessendam
The Netherlands

phone +31 (0)184 61 30 88
fax +31 (0)184 61 77 93

info@damen-hardinxveld.nl
www.damenshipyardshardinxveld.nl