

# DAMEN MULTI CAT<sup>®</sup> 3013

## "MCS ELLY II"

### GENERAL

YARD NUMBER	571691 (Damen Shipyards Hardinxveld)
BASIC FUNCTIONS	Anchor handling, dredger service, supply, towing, hose handling and survey
CLASSIFICATION	Bureau Veritas I *Tug Unrestricted navigation • MACH, AUT-UMS
NAT. AUTHORITIES	Dutch Shipping Inspectorate (IL&T): Unrestricted service
FLAG	UK
OWNER	Maritime Craft Services (Clyde) Ltd.

### DIMENSIONS

LENGTH O.A.	30.14	m
LENGTH MLD	28.00	m
BEAM MLD.	12.50	m
DEPTH AT SIDES (1/2 L)	3.80	m
DRAUGHT AFT (APPROX.)	± 2.60	m
GROSS TONNAGE	341	GT

### TANK CAPACITIES

FUEL OIL	208.5	m <sup>3</sup>
BLACK/GREY WATER	6.8	m <sup>3</sup>
FRESH WATER	53.5	m <sup>3</sup>
DIRTY OIL	4.4	m <sup>3</sup>
HYDR OIL	4.4	m <sup>3</sup>
LUB OIL	2.8	m <sup>3</sup>
BILGE WATER	2.8	m <sup>3</sup>
FRESH WATER (TRIM)	84.5	m <sup>3</sup>

### PERFORMANCES

BOLLARD PULL (AVERAGE)	37.8	ton(m)
SPEED	10.6	knots

### PROPULSION SYSTEM

MAIN ENGINES	3x Caterpillar C32 TTA
TOTAL POWER	2124 bkW (2888 bhp) at 1600 rpm
GEARBOXES	3x Reintjes WAF 562 5.947 : 1
PROPULSION	3x Promarin fixed pitch propellers in Optima nozzles, 1700 mm
BOWTHRUSTER	Hydraulically driven 184 kW (250 hp), Kalkman Beta 250H

### AUXILIARY EQUIPMENT

GENERATOR SETS	2x Caterpillar C 04.4, 107,5 kVA each
HYDRAULIC POWER	Caterpillar C32 TTA, 634 kW @1800 rpm
FUEL OIL SEPERATOR	Alfa Laval MIB 303

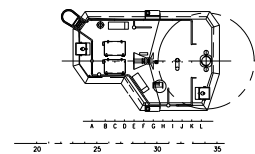
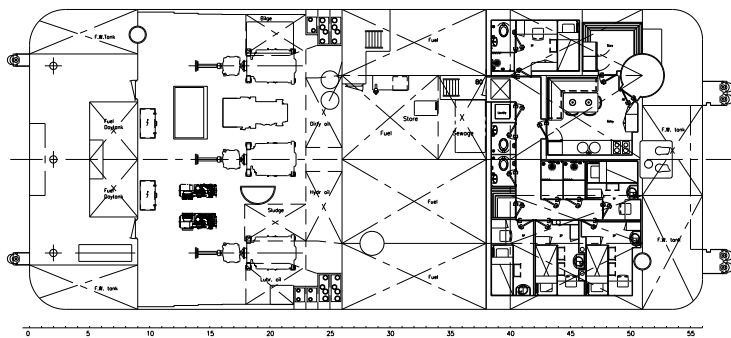
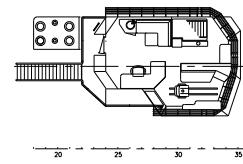
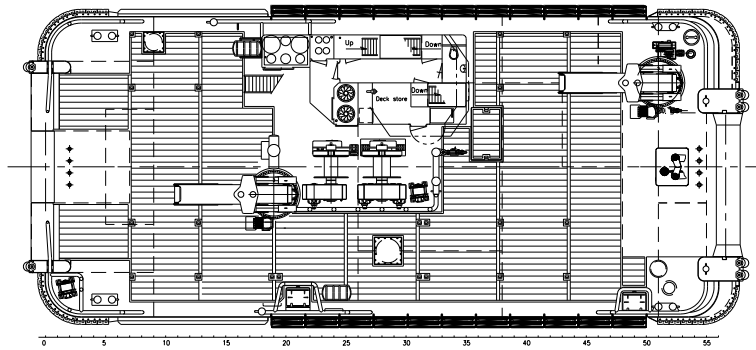
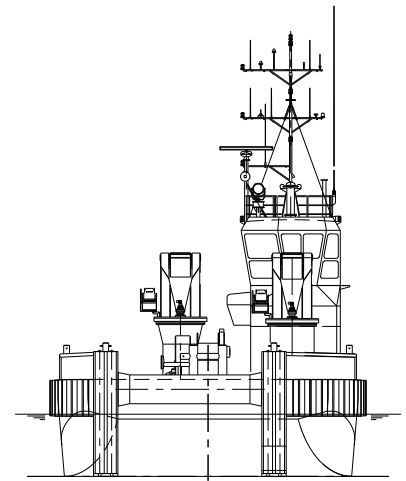
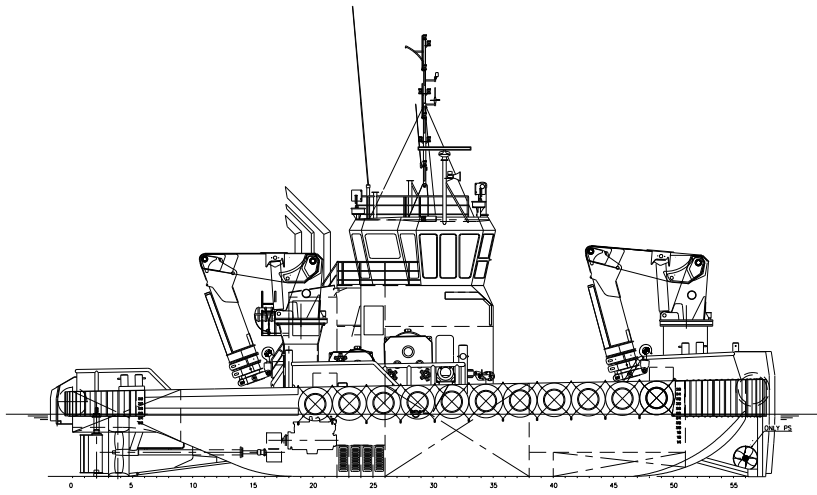
### DECK LAY-OUT

ANCHOR CHAIN	19 mm stud-link anchor chain 275 m
ANCHOR WINCH	Ridderinkhof, hydraulically driven
DECK CRANE FORE	1 x Heila HLRM340/18-3SK 33 ton(m) @ 9,4m; 13,5 ton(m) @ 18.50 m
DECKCRANE AFT	1 x Heila HLRM340/18-3SK 33 ton(m) @ 9,4m; 13,5 ton(m) @ 18.50 m
ANCHOR HANDLING WINCH CAPACITY	Kraaijeveld KA-30/2-H-TR 150 ton at 8 m/min pulling force (1 <sup>st</sup> layer) 30 ton at 32 m/min pulling force (1 <sup>st</sup> layer) 170 ton brake holding force (1 <sup>st</sup> layer) Wire cap: 950m Ø36mm or 200m Ø54mm
TOWING WINCH CAPACITY	Kraaijeveld KA-20-H-TR 40 ton at 12 m/min pulling force (1 <sup>st</sup> layer) 12 ton at 24 m/min pulling force (1 <sup>st</sup> layer) 100 ton brake holding force (1 <sup>st</sup> layer) Wire cap: 600m Ø36mm
PELICAN HOOKS	2x Mampaey 25 ton SWL
TUGGER WINCH	1x Dromec 12 ton at 4.0 m/min
TUGGER WINCH AFT	1x Dromec 12 ton at 4.0 m/min
TOWING PINS	Fore WK Hydraulics flipper with chain stopper Aft WK Hydraulics triple pin type

### NAUTICAL AND COMMUNICATION EQUIPMENT

SEARCH LIGHTS	2x Pesch 2000 W
RADAR SYSTEM	1x Furuno, FAR 2117; 1x Furuno, FR 8062
Ø 2ND RADAR SYSTEM	1x Furuno, FR 8062
COMPASS	1x Cassens & Plat, Reflecta 1
GYRO COMPASS	1x Anschutz standard 22 compact
ECHOSOUNDER	1x Furuno, FE-700
SPEEDLOG	1x Furuno, DS-80
GPS	1x Furuno, GP-150 D
Ø CHARTSYSTEM	1x Transas NS 4000
AUTOPILOT	1x Sea pilot 75
VHF	1x Sailor, RT6222
Ø VHF AFT CONTROL	1x Sailor, RT6222
HANDHELD VHF	2x TR-20
SSB	1x Furuno FS 1575
INMARSAT - C	2x Thrane & Thrane Sailor 6110
NAVTEX	1x Furuno, NX-700
Ø IRIDIUM TELEPHONE	1x Sailor, SC 4000A
GSM TELEPHONE	1x Sagem, RT 3000
AIS	1x Furuno, FA-150
WATCH ALARM	1x Marble, 421
INTERCOM	1x Sigma-700
Ø ENTERTAINMENT SYSTEM	1x Seatel, Coastal 24

Ø ARE OPTIONS



# DAMEN MULTI CAT<sup>®</sup> 3013

"YN 571691"

DAMEN SHIPYARDS HARDINXVELD

Member of the DAMEN SHIPYARDS GROUP



Rivierdijk 544  
3371 EB Hardinxveld-Giessendam

P.O. Box 60  
3370 AB Hardinxveld-Giessendam  
The Netherlands

phone +31 (0)184 61 30 88  
fax +31 (0)184 61 77 93

info@damen-hardinxveld.nl  
www.damenshipyardshardinxveld.nl