



DAMEN MULTI CAT[®] 2712

Green Isle "YN 571674"

GENERAL

YARD NUMBER	571674 / A15058 (Damen Shipyards Hardinxveld)
DELIVERY DATE	April 2015
BASIC FUNCTIONS	Anchor handling, dredger service, supply, towing, hose handling and survey
CLASSIFICATION	Bureau Veritas 1 * Hull • MACH Tug Unrestricted navigation, • AUT-UMS
NAT. AUTHORITIES	MCA CAT 1 Workboat code
FLAG	United Kingdom
OWNER	Green Marine

DIMENSIONS (APPROX.)

LENGTH O.A.	27.70	m
BEAM O.A.	12.45	m
LENGTH LOAD LINE	23.90	m
DEPTH AT SIDES	3.90	m
DRAUGHT (98%CONDITION)	± 2.85	m
DISPLACEMENT LIGHT SHIP	405	ton(m)
GROSS TONNAGE	299	GT
BRITISH TONNAGE	178,8	BT

TANK CAPACITIES (APPROX.)

FUEL OIL	109.5	m ³
FRESH WATER	31.4	m ³
DIRTY OIL	1.5	m ³
SEWAGE	10.5	m ³
SLUDGE	1.3	m ³
HYDR OIL	2.2	m ³
LUB OIL	1.7	m ³
BILGE WATER	4.0	m ³
FW TANKS	51.8	m ³

PERFORMANCES (TRIALS)

BOLLARD PULL (AVERAGE)	33.6	ton(m)
BOLLARD PULL (MAX.)	34.0	ton(m)
SPEED	10.3	knots

PROPULSION SYSTEM

MAIN ENGINES	2x Cat C32 TTA ACERT
TOTAL POWER	1790 kW at 1800 rpm
GEARBOXES	2x Reintjes WAF 572L 7,091 : 1
PROPULSION	2x fixed pitch propellers in Optima nozzles, 1900 mm
BOWTHRUSTER	Kalkman Beta 250H, 200pk / 184kW Hydraulic driven

AUXILIARY EQUIPMENT

GENERATOR SETS	2x Cat. C 04.4, 107 kVA each
HYDRAULIC POWER	Cat C12 TA, 339 kW 1800rpm
FUEL OIL SEPERATOR	Facet MV-11-AG

DECK LAY-OUT

ANCHOR	2x 300 kg Pool TW (HHP)
ANCHOR WINCH	1x HS Marine AKC290 LHE3 11,3T @ 16.5m
DECK CRANES	1x HS Marine AKC185 HE4 6,44T @ 17,07m
ANCHOR HANDLING WINCH	1x single drum
CAPACITIES	100 ton@ 2,5m/min pulling force 1 st layer 120 ton brake holding force 1 st layer
TOWING WINCH	1x single drum
CAPACITIES	50 ton@ 6.8m/min pulling force 1 st layer 90 ton brake holding force 1 st layer
TOWING PINS FRONT	1x WK double pin type with chain stopper
TOWING PINS AFT	1x WK triple pin type in line
TUGGER WINCH	1x Dromec HPV 12000, 15T pull, SB aft
TUGGER WINCH	2x Northsea Winch CWS110, 11T pull, PS aft en SB front

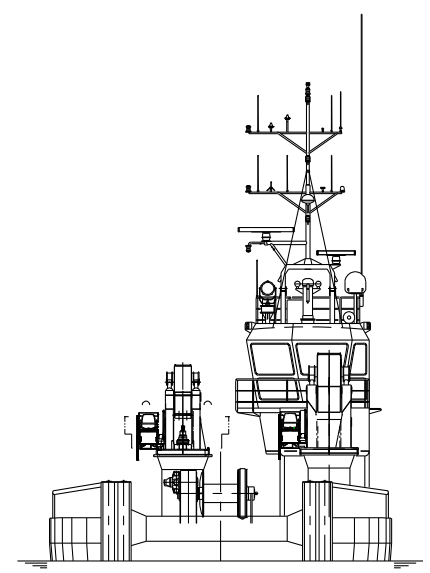
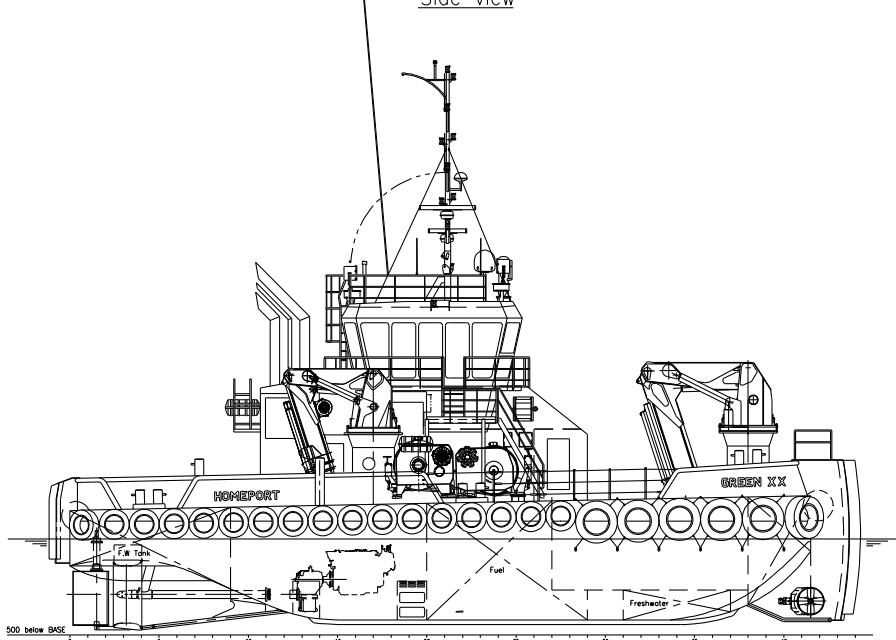
ACCOMMODATION

Comfortable heated and air-conditioned accommodation for 7 persons in 5 cabins, galley, sanitary facilities, etc. Two double cabins and three single cabins.

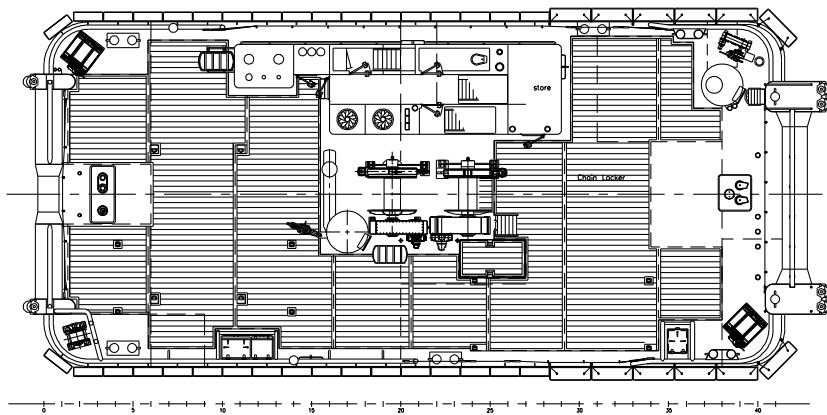
NAUTICAL AND COMMUNICATION EQUIPMENT GMDSS AREA 3

SEARCH LIGHTS	2x Pesch 2000 W
RADAR SYSTEM	1x Furuno, FAR 2117
RADAR SYSTEM	1x Furuno, FAR 8062
COMPASS	1x Cassens & Plat, Reflecta 1
GYRO COMPASS	1x Anshuetz, Standard 22
AUTOPILOT	1x Sea pilot 75
GPS	1x Furuno, GP-150 D
ECHOSOUNDER	1x Furuno, FE-700
SPEEDLOG	1x Furuno, DS-80
AIS	1x Furuno, FA-150
INTERCOM	Sigma-700
VHF	2x Sailor, RT6222, with DSC
HANDHELD VHF	3x TR-20
SSB	1x Furuno, FS-1570
INMARSAT - C	2x TT-3000E
NAVTEX	1x Furuno, NX-700
WATCH ALARM	1x Marble, 421
ENTERTAINMENT SYSTEM	1x Seatel ST 24
FLEET SYSTEM	1x Fleet broadband FBB150
WIND INDICATOR	1x Obsermet OMC 115
CHART PLOTTER	1x Transas NS 4000

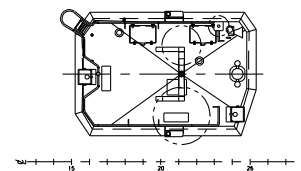
Side view



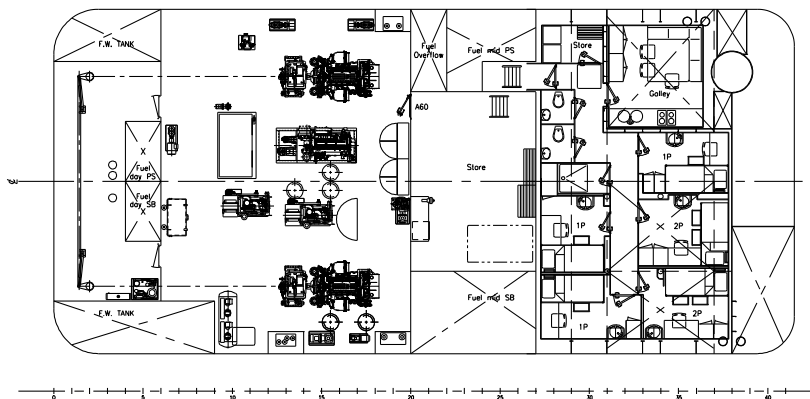
Main deck



Top deck

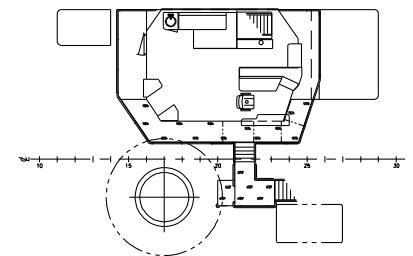


Below main deck



Wheelhouse deck

7550 above base



DAMEN MULTI CAT[®] 2712

"YN 571674"

DAMEN

DAMEN SHIPYARDS HARDINXVELD

Member of the DAMEN SHIPYARDS GROUP



Rivierdijk 544
3371 EB Hardinxveld-Giessendam

P.O. Box 60
3370 AB Hardinxveld-Giessendam
The Netherlands

phone +31 (0)184 61 30 88
fax +31 (0)184 61 77 93

info@damen-hardinxveld.nl
www.damenshipyardhardinxveld.nl