



DAMEN MULTI CAT[®] 2712

YN571726 / FORTH WARRIOR

GENERAL

YARD NUMBER	571726 (Damen Shipyards Hardinxveld)
DELIVERY DATE	June 2016
BASIC FUNCTIONS	Anchor handling, dredger service, supply, towing, hose handling and survey
CLASSIFICATION	Bureau Veritas I * Hull • MACH Tug Unrestricted navigation, • AUT-UMS, DYNAPOS AM/AT
NAT. AUTHORITIES	MCA CAT 1 Workboat code
FLAG	United Kingdom
OWNER	Briggs

DIMENSIONS (APPROX.)

LENGTH O.A.	27.70	m
BEAM O.A.	12.45	m
LENGTH LOAD LINE	23.90	m
DEPTH AT SIDES	3.90	m
DRAUGHT (98%CONDITION)	± 2.85	m
DISPLACEMENT LIGHT SHIP	405	ton(m)
GROSS TONNAGE	299	GT
BRITISH TONNAGE	178,8	BT

TANK CAPACITIES (APPROX.)

FUEL OIL	103.5	m ³
FRESH WATER	31.4	m ³
DIRTY OIL	1.5	m ³
SEWAGE	10.5	m ³
SLUDGE	1.3	m ³
HYDR OIL	2.2	m ³
LUB OIL	1.7	m ³
BILGE WATER	4.0	m ³
TW TANKS	16.5	m ³

PERFORMANCES (APPROX.)

BOLLARD PULL (AVERAGE)	32.0	ton(m)
SPEED	10.0	knots

PROPULSION SYSTEM

MAIN ENGINES	2x CAT C32 TTA ACERT
TOTAL POWER	1790 bkW at 1800 rpm
GEARBOXES	2x Reintjes WAF 572L 7,091 : 1
PROPULSION	2x fixed pitch propellers in DMC 19A nozzles, 1900 mm
BOWTHRUSTER	Veth VT-400, 530pk / 390kW @ 1500rpm Hydraulic driven

AUXILIARY EQUIPMENT

GENERATOR SETS	2x CAT C 04.4, 107 kVA 50Hz each
CAPACITY HARBOUR SET	1x CAT C 04.4 60.5 kVA, 50 Hz, 230/400V in sound enclosure
HYDRAULIC POWER	1x CAT C18 TA, 533 kW 1800rpm
FUEL OIL SEPERATOR	Westfalia OTC-2
F.O. CARGO TRANSFER	1x F.O. cargo pump 50m ³ /hr with hose reel and counter
F.W. CARGO TRANSFER	1x F.W. cargo pump 50m ³ /hr with hose reel and counter

DECK LAY-OUT

ANCHOR	2x 300 kg Pool TW (HHP)
ANCHOR WINCH	1x Hydraulically driven, Kraaijeveld
DECK CRANES	1x HS Marine AKC325 LHE3 12.45T @ 16.5m and 28.02T @ 8.28m, with personnel lifting 1T 1x HS Marine AKC185 HE4 18.74T @ 6.95m and 18.74T @ 6.95m
ANCHOR HANDLING WINCH CAPACITIES	1x single drum Kraaijeveld 80 ton@ 3m/min pulling force 1 st layer 120 ton brake holding force 1 st layer
TOWING WINCH CAPACITIES	1x single drum Kraaijeveld 50 ton@ 6.8m/min pulling force 1 st layer 90 ton brake holding force 1 st layer
TOWING PINS FRONT	1x Shark Jaws with Guiding pins, SWL100T
TOWING PINS AFT	1x WK triple pin type in line, BP 35T
FOUR POINT MOORING	4x 15T pull @ 25m/min & 100m/min pay-out wire capacity 300m Ø24mm Dromec HPA15000-0
TUGGER WINCH	1x Dromec HPV 12000, 12T pull, SB aft

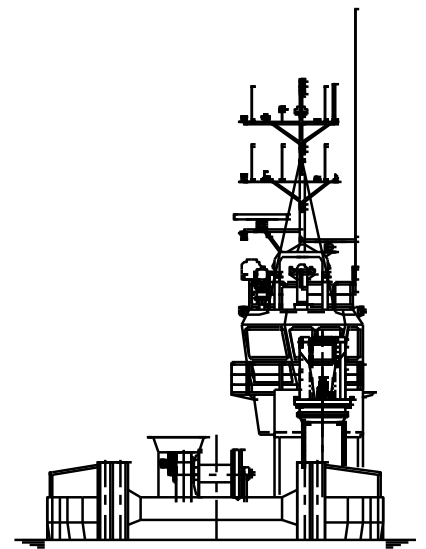
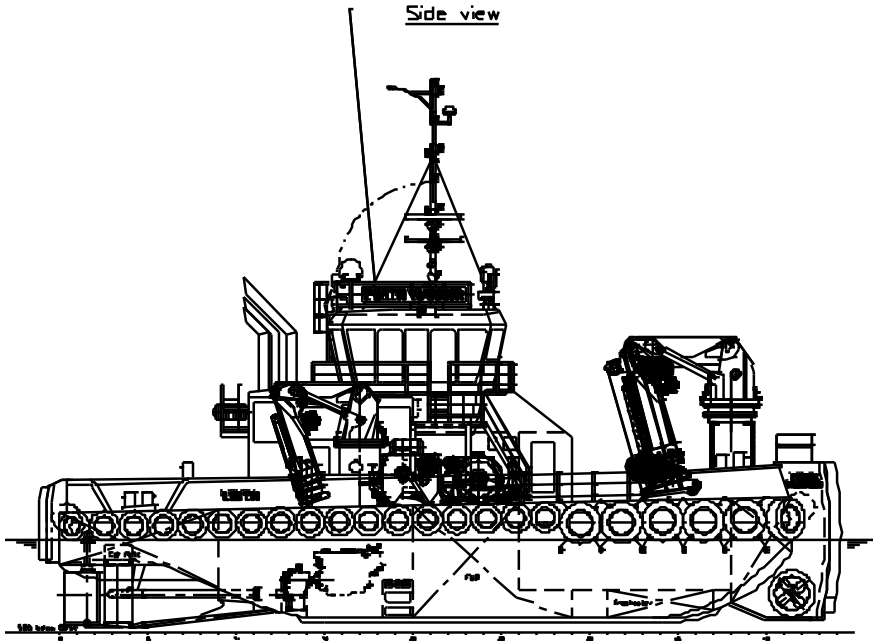
ACCOMMODATION

Comfortable heated and air-conditioned accommodation for 7 persons in 5 cabins, galley, sanitary facilities, etc. Two double cabins and three single cabins.

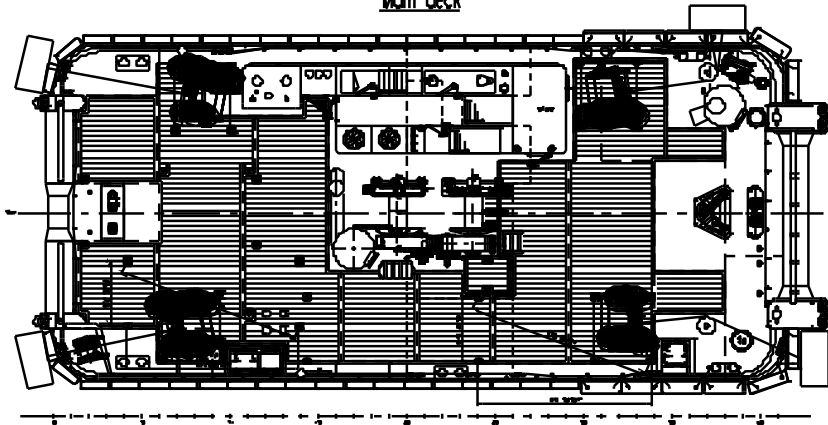
NAUTICAL AND COMMUNICATION EQUIPMENT GMDSS AREA 3

SEARCH LIGHTS	2x Pesch 2000 W
DP SYSTEM	1x Classified RH DPT4500
RADAR SYSTEM	2x Furuno, FAR 2117BB
COMPASS	1x Cassens & Plat, Reflecta 1
GYRO COMPASS	2x Anshuetz, Standard 22
AUTOPILOT	1x Integrated into DP system
DGPS	1x Simrad MX610
ECHOSOUNDER	1x WASSP WMB 3230 MultiBeam sonar
ECHOSOUNDER	1x Furuno, FE-800
SPEEDLOG	1x Furuno, DS-80
AIS	1x Furuno, FA-150
INTERCOM	1x Phonetech CIS3101
VHF	2x Sailor, RT6222, with DSC
HANDHELD VHF	2x TR-20
SSB	1x Sailor 6310
INMARSAT - C	2x Sailor 6110
NAVTEX	1x Furuno, NX-700
WATCH ALARM	1x Furuno BR500
ENTERTAINMENT SYSTEM	1x Seatel ST 25
FLEET SYSTEM	1x Fleetbroadband 250
WIND INDICATOR	2x Obsermet OMC 116
CHART PLOTTER	1x Transas NS 4000, with 1 folio

Side view

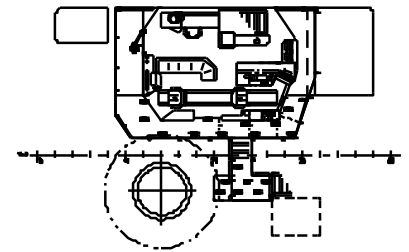


Main deck

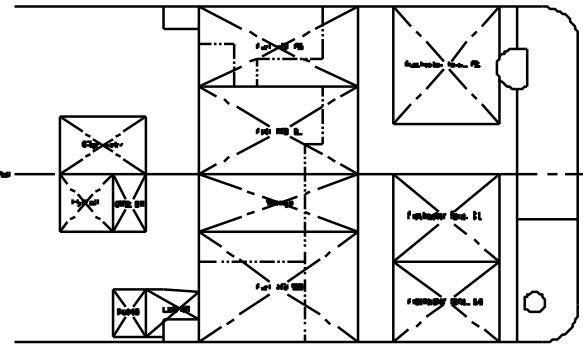
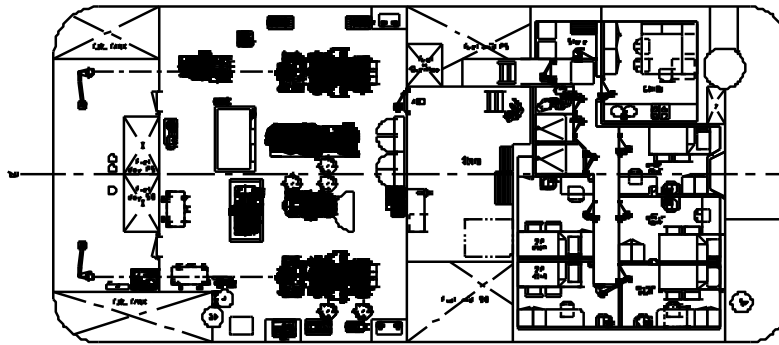


Wheelhouse deck

7500 above base



Below tanktop



DAMEN MULTI CAT[®] 2712

YN571726 / FORTH WARRIOR

DAMEN

DAMEN SHIPYARDS HARDINXVELD

Member of the DAMEN SHIPYARDS GROUP



Rivierdijk 544
3371 EB Hardinxveld-Giessendam

P.O. Box 60
3370 AB Hardinxveld-Giessendam
The Netherlands

phone +31 (0)184 61 30 88
fax +31 (0)184 61 77 93

info@damen-hardinxveld.com
www.damenshipyardhardinxveld.nl