



DAMEN STAN TUG® 2208 "SATO"

GENERAL

| | |
|-----------------|--|
| YARD NUMBER | 509649 |
| BASIC FUNCTIONS | Towing, mooring and fire fighting |
| CLASSIFICATION | Bureau Veritas I ✕ Hull • MACH Tug Unrestricted Navigation Incl. tonnage and loadline certificates |
| OWNER | Tanzania Ports Authority |
| COUNTRY | Tanzania |

BUILDING YARD

| | |
|---------|---------------------------|
| NAME | Damen Shipyards Cape Town |
| COUNTRY | South Africa |

DIMENSIONS

| | |
|----------------|---------|
| LENGTH O.A. | 22.64 m |
| BEAM O.A. | 7.84 m |
| DEPTH AT SIDES | 3.74 m |
| DRAUGHT AFT | 3.50 m |
| DISPLACEMENT | 275 ton |

TANK CAPACITIES

| | |
|-----------------|---------------------|
| FUEL OIL | 36.7 m ³ |
| FRESH WATER | 8.6 m ³ |
| FOAM | 3.4 m ³ |
| LUBRICATION OIL | 2.9 m ³ |
| DIRTY OIL | 1.6 m ³ |
| BILGE WATER | 2.6 m ³ |
| WATERBALLAST | 13.4 m ³ |

PERFORMANCES

| | |
|--------------|-------------|
| BOLLARD PULL | 37.4 ton(m) |
| SPEED | 11.7 knots |

PROPULSION SYSTEM

| | |
|--------------|-------------------------------------|
| MAIN ENGINES | 2x Caterpillar 3512B TA / B |
| TOTAL POWER | 2028 bkW (2720 bhp) at 1600 rpm |
| GEARBOXES | 2x Reintjes WAF 665L / 5.95 : 1 |
| PROPELLERS | 2x Kaplan II fixed pitch propellers |
| NOZZLES | 2x 2200 mm Van de Giessen |

AUXILIARY EQUIPMENT

| | |
|----------------|---|
| GENERATOR SETS | 2x Cat C 4.4 T, 230/400 V, 64.5 kVA, 50 Hz |
| BILGE PUMPS | 2x Sterling SIHI AKHA 5101 each 20 m ³ /hr |
| FUEL OIL PUMPS | 2x Sterling SIHI AOHA 3101 each 4.5 m ³ /hr |
| COOLING SYSTEM | Closed cooling system |
| FIFI SET | Separate diesel driven pump of 600 m ³ /hr at 10 bar |
| FIFI MONITORS | 2x water/foam of 300 m ³ /hr each |

DECK LAY-OUT

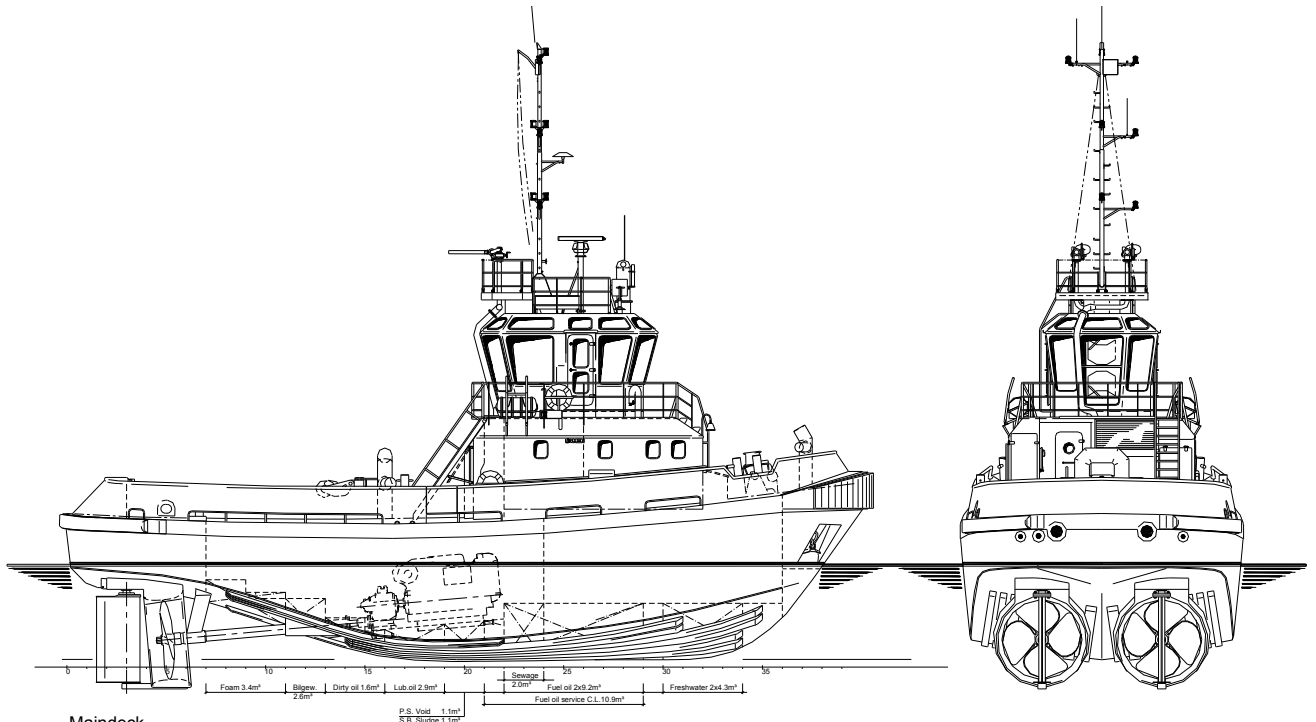
| | |
|--------------|--|
| ANCHORS | 2x 225 kg Pool (High Holding Power) |
| CHAIN | 247.5 m, chain 16 mm (stud link) |
| ANCHOR WINCH | Electric, 10 m/min, incl. warping head |
| CAPSTAN | Electric, 3 ton at 15 m/min. |
| TOWING HOOK | Mampaey, 45 ton |
| FENDERING | Rubber bow and stern fenders |

ACCOMMODATION

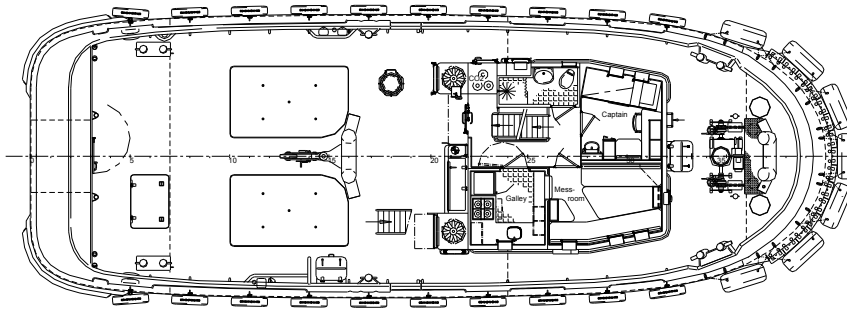
Accommodation for 8 persons, completely insulated and finished with durable modern linings, acoustical Dampa ceiling in the wheelhouse and floating floors. Air-conditioned and heated accommodation, with 5 cabins, galley, mess/dayroom and sanitary facilities.

NAUTICAL AND COMMUNICATION EQUIPMENT

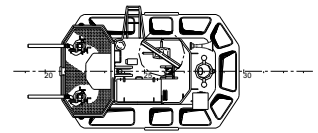
| | |
|--------------|-----------------------|
| SEARCHLIGHT | Pesch 1000 W |
| RADAR SYSTEM | Furuno FR-8062 |
| COMPASS | Magnetic, Kotter type |
| AUTOPILOT | Simrad AP-50 |
| GPS | Furuno GP-150 |
| ECHOSOUNDER | Furuno LS-6100 |
| VHF | Sailor RT5022, 25 W |
| SSB | Furuno FS-1570 |
| NAVTEX | Furuno NX-700 |
| AIS | Furuno FA-150 |



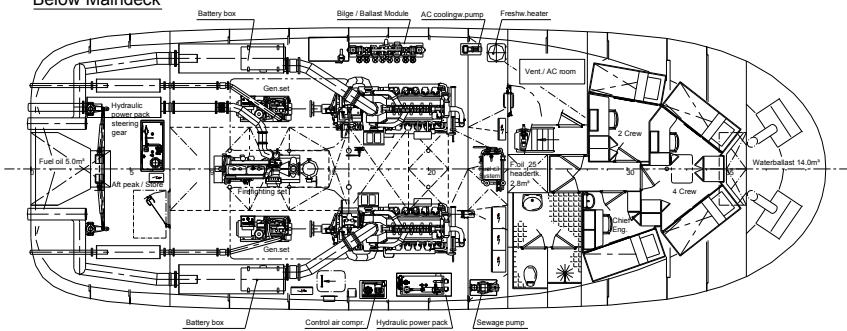
Maindeck



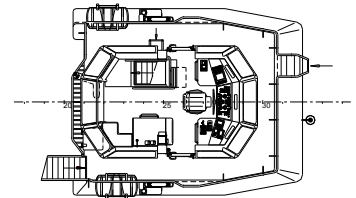
Topdeck



Below Maindeck



Bridgedeck



DAMEN STAN TUG[®] 2208

"SATO"



DAMEN SHIPYARDS GORINCHEM

Member of the DAMEN SHIPYARDS GROUP



Industrieterrein Avelingen West 20
4202 MS Gorinchem

P.O. Box 1
4200 AA Gorinchem

The Netherlands

phone +31 (0)183 63 99 11
fax +31 (0)183 63 21 89

info@damen.nl
www.damen.nl