



## DAMEN STAN TUG® 1606 "RHUMB MATILDA"

### GENERAL

YARD NUMBER	503164
DELIVERY DATE	March 2012
BASIC FUNCTIONS	Towing, mooring, pushing
CLASSIFICATION	Bureau Veritas 1 ✕ Hull • MACH TUG Coastal Area incl. tonnage certificate
FLAG	Australia
SAILING AREA	NSCV code 2C, restricted offshore operations
OWNER	Rhumb Maritime Pty Ltd, Australia

### DIMENSIONS

LENGTH O.A.	16.76 m
BEAM O.A.	5.94 m
DEPTH AT SIDES	2.54 m
DRAUGHT AFT	2.25 m
DISPLACEMENT	94 ton (approx.)

### TANK CAPACITIES

FUEL OIL	14.2 m <sup>3</sup>
FRESH WATER	1.1 m <sup>3</sup>
SEWAGE	0.7 m <sup>3</sup>
BILGE WATER/SLUDGE	0.5 m <sup>3</sup>

### PERFORMANCES

BOLLARD PULL AHEAD	16.8 ton(m)
SPEED	11.1 knots

### PROPULSION SYSTEM

MAIN ENGINES	2x Caterpillar C18 TA / B
TOTAL POWER	894 bkW (1200 bhp) at 1800 rpm
GEARBOXES	2x Reintjes WAF 264L 4.5:1
PROPELLERS	2x Kaplan II fixed pitch propellers
NOZZLES	2x 1350 mm Van de Giessen "Optima" with st.st. innerrings
RUDDERS	2x streamlined, double plates
STEERING GEAR	Powered hydraulic 2x 45°, with rudder indicator

### AUXILIARY EQUIPMENT

GENERATOR SET	Caterpillar C2.2 NA, 230/400 V, 20.3 kVA, 50 Hz
ALTERNATOR 24 V	2x main engine driven
BATTERY SETS	2x 24 V 200 Ah (with change over), 2 x 24 V, 125 Ah
ALARM SYSTEM	Engines, gearboxes, bilge alarm, fire detection E.R.
BILGE/GS PUMP	Elec. driven, Sterling SIHI WWSI 5013, 15 m <sup>3</sup> /hr
FUEL OIL SYSTEM	Duplex filters, water separators + SOS valve
FUEL OIL TRANSFER SYSTEM	Sterling R35/40 with deck connection + hoses
COOLING SYSTEM	Closed cooling system
WATER SYSTEM	Electr.driven freshwater hydrophore 24V
FRESH WATER HEATER	230 V, 30 liter
VENTILATION	Mechanical ventilation in E.R. 10.500 m <sup>3</sup> /hr

### DECK LAY-OUT

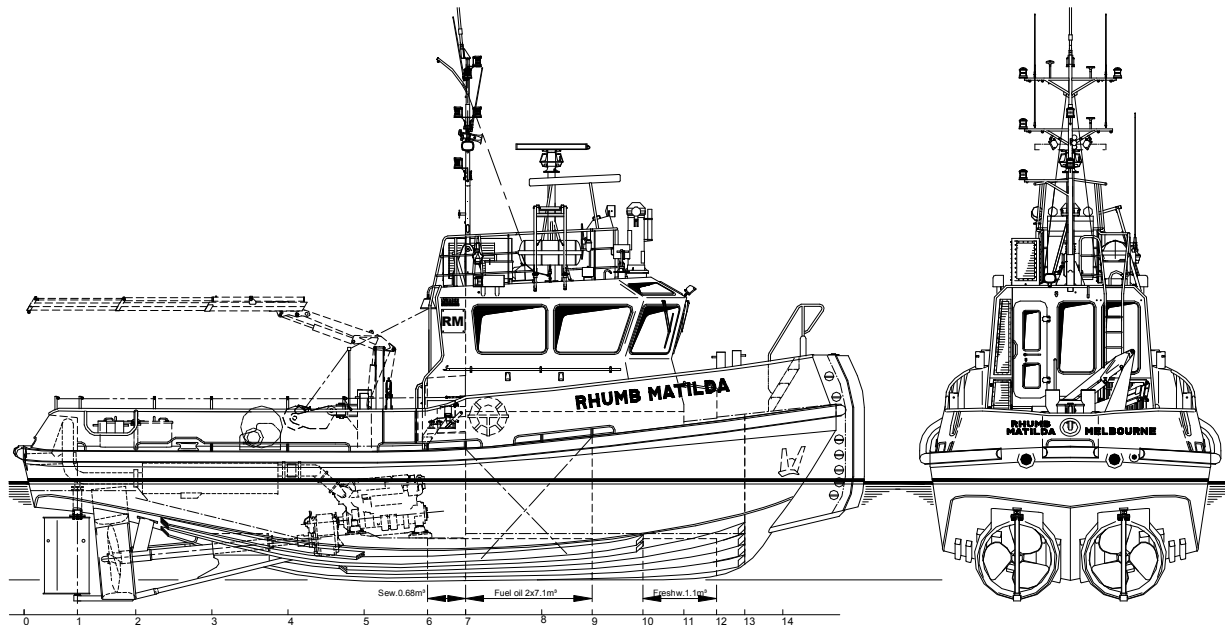
ANCHORS	2x 80 kg Pool (HHP)
CHAIN (TOT.)	100 m shortlink chain 13 mm diameter
ANCHOR WINCH	Electrical for one anchor
CRANE	Heila HLM 3-2S, capacity 0.5 ton at 6.9 meter
CAPSTAN	1.3 ton at 9 m/min
COUPL. WINCHES /BOLLARDS	2 x manually operated 25 ton each
SECOND CONTROL STAND	Flying bridge on topdeck
TOWING HOOK	Mampaey disc type, SWL 250 kN/ 25 ton
PUSH BOW	Cylindrical rubber fender Ø 380 mm
LIFERAFT	On top deck
FENDERING	Continuous rubber D-fender around hull 200x200mm

### ACCOMMODATION

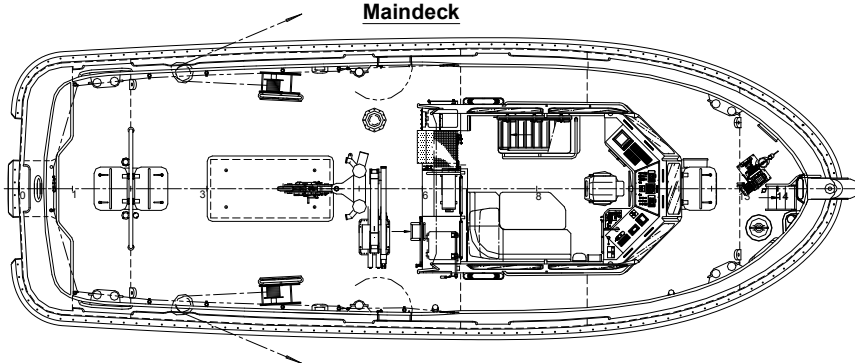
The accommodation is completely insulated and finished with durable modern livings, acoustical ceiling in the wheelhouse and a floating floor. The air-conditioned wheelhouse is fitted with a corner settee with table and a control position. Below deck a crew cabin for 4 persons, galley, sanitary facilities and a store are provided. Windows are fitted in aluminium frames.

### NAUTICAL AND COMMUNICATION EQUIPMENT

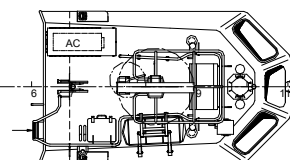
SEARCHLIGHT	Pesch 250 W + floodlight 150 W
HORN	Electric
RADAR	Furuno FR-8062
COMPASS	Magnetic Kotter type
GPS	Furuno GP-32 with repeater on flybridge
GPS PLOTTER	Furuno GP-1650
AUTOPILOT	Simrad AP50
ECHOSOUNDER	Furuno LS-6100
VHF RADIO	1xSailor RT2048 + 1xSailor 6222 with DSC and with repeater on flybridge
SSB RADIO	Sailor 6310 with repeater on flybridge
AIS	Furuno FA-150



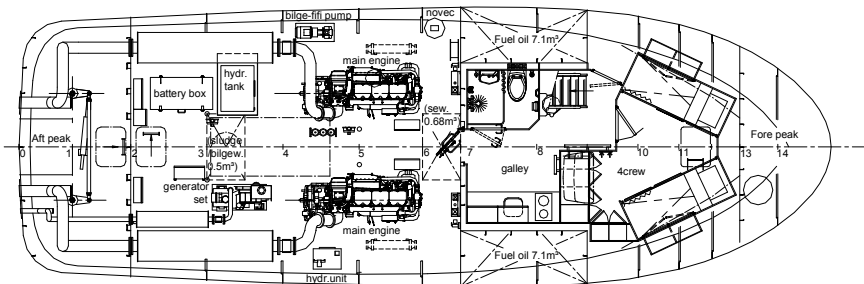
Maindeck



Topdeck



Below Maindeck



# DAMEN STAN TUG<sup>®</sup> 1606

"RHUMB MATILDA"

**DAMEN**

DAMEN SHIPYARDS GORINCHEM

Member of the DAMEN SHIPYARDS GROUP



Industrieterrein Avelingen West 20  
4202 MS Gorinchem

P.O. Box 1  
4200 AA Gorinchem  
The Netherlands

phone +31 (0)183 63 99 11  
fax +31 (0)183 63 21 89

info@damen.nl  
www.damen.nl