



AZIMUTH STERN DRIVE TUG 2009

STOCK

PICTURE OF SIMILAR VESSEL

GENERAL

Yard number	512408
Basic functions	Towing, mooring and fire-fighting operations
Classification	Bureau Veritas I * HULL • MACH Tug Coastal Service AUT UMS

DIMENSIONS

Length overall	21.19 m
Beam overall	9.43 m
Depth at sides	4.00 m
Draught aft	3.80 m
Displacement	251 t

TANK CAPACITIES

Fuel oil	21.3 m ³
Fresh water	7.8 m ³
Sewage	1.6 m ³
Bilge water	1.3 m ³
Lubrication oil	1.0 m ³
Dirty oil	1.0 m ³
Rudder propeller oil	1.3 m ³
Foam	3.8 m ³

PERFORMANCES

Bollard pull ahead	28.1 t
Bollard pull astern	26.7 t
Speed ahead	11.5 kn
Speed astern	11.3 kn

PROPULSION SYSTEM

Main engines	2x Caterpillar C32 TTA ACERT/B
Total power	1790 bkW (2400 bhp) at 1800 rpm
Azimuth thrusters	Schottel SRP 550
Propeller diameter	1750 mm
Forced ventilation	24.000 m ³ /h

AUXILIARY EQUIPMENT

Generator sets	2x Caterpillar C4.4 T, 64.5 kVA, 230/400 V, 50 Hz
Bilge pumps	2x Sterling SIHI AKHA 5101 20 m ³ /h
Fuel pump	Sterling SIHI AOHHA 3101 4.5 m ³ /h
Cooling system	Box cooling
Fresh water pressure set	Sterling AOHHA 1202
Hydraulic system	Double main engine driven pumps
Fifi set	Cat C-09 Acert 600 m ³ /h, 10 bar
Fifi monitor	600 m ³ /h water/foam

DECK LAY-OUT

Anchor	2x 225 kg Pool (High Holding Power)
Anchor/towing winch	Hydraulically driven, pull 10 ton at 30 m/min, 75 ton brake
Towing hook	Mampaey, disc type, SWL 450 kN
Crane + winch	Heila HLM 10-3S 0.8 ton at 10.36 m + Heila MW 14 1100 kg
Capstan	Electric 3 ton at 15 m/min

ACCOMMODATION

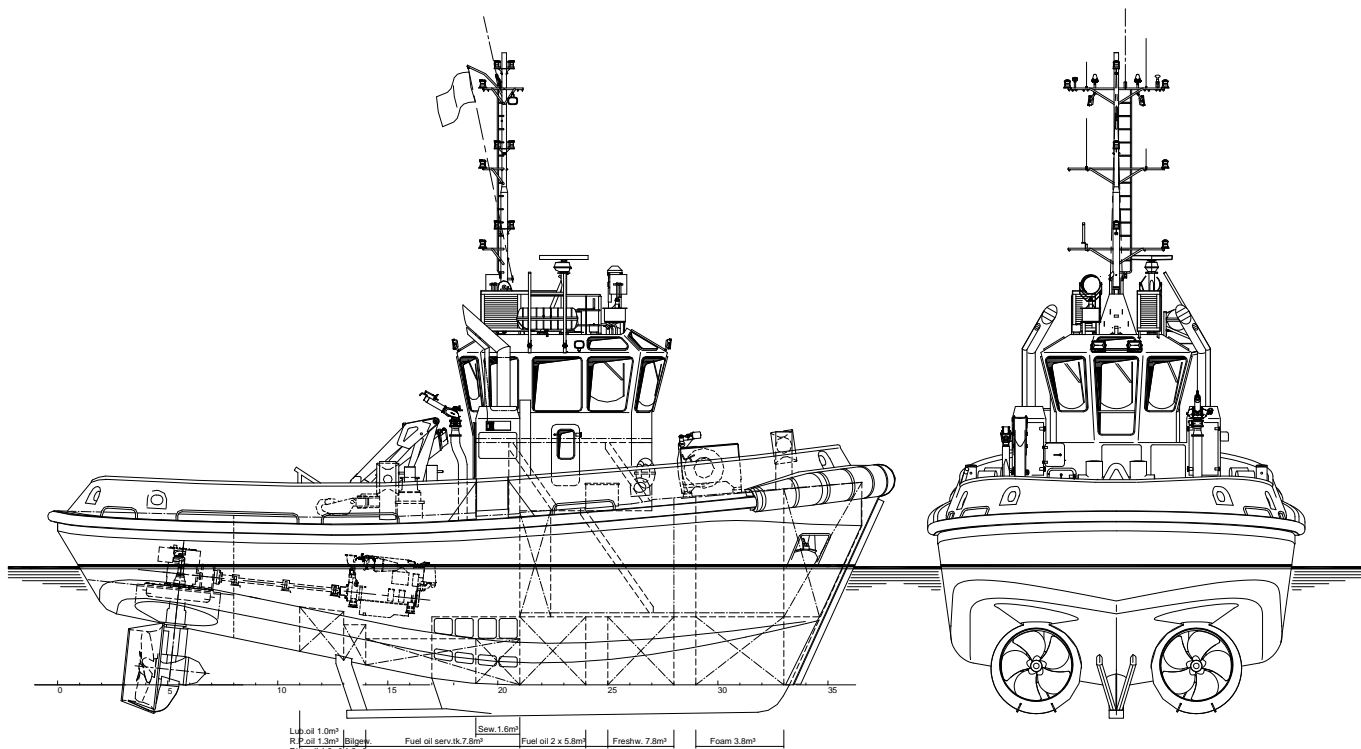
For 5 persons, completely insulated and finished with durable modern linings, acoustical ceiling in the wheelhouse, floating floors and air-conditioned. With a captain's cabin, two crew cabins, galley, mess/dayroom and sanitary facilities.

NAUTICAL AND COMMUNICATION EQUIPMENT

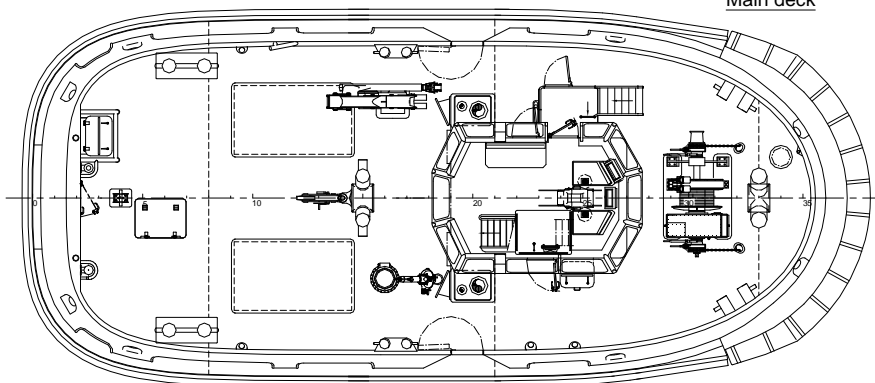
Searchlight	Pesch 1000 W
Radar system	Furuno FAR 2117
Magnetic compass	Cassens & Plath Kotter
Autopilot	Simrad AP-50
GPS	Furuno GP-150
Echosounder	Furuno LS-6100
VHF	2x Sailor Compact 6222 (one with DSC)
VHF hand-held	2x Jotron TR-20, GMDSS approved
SSB	Furuno FS-1575
Navtex	Furuno NX-700
AIS	Furuno FA-150
EPIRB	Jotron Tron-40S
Sart	Jotron Tron Sart
Anemometer	Windsonic OMC 115

AZIMUTH STERN DRIVE TUG 2009

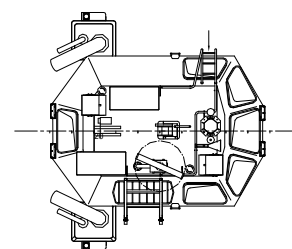
STOCK



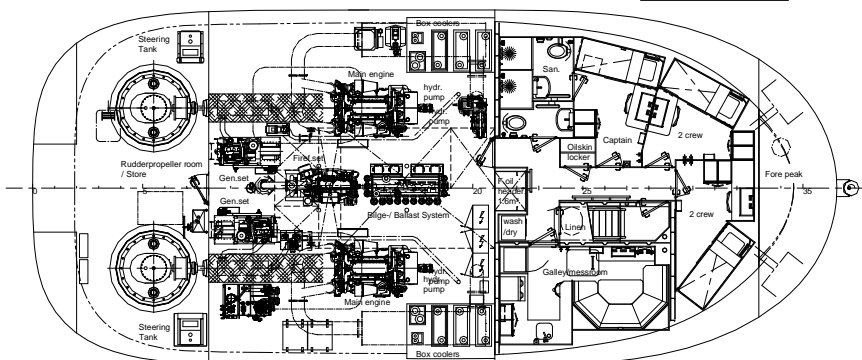
Main deck



Top deck



Below Main deck



DAMEN

DAMEN SHIPYARDS GROUP

Avelingen-West 20
4202 MS Gorinchem
The Netherlands

P.O. Box 1
4200 AA Gorinchem
The Netherlands

phone +31 (0)183 63 99 22
fax +31 (0)183 63 21 89

info@damen.com
www.damen.com

© No part of the leaflet may be reproduced in any form, by print, photo print, microfilm, or any other means, without written permission from Damen Shipyards Group